



1982

## Jimmie E. Nunnery Family Papers - Accession 404

Jimmie E. Nunnery

Follow this and additional works at: [https://digitalcommons.winthrop.edu/manuscriptcollection\\_findingaids](https://digitalcommons.winthrop.edu/manuscriptcollection_findingaids)

---

### Finding Aid Citation

Louise Pettus Archives and Special Collections, Winthrop University, "Jimmie E. Nunnery Family Papers - Accession 404". Finding Aid 86.

[https://digitalcommons.winthrop.edu/manuscriptcollection\\_findingaids/86](https://digitalcommons.winthrop.edu/manuscriptcollection_findingaids/86)

This Finding Aid is brought to you for free and open access by the Louise Pettus Archives and Special Collections at Digital Commons @ Winthrop University. It has been accepted for inclusion in Manuscript Collection by an authorized administrator of Digital Commons @ Winthrop University. For more information, please contact [digitalcommons@winthrop.edu](mailto:digitalcommons@winthrop.edu).



**WINTHROP UNIVERSITY  
LOUISE PETTUS ARCHIVES & SPECIAL COLLECTIONS**

**MANUSCRIPT COLLECTION**

**ACCESSION 404**

**JIMMIE E. NUNNERY FAMILY PAPERS**

1815-1981

15 Boxes, 37 Folders, &  
45 Bound Volumes

**WINTHROP UNIVERSITY  
LOUISE PETTUS ARCHIVES & SPECIAL COLLECTIONS**

**MANUSCRIPT COLLECTION**

ACC. NO.: **404**  
ADDITIONS: \_\_\_\_\_, \_\_\_\_\_, \_\_\_\_\_

PROCESSED BY: Gina L. Price, Drew Russell  
DATE: February 1, 1982 & March 8, 2019  
NO. OF SECTIONS: 2

**JIMMIE E. NUNNERY FAMILY PAPERS**

**I**

The Jimmie E. Nunnery Family papers were deposited with the Archives on June 9, 1981 by Mr. and Mrs. Jimmie E. Nunnery.

Linear feet of shelf space occupied: 4.0  
Approximate number of pieces: 7,600

Restrictions: Open to researchers under the rules and regulations of the Louise Pettus Archives & Special Collections at Winthrop University.

Literary Rights: For information concerning literary rights please contact the Louise Pettus Archives & Special Collections at Winthrop University.

Notices were released to NUCMC on February 15, 1982. (For additional notices see the collection control file).

Scope and Content: **The collection consists of personal correspondence, legal papers, financial papers, compositions of Iva Jordan Nunnery, genealogical papers, historical sketches of Landsford Canal, of General W.R. Davie and of Fort Lawn, papers relating to South Carolina Volunteers of the Confederate Army and Revolutionary soldiers, newspaper clippings, photographs and various papers relating to members of the Nunnery family of Chester County. See also Acc. 301, Melvin Ernest Nunnery Papers, and Acc. 342, Joseph Nunnery Family Papers.**

Transfer of Items: One item transferred from this collection to Miscellany Collection. Accession 1646 M805 (862) - Poet Laureate of South Carolina

II

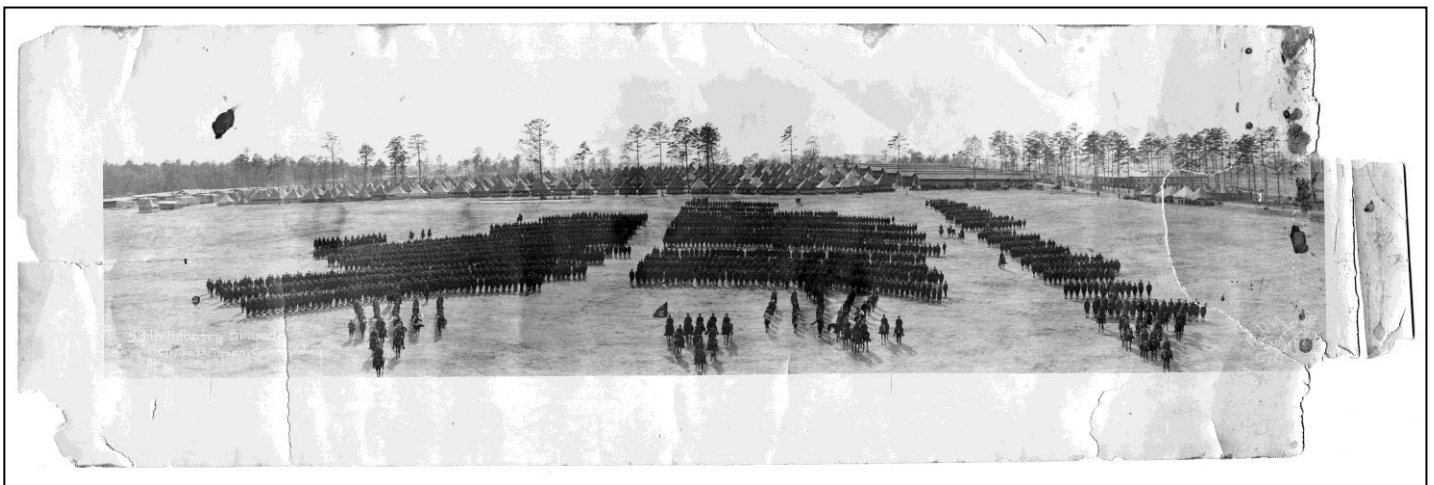
DESCRIPTION OF SERIES

<u>Box(es)</u>	<u>Folder(s)</u>	<u>Series</u>	<u>Year(s)</u>
1-2	1-6	PERSONAL CORRESPONDENCE Consists of letters, cards (Christmas, Easter, birthday, and sympathy), invitations and telegrams of various members of the Nunnery Family. In chronological order.	1881-1968, nd
3	7	LEGAL PAPERS Consists of deeds, mortgages and insurance policies. The deeds mainly concern the Nunnery family except for one between Thomas Porter and Frederick Holcomb. The mortgages and insurance policies concern the Nunnery and Jordan families. In chronological order.	1828-1949, nd
3-6 2 Bd. Vols.	8-16	FINANCIAL PAPERS Consists of ledgers, bills, statements, receipts and diary records. The ledgers are accounts of Ferguson's store. One ledger contains the minutes of the Wylie's Mill Debating Society from October 11, 1899 to March 3, 1903. The bills, statements and receipts concern the Nunnery and Jordan families. The dairy records are of Melvin A. Nunnery's dairy in Chester County. In chronological order.	1815-1968, nd
7	17	PAPERS RELATING TO IVA JORDAN NUNNERY Consists of compositions written by Iva Jordan Nunnery, reports on church Community Missions and other papers relating to her church work. In chronological order.	1908-1964, nd
7	18	GENEALOGICAL PAPERS Consists of genealogical information on the Rives, White, Jordan and Culp (Kolb) families. In alphabetical order by family and thereunder in chronological order.	1878-1928, nd
7	18	HISTORICAL SKETCHES Consists of an account of the history of the old State Canal or Landsford Canal, a land plat of the area around Landsford Canal, a partial history of the town of Fort Lawn and an account of General William Richardson Davie's later life after he moved to South Carolina. For more information on Gen. Davie see the <i>Encyclopedia of the American Revolution</i> by Mark May Boatner III, call number Ref. E 208 .B68 1974. In chronological order.	1929, nd

II

DESCRIPTION OF SERIES (cont.)

<u>Box(es)</u>	<u>Folder(s)</u>	<u>Series</u>	<u>Year(s)</u>
7	18	PAPERS RELATING TO SOUTH CAROLINA VOLUNTEERS Consists of a list of Company H 24 South Carolina Volunteers during Civil War, a list of Confederate soldiers buried at Harmony Grove Baptist Church in Edgmoor and some statements concerning payment for service done in the Revolutionary War for Samuel Ferguson, Benjamin Culp, George Neeley and Andrew Lockhart. No arrangement.	1911, nd
7	18	NEWSPAPER CLIPPINGS Consists of clippings relating to the Nunnery family and families connected with them as well as to the local community (Chester County). In chronological order.	1892-1970, nd
7	19	PHOTOGRAPHS Consists of photographs of Winthrop University (ca1905), the 59 <sup>th</sup> Infantry Brigade of World War I commanded by General L.D. Tyson ca. 1917 (oversize and placed in Panoramic Print Box 1, Item 11) ( <i>use digital surrogate in lieu of original</i> ) and photocopy of photographs of John E. Nunnery, William J. Nunnery, Dorothy Nunnery Hicklin and Hall F. (Pete) Nunnery when they were children. Also included is a photocopy of a photograph of Joseph Nunnery, a first Lieutenant in the Confederate House of Representatives. No arrangement.	ca. 1917, 1981, nd



II

DESCRIPTION OF SERIES (cont.)

<u>Box(es)</u>	<u>Folder(s)</u>	<u>Series</u>	<u>Year(s)</u>
7	19	MISCELLANEOUS PAPERS Consists of various publications, advertisements, memorial records, papers concerning the Southern Baptist Church, prayers and poems. In chronological order.	1932-1963, nd
8	20	PERSONAL CORRESPONDENCE Letters, invitations, and telegrams. In chronological order.	1972-1975, nd
8	21	BUSINESS CORRESPONDENCE Business letters giving congratulations on the election. In chronological order.	1971-1982, nd
8	22	PAPERS RELATING TO CHESTER COUNTY, SC Contains an Auditor's Report, and Economic Development Problems Report, and the Constitution of South Carolina. In chronological order.	1904-1973
9	23	PAPERS RELATING TO NUNNERY'S 1972 CAMPAIGN Contains Buttons, Nunnery's schedule and a "Nunnery for Congress" sticker. In chronological order.	1972
9	24	VARIOUS PAPERS CONCERNING THE 1972 PRESIDENTIAL CAMPAIGN OF EDMUND MUSKIE Contains Muskie's proposes, a letter to Ernie to support Muskie's Election, Muskie's Tax Reform, and Muskie's Perspectives on America. In chronological order.	1971-1972, nd
9	25	VARIOUS CAMPAIGN MATERIAL Contains an announcement statement of Eugene Zeigler, a letter supporting Terry Sanford's election, a letter supporting the Wallace Campaign, McGovern's pamphlet, John Gaston, Jr.'s pamphlet, Mike Gravel's pamphlet, Campaign buttons for Stanley Arnold, and McGovern. In chronological order.	1972, nd
9	26	VARIOUS PAPERS CONCERNING THE 1972 & 1982 GENERAL ELECTION Contains a 1974 and 1982 Sample Ballot. In chronological order.	1972, 1982, nd
10	27	THE 1972 SC DEMOCRATIC CONVENTION Contains annual report of SC Commission, Bills, State Legislation, 1974 SC Statistical Abstract, and Population Statistics and Projection. In chronological order.	1972, 1974

II

DESCRIPTION OF SERIES (cont.)

<u>Box(es)</u>	<u>Folder(s)</u>	<u>Series</u>	<u>Year(s)</u>
11	28	THE 1972 NATIONAL DEMOCRATIC CONVENTION Contains 4 Democratic Convention Pamphlets, a "Black Politics" booklet, and a "New Politics" booklet. In chronological order.	1972
12	29	RECEIPTS Contains a bank receipt and notes on money spent. In chronological order.	1982, nd
12	30	PAPERS RELATING TO THE FUND-RAISING BIKE RIDE FOR THE MENTALLY RETARDED A letter about the success of the Bike Ride Plan, a Bike Ride Planning Guide, and a letter about the purpose and location of the Bike Ride Plan.	1972, nd
12	31	NEWSLETTERS Contains "The Informed Delegate '72" periodical, Telephone Guide Directory, The Chicago Credentials Challenge, a National Policy and the Economic Systems Pamphlets. In chronological order.	1972, nd
12	32	NEWSPAPER CLIPPINGS Contains clippings on the campaign of Ernie Nunnery and John Spratt. In chronological order.	1972-1982, nd
13	33	MISCELLANEOUS Contains a Map, a pamphlet on the "Beautification of Home Grounds", "Biographies and Pictures of members of the Senate and House of Representatives" pamphlet, "State Legislatures" pamphlet, "The Voice of Business" pamphlets, and the "Mila Style Sheet" pamphlet.	1961-1982, nd
12	34-35	MISCELLANEOUS PAPERS Folder 34 contains random news articles that were found inside the various family Bibles. Folder 35 contains other random handwritten papers that were found in the Bibles.	nd
12	36	AMERICAN JOURNAL OF PUBLIC HEALTH This collection contains an article from the October 1929 issue of <i>The American Journal of Public Health</i> . The article is entitled "Endemic Goiter and Its Relation to Iodine Content of Food" written by Dr. James A. Hayne, M. D., Fellow A. P. H. A.	1929

II

DESCRIPTION OF SERIES (cont.)

<u>Box(es)</u>	<u>Folder(s)</u>	<u>Series</u>	<u>Year(s)</u>
12	37	CATTLE REGISTERS This collection contains birth and sale records for cattle bought by M.A. Nunnery of Fort Lawn, SC.	1920-1961,nd
--	--	FINANCIAL LEDGERS This collection contains 6 Bound volumes. In chronological order.	1928-1959
13-14	19-37 <sup>1</sup>	BOUND VOLUMES This collection contains many different family members' copies of the Bible. Items 1-18 are in phase boxes due to their fragile nature. Tomes in phase boxes are arranged by size, largest to smallest. <sup>2</sup>	1838-1895

---

<sup>1</sup> Please note: Bound Volumes are in boxes with item numbers, **NOT** folder numbers.

<sup>2</sup> For list of bound volumes please see Appendix I.



APPENDIX I

BOUND VOLUMES

<u>ITEM</u>	<u>DESCRIPTION</u>	<u>DATE</u>
1	HOLY BIBLE	ca 1892
2	AN EXPOSITION OF THE OLD AND NEW TESTAMENT VOL I	1898
3	AN EXPOSITION OF THE OLD AND NEW TESTAMENT VOL III	1898
4	THUNDERBOLT	1895
5	LITERATURE TEXTBOOK	nd
6	A CONCORDANCE TO THE HOLY SCRIPTURE	nd
7	HOLY BIBLE BEOLONGING MRS. M.A. NUNNERY	1895
8	NEW TESTAMENT	1939
9	1912 ALMANAC	1912
10	CHEERFUL SONGS	nd
11	HOLY BIBLE BELONGING TO JIMMIE NUNNERY	nd
12	PHYSICS TEXTBOOK	1878
13	ENGLISH HOMESCHOOL TEXTBOOK	ca 1895
14	US HISTORY	ca 1870
15	ENGLISH HOMESCHOOL TEXTBOOK #2	ca 1895
16	1860-1865: A ROMANCE OF THE VALLEY OF VIRGINIA	1892
17	HISTORY OF SOUTH CAROLINA	ca 1898
18	POCKET NEW TESTAMENT	nd
19	USC LANCE	1976
20	THE CENTENNIAL OF LIMESTONE COLLEGE	1945
21	MONTHLY CONSULAR AND TRADE REPORTS	1906
22	ERSKINE COLLEGE CATALOGUE	1902
23	THE FURMAN ECHO	NOV 1898
24	THE FURMAN ECHO	NOV 1898
25	THE FURMAN ECHO	JUNE 1899
26	THE FURMAN ECHO	MARCH 1900
27	THE FURMAN ECHO	DEC 1900
28	THE FURMAN ECHO	APRIL 1901
29	THE FURMAN ECHO	JUNE 1901
30	THE FURMAN ECHO	FEB 1902
31	THE FURMAN ECHO	MAY 1908
32	THE FURMAN ECHO	DEC 1908
33	TEXTBOOK CATALOGUE	1901
34	INJURED IN THE COURSE OF DUTY	nd
35	HARVEY'S DEMPHOOLISHNESS	nd
36	NEW TESTAMENT BELONGING TO J.E. NUNNERY	nd
37	<i>A SUCCESSFUL SHADOW; OR, A DETECTIVE'S SUCCESSFUL QUEST</i> by Old Sleuth (Harlan Page Halsey) -Possibly an alternate title for <i>A Successful Shadow; or, Jack and Gil's Greatest Catch</i> (No. 112, April 25, 1898)	nd