



Bleachery Beacon

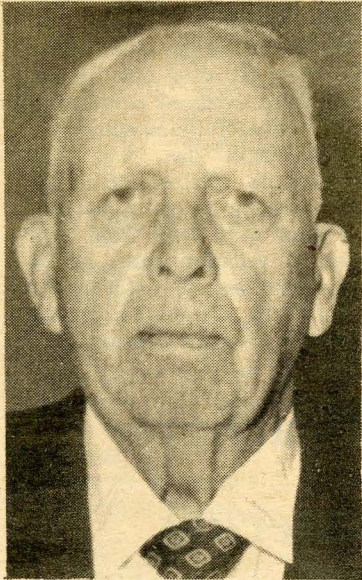
7-1979

Bleachery Beacon - July 1979

Rock Hill Printing and Finishing Company

-1979-
*Our Golden Anniversary Year,
 As A Citizen Of York County.*
 RHP&F 1929-1979

McGuire And Laney First To Enter 50 Year Club



Grier McGuire
 -50 Year Club-

Grier McGuire, Filter Plant and Roy Laney, Mechanical Department, two of the five active members of the Bleachery Charter Group, the "Brick and Mortar Gang", will be initiated into the first RHP&F 50 Year Club during early August. This select group of five Bleachery employees are the remaining members of the original work force of 239 Bleachery employees who set the Bleachery into operation in 1929. The other three 'early birds' are Marion Seely, Engraving; Pauline Baskin, Packing and Franklin Walker, Color Department.

McGuire has been pumping water from the Catawba River to the City of Rock Hill and the Bleachery for more than 60 years. He has lived most of his life at the RHP&F pumping station on the Catawba. Even before the station was built in 1929, he had worked ten years as a pump station operator for the City of Rock Hill at the same location.

McGuire, now 82, recalls the pipeline

from the river to the Bleachery was laid in 1928 and between then and the end of 1929, he "just switched over" to Bleachery employment.

Not only has Roy Laney been employed at the Bleachery since the company first began operation 50 years ago, but he is another who helped build the plant back in 1929. He was also a member of the "Bull Gang" which moved machinery into the building and helped erect certain sections of the plant.

He, like McGuire, just "slid over into Bleachery employment" in the Mechanical Department when the plant was made operational and has been there ever since.

Laney, now 77, and for years a pipe-fitter in the Mechanical Department, is in charge of unloading of transport shipments arriving at the Bleachery.

He remembers vividly the day the plant "started to roll", first with only eight print machines.



Roy Laney
 -50 Year Club-

Bleachery Sponsors Boy's Camp For 30th Year



During the past 30 years, more than 1,000 youngsters from the Rock Hill area have been sponsored by the Bleachery to attend the Worthy Boy's Camp operated by the Rock Hill Police Department since 1949. Today, a lot of these "youngsters" are grown men and have taken their place in the community helping to make Rock Hill a better place in which to live. Few if any, will ever forget their youthful summertime stay at the Worthy Boy's Camp. Many of their sons have already attended the thirty year old summer camp.

As depicted in the 30th anniversary

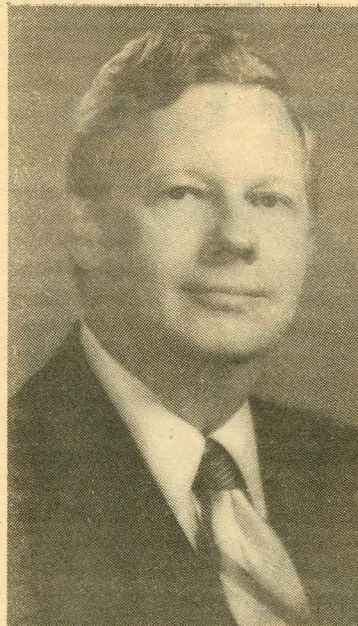
photo above, representatives of Rock Hill Printing and Finishing have joined with members of the Police Department each year since 1949 to take part in the camper's "Graduation and Awards Day." RHP&F supported the idea of the "Worthy Boy's Camp" from the beginning and has continued this support over the years.

Begun under Police Chief "Zip" Hanna in 1949, the idea of a local "Worthy Boy's Camp" was established entirely through community support by civic, business, industrial and private groups.

The camp site is located on Neely's Creek Road, about 7 miles from Rock Hill, between Lesslie and Rock Hill. Since its beginning, due to the enthusiastic community support, the camp has grown to 51 sprawling acres with a 5 acre lake for swimming, fishing and boating.

More 150 worthy boys, in groups of approximately 30, attend the five, 1-week summer camp sessions. Each group attending the one-week of camping, is sponsored by local business, industry and civic organizations.

E. Ross Blew Is Elected Board Chairman RH Red Cross Chapter



E. ROSS BLEW

E. Ross Blew, RHP&F vice president, Public and Industrial Relations, was elected Chairman of the Board of Directors of the Rock Hill Chapter, American Red Cross, at the recent annual meeting of the chapter.

Serving with Blew during the coming year will be William T. Simpson, Vice-Chairman; James H. Freeman, Treasurer; John J. McDermott, Secretary and Mrs. Richard E. Nelson, Chairman of Volunteers.

Blew had been serving since January as acting chairman of the Red Cross board, filling out the unexpired term of Jim Babb, manager, of the Rock Hill Sears store, who was transferred from the area.

Elected to the Board of Directors for a three year term were Mrs. Daniel O. Aycock, Lyle M. Christian, The Rever-

end J. Grafton Cockrell, James H. Freeman, James W. Hampton, Mrs. Clarence Hornsby, Jr., Hiram Hutchison, Albert G. LeRoy, M.D., Dr. Mary E. Littlejohn, John J. McDermott, John W. Ramseur, Osbey Roddey, B. Jeff Savage, Jr., William T. Simpson and Bob E. Slough.

Blew has been active with the Red Cross chapter in Rock Hill for over four years and has served as Chairman of the Blood Committee, Secretary, Treasurer and Vice Chairman of the Board of Directors.

A native of Canada and graduate of Buffalo University, Blew came to Rock Hill Printing and Finishing in September 1973, succeeding John H. Marshall who retired as vice president, Public and Industrial Relations.

"Riverside Services" Being Held At Joslin Park Each Sunday

For the third consecutive year, special summer "Riverside Services" are being co-sponsored each Sunday morning at Joslin Park from 9:00 A.M. to 10:00 A.M. by the membership of the India Hook United Methodist Church and the Aldersgate United Methodist Church. The 1979 weekly Sabbath services began during June and are scheduled to continue each Sunday through Labor Day Weekend, Sunday, September 2.

According to Reverend Charles R. Inabinet, "the services are ecumenical in nature, with a number of denomina-

tions taking part. Everyone is invited to attend." We began the program of 'Riverside Services' to provide an opportunity for weekend visitors at Lake Wylie to easily attend Sunday services."

Reverend Inabinet indicated that dress is casual and the services are conducted in an informal and peaceful atmosphere.

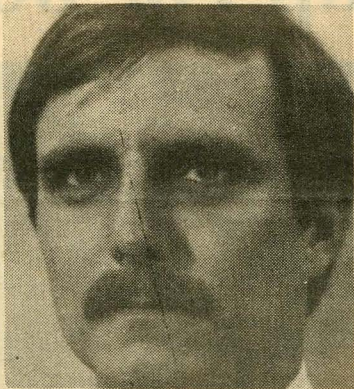
Attendance has been most encouraging. Visitors attend services, arriving by car or by boat and some even walk from their weekend vacation spots at the lake. Services are held in the Joslin Park Clubhouse in the event of inclement weather.

Revels Made Corporate Fleet Operations Head

Ray V. Revels, former operations manager, Catawba Trucking, has been appointed operations manager of the M. Lowenstein Corporate Fleet based in Rock Hill. In his new capacity, Revels will be reporting to Hughey Stutts, Corporate Fleet manager.

A native of Rock Hill and a veteran of the commercial trucking business, Revels joined Catawba Trucking in December 1978 as operations manager under John Strawhorn, Catawba Trucking manager.

Revels attended Winthrop Training School prior to moving with his family to Lumberton, North Carolina where he graduated from Lumberton High School in 1967. He then attended East Carolina University in Greenville, N.C. as a Liberal Arts Major until the



RAY V. REVELS

end of 1969.

He also attended Newberry College in Newberry, South Carolina for a year, during which time he joined Contract Carrier, Inc., his family-owned trucking business based in Newberry.

Imports Decline

Imports of textile and apparel products totaled 388 million square yard equivalents in May, a drop of 18 percent from May last year. For the first five months, imports totaled two billion SYE, a drop of 19 percent. Yarn, fabric and apparel groups were each below last year's levels for both the single month and for the January-May period.

In a related report, the U.S. Department of Agriculture announced a continuing import decline on a poundage basis, and another big increase in exports of textiles and apparel.

Safety Glasses

Available Thru

Medical Clinic

In order to promote eye safety among Bleachery employees, RHP&F offers prescription safety glasses as well as 'Plano' type safety glasses (plain lens and non-prescription glasses), through the payroll deduction plan. The program, which provides a monetary savings to the employee, is administered similarly to the safety shoe payroll deduction plan.

Employees throughout the plant were notified during May that they should contact the First Aid Nurse if they wish to take advantage of the program. The nurse on duty will handle all the details for the employee and will furnish cost information and a full explanation of the program if so desired.

'Plano' type safety glasses, either with clear or tinted lenses, may be obtained simply by placing an order with the First Aid Nurse and signing a payroll deduction slip.

To obtain prescription safety glasses, the employee must first obtain an order form from the nurse on duty. This form must be taken by the employee to his optometrist or ophthalmologist to obtain the necessary prescription. The employee must then return the order form to First Aid and may sign a payroll deduction slip at that time.

Whitley Joins Bleachery Industrial Engineering

Gary T. Whitley, formerly an Industrial Engineer with the Collins and Aikman Corporation, has accepted employment in the Bleachery Industrial Engineering Department. He has been assigned the duties of project engineer in work measurement and will be reporting to Ken Parson, RHP&F Senior Project Engineer.

A native of Albemarle, North Carolina, where he graduated from West Stanley High School in 1970, Whitley attended the University of North Carolina at Charlotte, N.C. He earned his BA Degree in Business Administration in December 1974 at UNCC. Gary was credited with a double major at UNCC in both Business Administration and Economics. He was also a member of the Economics Honor Society.

Following his graduation from UNCC, Whitley was employed with the Collins and Aikman Corporation textile firm as an Industrial Engineer from 1975 to 1979.

While with Collins and Aikman, Whitley began working on his Masters Degree in 1975 at the University of South Carolina and was granted his MBA Degree in Business Administration at USC in May of 1978.

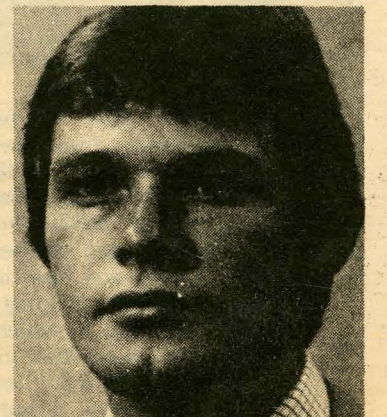


Gary T. Whitley

Demink Employed As Management Trainee

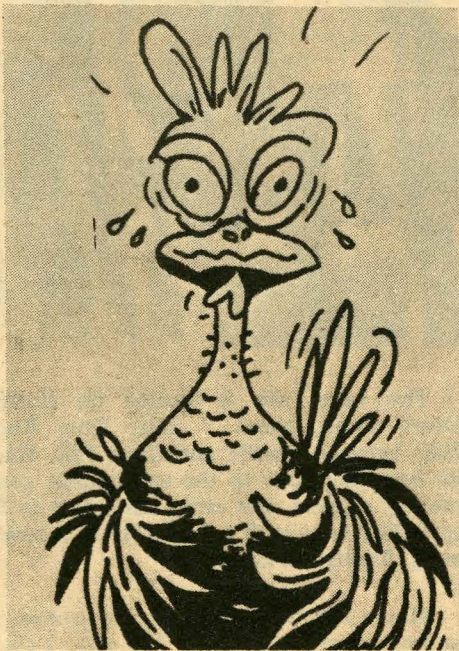
Herman Demink, Jr., native of Gastonia, North Carolina, has accepted employment at Rock Hill Printing and Finishing as a Management Trainee. Demink was born in Cambridge, Massachusetts but moved with his family to Gastonia at an early age. He graduated from high school in Gastonia in 1975.

Following high school, he attended Clemson University where he graduated in May 1979 with a BA Degree in Economics and a minor in Textile Technology.



Herman Demink, Jr.

WHO'S CHICKEN?



(We'll find out in September)

RHP&F Service Clubs - August 1979

5 YEAR CLUB DEPARTMENT ANNIVERSARY DATE

None.

EDITOR'S NOTE: Employees who have recorded 6-7-8-9 years service will automatically become members of the 5 Year Club on the anniversary date of their employment. They will be presented with the Five Year Service Award under the new Corporate-wide Service Award Program.

(6 Years of Service)

Thomas E. Childers	Print	8-6-73
William M. Sims	Mechanical	8-6-73
Stevie S. Anderson	Laundry	8-10-73
Robert W. Agers	Screen Print	8-13-73
E. Wayne Osborne	Screen Print	8-13-73
Barron C. Scoggins	Screen Print	8-17-73
James H. Hallman, Jr.	Mechanical	8-20-73
Hazel H. Neal	Systems	8-20-73
George W. Parham	Screen Print	8-23-73
James H. Barnes, Jr.	Screen Print	8-27-73

(7 Years of Service)

Claude W. Giles	Soapers	8-24-72
Jack D. Douglas	Print	8-28-72
Charles E. Cathcart	Packing	8-31-72

(8 Years of Service)

Elizabeth F. Foxx	Packing	8-2-71
Mary L. O'Neal	Mechanical	8-3-71
James C. Hunter	Screen Print	8-3-71
Charles D. Simon	Screen Print	8-3-71
William D. Feely	Frames	8-6-71
Sara L. Beamguard	Packing	8-10-71
Mary Joe Gardner	Industrial Engineering	8-16-71
George W. Culp	Screen Print Prep.	8-16-71
Ezell J. Starnes, Jr.	Mechanical	8-23-71
James H. McFadden, Jr.	Filter Plant	8-23-71
Willie F. Hinton	Packing	8-23-71
Brenda H. Guy	Power Plant	8-30-71
Donna R. Murphy	Distribution	8-30-71

(9 Years of Service)

Walter Caldwell, Jr.	Packing	8-4-70
Elizabeth F. Caveny	Packing	8-5-70
Annis C. Becker	Packing	8-10-70
Leroy Robinson, Jr.	White	8-24-70
Robert S. McManus	Packing	8-24-70
Richard L. Miller	Packing	8-31-70
Robert W. Wright	Color	8-27-70

10 YEAR CLUB

Jerre Hollinger, Jr.	Color	8-5-69
Pauline N. Jordan	Open Stock	8-6-69
Joanne Nivens	Systems	8-11-69
Lex H. Watson	Rayon	8-14-69
Gene A. Hemphill	Yard	8-19-69
Jennie L. Gilfillan	Packing	8-19-69
Helen H. Stutts	Packing	8-25-69
Paul Knowles	Security	8-25-69
Norma Currence	Packing Control	8-26-69
Junior A. Hemphill	Print	8-26-69

15 YEAR CLUB

Steve V. Wells	Frames	8-24-64
----------------	--------	---------

20 YEAR CLUB

Gene C. Jackson	Print	8-18-59
James H. Nunn	Print	8-20-59

25 YEAR CLUB

Floyd E. Neal	Dye	8-03-54
James M. Covington	Print	8-16-54

30 YEAR CLUB

William B. Reinhardt	Screen Print Prep.	8-15-49
James E. Whitehurst	Agers	8-15-49
Wilma Pendleton	Customer Services	8-19-49
Fay E. Giles	Distribution	8-25-49
Jeff Adams	Packing	8-31-49
Phillip Jackson	Packing	8-31-49

EDITOR'S NOTE: Employees who have recorded 31-32-33-34 years service will automatically become members of the 30 Year Club on the anniversary date of their employment. They will be presented with the 30 Year Service Award under the new Corporate-wide Service Award Program.

(31 Years of Service)

William H. Jenkins	Rayon	8-16-48
Robert E. Robinson	Print	8-24-48
Thomas H. Smith	Color	8-26-48
Wayne Henderson	Print	8-30-48
Alma P. Pack	Open Stock	8-30-48
Sanford C. Parker	Dye	8-31-48
Homer C. Bennefield	Mechanical	8-31-48

(32 Years of Service)

Mack Alexander	Print	8-4-47
Elizabeth S. Crowder	Customer Service	8-4-47
Edgar Nivens	Screen Print	8-11-47
Emuel L. McDaniel	White	8-11-47
William G. Blackmon	Rayon	8-18-47
John W. Pierce	Print	8-20-47
Marvin L. Ramsey	Print	8-25-47
Otho P. McDaniel	Packing	8-26-47

(33 Years of Service)

Edith Ratteree	Open Stock	8-1-46
Dean E. McFadden	Print	8-19-46
William E. Belue	Print	8-19-46
James M. Lattimore	Color	8-22-46
Robert L. Price, Jr.	Frames	8-22-46
David L. Adkins	White	8-29-46

(34 Years of Service)

Charles Rawlins	Stock Room	8-14-45
Otis H. Helms	Calendars	8-20-45
William T. Swann	Quality Control	8-20-45
Ann Vaughn Hester	Packing	8-23-45

35 YEAR CLUB

Frances W. Sexton	Packing	8-11-44
Javan P. Parks	Distribution	8-17-44
John J. Neely	Print	8-29-44

40 YEAR CLUB

John Martin, Sr.	Packing	8-21-39
------------------	---------	---------

EDITOR'S NOTE: Employees who have recorded 41-42-43-44-45 years service will automatically become members of the 40 Year Club on the anniversary date of their employment. They will be presented with the 40 Year Service Award under the new Corporate-wide Service Award Program.

(41 Years of Service)

Harry E. Howard	Packing	8-3-38
-----------------	---------	--------

(42 Years of Service)

None.

(43 Years of Service)

None.

(44 Years of Service)

None.

45 YEAR CLUB

None.

EDITOR'S NOTE: Employees who have recorded 46-47-48-49 years service will automatically become members of the 45 Year Club on the anniversary date of their employment. They will be presented with the 45 Year Service Award under the new Corporate-wide Service Award Program.

(46 Years of Service)

None.

(47 Years of Service)

None.

(48 Years of Service)

None.

(49 Years of Service)

None.

50 YEAR CLUB

Grier McGuire	Filter Plant	8-00-29
Roy Laney	Mechanical	8-20-29

For The Sportsman

HUNT APPLICATIONS

Hunt applications for deer hunts on the Webb Wildlife Center in Hampton County and the Santee Coastal Reserve in Georgetown County are now available, the state wildlife department has announced.

Archery and gun hunts are scheduled for each area and a muzzle-loader hunt for the Webb Center next season. A public drawing will be held at the Wildlife department's Columbia office August 14 to select hunters to participate in the hunts.

To receive applications write: Hunt Application, P.O. Box 167, Columbia, S.C. 29202. Persons interested in one area only, should specify that area.

GAME MAP - BROCHURE

The 1979-1980 state Game Management Area Brochure with regulations and maps showing public hunt areas throughout the state is now available from the South Carolina Wildlife and Marine Resources Department.

Schedules of all public hunts on the 1.6 million areas of game management areas are also listed in the brochure. The map-brochure is available at no cost by writing: Hunt Map, P.O. Box 167, Columbia, S.C. 29202.

WILDLIFE VIOLATIONS POINT SYSTEM

A point system similar to state highway department's program for traffic violations goes into effect for wildlife violations this month, according to the state wildlife department.

The law, passed in 1977, assigns points for various game and fish violations which are awarded a violator upon conviction. Once the repeat violator accumulates 18 points, he or she loses hunting and fishing privileges for one year.

Points are assigned on the seriousness of the offense. Resisting arrest for example, carries the maximum 18 points while four points would be awarded anyone convicted of shooting migratory birds with an unplugged gun.

Anyone breaking a suspension of privileges will face further penalties that could include as much as a \$500 fine and 90 days in jail.

HUNTING & FISHING POSTER CONTEST

The South Carolina Wildlife Federation wants a South Carolina youngster to win money or prizes in the second annual National Hunting and Fishing Day poster contest held annually by the National Shooting Sports Foundation.

The state affiliate of the National Wildlife Federation has decided to sponsor the contest in South Carolina. The contest provides a top prize of \$1,000 and 36 prizes totaling \$2,700, and is open to students in grades 5 through 12.

The contest theme is "The Sportsman and Conservation... A Tradition of Cooperation."

RHP&F

Federal Credit Union Financial Statement

JUNE 30, 1979

ASSETS:

Loans To Members (4,068)	\$ 8,469,854.96
Investments	2,393,883.45
Land and Building	11,251.00
Other Assets	66,105.43
Total Assets	\$10,941,094.84

LIABILITIES:

Member Shares (5,036)	\$10,041,868.43
Accounts Payable	143,741.80
Reserves	747,438.41
Other Liabilities	8,046.20
Total Liabilities and Equity	\$10,941,094.84

2nd Quarter Dividend \$150,421.87

For the second time this year, RHP&F Federal Credit Union tacked on a 3/4% "bonus" to the 6% per annum interest rate when it paid Credit Union members a total of \$150,421.87 in dividends at the end of the second quarter on June 30. The dividends, computed at the full 6 3/4%, were deposited to member accounts at the end of the quarter which covered the 3 month period, April, May and June.

Payment of the second quarter dividend brought total 1979 dividend payments to \$299,540.61.

At the end of the first quarter, on March 31, 1979, the quarterly dividend deposited to member accounts amounted to \$149,118.74. First quarter dividends were also paid at the 6% per annum rate of interest, coupled with an additional 3/4% interest "bonus".

It should be noted that the dividends paid to member accounts at the end of the first and second quarters do not include interest for these quarters, paid to members holding Share Certificates. These Share Certificates bear varying interest rates of: 6 3/4% for 1 year certificates; 7% interest for a 2 year certificate and 7 1/2% for 4 year certificates.

Dividends deposited to member accounts by the Credit Union are paid on multiples of \$5.00 on saving accounts. Deposits made by the 10th day of the month earn the per annum interest rate from the first day of the month.

July CU Statement

By On Line Data Process

Financial statements covering the first quarter (April, May and June) were mailed to the Credit Union membership in early July. These were the first statements produced by the newly installed on Line Data Processing system adopted by the Credit Union. Even though the format of the statement is slightly different, it contains additional information for the Credit Union member.

SS Announces Toll-Free Medicare Phone Service

Claimants who have questions about Medicare claims, reimbursements and covered services under Medicare, may now call the new toll-free telephone service 1-800-922-2340 according to an announcement by the Social Security Administration in Rock Hill.

Ms. Suzanne Smith, district manager of the Rock Hill Social Security office, said, "Much faster service will now be available to the public by the use of this toll free telephone number. There is no charge to the caller."

Ms. Smith stated that if anyone has a question about their "Medicare Part B claims, reimbursements, or covered services" can now use this toll free service to get a prompt reply.

SAFETY SCOREBOARD

12 Months July 1, 1978-June 30, 1979

DEPARTMENT	MANHOURS	ACCIDENT INCIDENCE*
Laboratory	55,571	0
Stock Room	19,628	0
Office	608,920	.66
Distribution	160,142	2.5
Color	227,104	3.5
Yard & Laundry	49,963	4.0
Dye	149,802	4.0
Sample	49,913	4.0
Age & Soap	93,457	4.3
Open Stock	88,810	4.5
Packing	754,760	4.8
Screen Print	248,823	5.6
Plant Services	66,580	6.0
Engraving	91,499	6.6
Finishing	381,642	6.8
White	202,541	6.9
Nappers	113,307	7.1
Greige	105,824	7.6
Mechanical	434,599	8.7
Print	718,821	10.3
Power	58,232	10.3
Rayon	96,642	10.3
Bleach	67,198	11.9
Strike-Off	12,155	16.4
Total	4,856,725	5.9

*Accident Incidence is the number of accidents that require treatment by a physician, per 100 employees per year.

The National Safety Council and the Department of Labor (Federal and State), have adopted this means of measuring safety performance. Accident Incidence is considered to be more meaningful than Lost Time Accidents.

Safety Shoe Showcase



STYLISH, COMFORTABLE, PRACTICAL - - AND SAFE! - Bobby Sinclair, left, Calenders Department, and William G. Vinson, Bleachery electrician, "window shop" at the new Safety Shoe display window recently installed just outside the Bleachery Medical Clinic. The shoe display case was constructed in duplicate, with double deck displays back-to-back and may be seen by employees passing the clinic from both directions.

Safety records reveal that the feet and toes continue to be the most susceptible to plant accidents. Also on record are the countless cases of workers who were spared severe injury to foot and/or toes because they were wearing Safety Shoes.

More than 136 styles of Safety Shoes are offered "for sale at a savings" (both financial and physical) to Bleachery employees for their protection by the RHP&F Safety Department. Today's safety shoes not only afford "steel cap" protection to the wearer's toes and feet, but the shoes are stylish and designed to give maximum comfort as well.

The Safety Shoe manufacturer has kept in step with the fashions and today's safety shoes can be bought "at cost", and in the latest shoe fashions for both men and women, at a price that is less than that paid for most regular shoes. Purchases may be made either by cash or by payroll deduction.

Bleachery employees presently wearing safety shoes all agree that the savings and the comfort of the safety shoe influenced their choice - - and they consider the safety factor as an added and assuring asset.