



Bleachery Beacon

4-1979

Bleachery Beacon - April 1979

Rock Hill Printing and Finishing Company

Follow this and additional works at: <https://digitalcommons.winthrop.edu/bleacherybeacon>

-1979-
Our Golden Anniversary Year,
As A Citizen Of York County.
RHP&F 1929-1979

BLEACHERY BEACON
Published By Rock Hill
P.O. Box 10272
Printing & Finishing Co.
Rock Hill, S.C. 29730

VOLUME 10, ISSUE 4

APRIL 1979

ROCK HILL, S.C.

Bleachery "Very Impressive!"

Chinese Textile Trade Group Visits RHP&F

Rock Hill Printing and Finishing was host during April to five members of the China National Textile Import and Export Corporation, based in Peking, People's Republic of China. The group was part of the China Textile Industry Survey Team, a 13 member delegation from the People's Republic of China, touring the American textile and man-made fibers industry to further trade and technological ties with the American textile industry.

The visit took place as a government team, under textile apparel negotiators, began meetings with Chinese officials for the first bilateral trade agreement in modern history between the two countries. Negotiations were expected to continue for two weeks.

Known as "Chinatex", the China National Textile Import and Export Corporation is one of China's eight corporations responsible for carrying out China's foreign trade.

The group of five Chinese textile representatives was headed by Wang Mingjun, Managing Director of the China National Textiles Import and Export Corporation and accompanied on their visit to RHP&F by two officials of M. Lowenstein and Sons, Inc., Max Levinson, Director of Purchasing and President of Olympic Textiles International, Inc., a wholly owned subsidiary of MLS, and Carlos Fuchs, Vice President, Export Division of Lowenstein.

Other Chinese textile representatives from the People's Republic of China were: Fang Siyuan, Engineer, Ministry of Textile Industry; Li Guojie, Engineer with the Light-Industry Bureau, State Economic Commission; Wu Shudong, Staff Member and Interpreter, China National Import and Export Corporation and Huang Tsien-mo, Liaison Officer and Second Secretary of the

Chinese Embassy.

Aquille M. Hand, RHP&F Director, Manufacturing, assisted by Emile Russett, RHP&F Division Superintendent, Printing, were hosts to the visiting group in Rock Hill.

Following briefings conducted by Hand and Russett, members of the delegation were escorted on a detailed tour of the entire plant at RHP&F. They were also entertained at a luncheon in the Industrial Relations Building and a dinner held at the Radisson Plaza Hotel in Charlotte in the evening.

During the plant tour, members of the delegation observed production techniques, procedures, examined machinery and equipment. They asked many questions, some including salary and pay procedures, pension plans, working hours, and through their interpreter Wu Shudong, "Where do your workers live?" Hand replied, "Approximately ninety-two percent of our employees live in York County."

The group concluded their visit to the Bleachery "very impressed" according to Wang Mingjun, who headed the group. He indicated, "The plant has a long history and the production is very good. It is very impressive."

The April visit of the Chinese delegation to the Bleachery was made almost four years to the day following the first visit of a textile from the People's Republic of China in late March 1974.

The initial visit was at the invitation of the National Council for U.S.-China Trade. Mr. Philip Feibusch, Executive Vice-President of M. Lowenstein and Sons, Inc. who visited China on textile matters in 1974, was instrumental in arranging for the 1975 visit.

(Additional photographs of visit, pages 4 and 5).



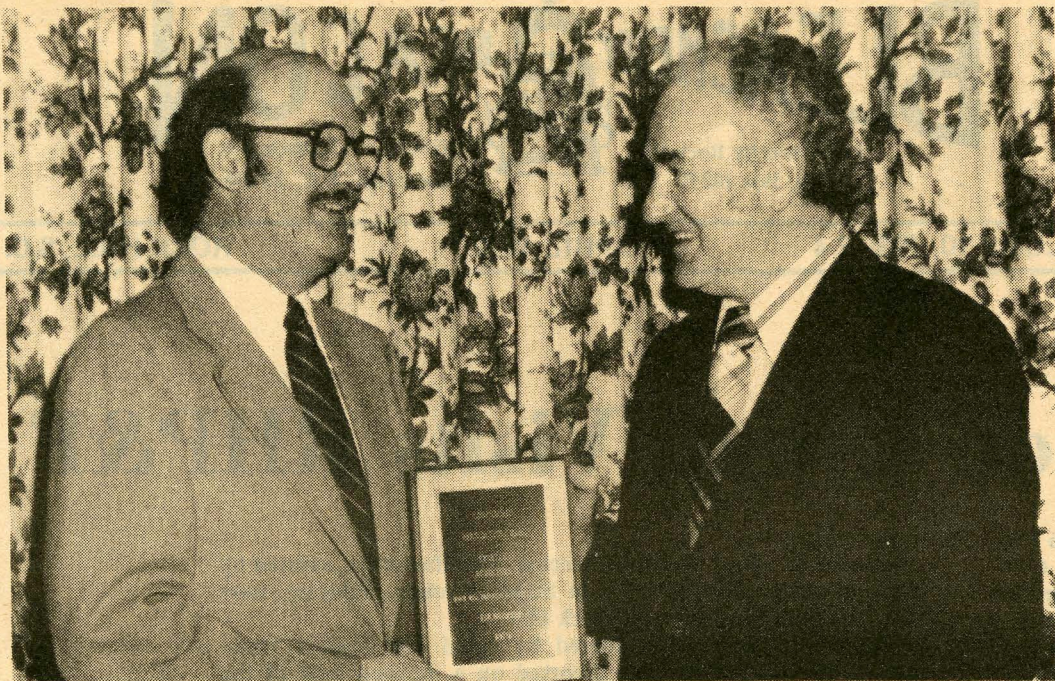
—Visitors From The People's Republic Of China View Screen Print—

Members of the delegation from The China National Textile Import and Export Corporation, Peking, China who visited the Bleachery during April, receive a briefing on RHP&F Screen Print operations at machine-side from Aquilla M. Hand, Director, Manufacturing.

The Chinese group of five textile representatives came to the United States a part of the 13 member delegation from the People's Republic of China touring the American Textile and man-made fibers industry to further trade and technological

ties with the American Textile Industry.

Pictured from left to right are: Aquilla M. Hand; Wang Mingjun, Managing Director of China National Textiles Import and Export Corporation, Peking, China, who headed the visiting group; Wu Shudong, Staff Member and Official Interpreter, China National Textiles Import and Export Corporation and Max Levinson, Director of Purchasing, M. Lowenstein and Sons, Inc. and President, Olympic Textiles Internationally, Inc., a wholly owned subsidiary of M.S.



PASS THE WORD - William H. Grier, Jr., left, RHP&F vice president and general manager, extends congratulations to Bleachery employees through Aquille M. Hand, right, Director, Manufacturing stating, "Let all of our people know that they are responsible for this recognition for our plant. Winning of the 'Lowenstein President's Award For Excellent Achievement' for the first quarter 1979 was due to their initiative and hard work. Their efforts made it possible."

The award was presented to Rock Hill Printing and Finishing by L. Terrell Sovey, Jr., MLS president and chief operating officer, at the recent awards banquet held in Lyman, S.C.

Winner Selected In June

Seven High School Graduates Bid For Lowenstein Scholarship

Seven qualified graduates of York County area High Schools, four daughters and three sons of employees of Rock Hill Printing and Finishing have applied for the 1979 Lowenstein Scholarship Award. The scholarship amounts to \$1,000 per year, or a total of \$4,000 for a normal four-year college period, and will become effective at the beginning of the 1979-1980 school year.

The selection process is already underway and announcement of the winning student is scheduled to be made during the month of June 1979.

Area high school graduate applicants vying for the 1979 scholarship award are as follows:

lows:

Catherine Grey Carrington-daughter of Boyce Harwell, Director, Industrial Engineering at Rock Hill Printing and Finishing. Catherine is a senior at Rock Hill High School and plans to attend the University of North Carolina, Rice University or the University of Colorado and major in Music, Performance.

Lori Cornelia Roach, daughter of Thomas Roach, III, Supervisor in the Distribution Department at Rock Hill Printing and Finishing. Lori is a senior at Rock Hill High School and plans to attend Winthrop College where she will major in Business

Administration.

Melinda Susan Newton, daughter-in-law of Forrest Newton of the Frames Department at Rock Hill Printing and Finishing. Melinda is a senior at Clover High School, Clover, S.C. and plans to attend Winthrop College, majoring in Data Processing.

Alisa Ann Gilfillan, daughter of Johnnie B. Gilfillan, Sr., Winder in the Packing Department at Rock Hill Printing and Finishing. Alisa will graduate in May from York Comprehensive High School, York, S.C. and has already been accepted at Clemson University where she plans to major in Engineering Technology.

Harold Alan Hinson, son of William R. Hinson, Mechanic in the Mechanical Department at Rock Hill Printing and Finishing. Harold is a senior at Rock Hill High School and has applied for enrollment at Clemson University where he plans to major in Computer Engineering.

Barry Eugene Hawkins, son of Halkard A. Hawkins, Electrician in the Mechanical Department at Rock Hill Printing and Finishing. Barry is a senior at Rock Hill High School and plans to attend Clemson University where he will major in Agriculture Education.

William David Anderson, son of James D. Anderson, Manager, Sample Department at Rock Hill Printing and Finishing. William is a senior at Rock Hill High School. He plans to begin his college career at Winthrop College, later transferring to Clemson University where he will major in Electronics.

Taryn White Joins RHP&F As Management Trainee



Taryn White

Taryn White, formerly with Allied Chemical Company, has accepted employment at the Bleachery as a Management Trainee. She will be working on special projects at RHP&F for the remainder of the summer.

Taryn served approximately one year as first line supervisor of the Draw Twist Department in nylon production at the Allied plant in Columbia, S.C.

She is a native of Charlotte, N.C. where she graduated from Garringer High School and holds a BS Degree in Textile Chemistry earned at N. C. State in 1978.

Taryn is married to Derek White, formerly of Fayetteville, N.C. They reside in Charlotte where Derek is employed in sales, with Pool Builders Supply Company.

RHP&F Receives Award For 'Excellent Achievement'

Employees of Rock Hill Printing and Finishing were honored last week when, in their behalf, the "Lowenstein President's Award For Excellent Achievement" for the first quarter of 1979, was presented to RHP&F. The Bleachery was selected during April to receive the president's plaque at the awards banquet in Lyman, S.C., following the quarterly manufacturing review by plant managers and Lowenstein corporate officials. L. Terrell Sovey, Jr., MSL president and chief operating officer made the presentation to Aquille M. Hand, Director, Manufacturing, representing the Bleachery.

Twenty three Lowenstein manufacturing facilities participated in the corporate awards program, competing, not necessarily with each other, but with "standards of achievement" based upon a point system encompassing the following categories: Returns and Allowances; Product Quality; Product Yield; Labor and Efficiency; Employee Turnover; Absenteeism; Excel Program ("Project Re-think"); Water Usage; Energy and Service.

"We can all be justly proud that our plant has received this recognition," William H. Grier, RHP&F vice president and general manager said. "It was possible only through our combined efforts in initiative and hardwork that made it possible. Although we can take pride in the selection of RHP&F to receive the award, and while we can all be satisfied with the progress we have made and are making in some areas, we must realize that all of our grades were not high."

With reference to the "standards of achievement", setting the criteria for accomplishment during the first quarter, Grier said, "In some vitally important areas, we have not yet reached our potential. In the months ahead we will be concentrating on these areas needing our attention, while at the same time, maintaining our position in the stronger areas of our endeavors."



Trina Robinson Listed In Student "Who's Who"

Trina Robinson, Accounting Clerk in the Bleachery Accounting Department beams over the citation listing her in the current national educational publication "Who's Who Among Students in American Junior Colleges."

Trina has been majoring in accounting at York Technical College for the past two and a half years and will be awarded an Associate of Science Degree in Accounting in late May of this year. A native of Rock Hill, Trina attended the University of South Carolina for one year where she majored in Business Administration before transferring to York Tech in 1977.

She has consistently been an "A" student and has been named to the "Dean's List" at York Tech numerous times.

First employed at Rock Hill Printing and Finishing in 1974, after graduation from Rock Hill High School, Trina was assigned to Data Control as a clerk, reporting to Dolores Every. Promoted to Accounting Clerk in the Bleachery General Accounting Office, Trina reports to Wayne McCraw, manager.

She resides with her family in Rock Hill in the Daven-shire area.

—SUMMER IN THE PARK—

Rain Date: May 20

Joslin Park Opens 1979 Season On May 13th

Joslin Park is scheduled to open for the 1979 summer season on "Mother's Day", Sunday, May 13, according to Nancy Yongue, RHP&F employment manager and park supervisor.

On May 13, the park will be opened at 1:00 p.m. and will close at 9:00 p.m. Swimming will be permitted during the hours of 1:00 p.m. until 8:00 p.m., with qualified life guards on duty. Food and refreshments will be available at the park club house throughout opening day operating hours.

In the event of inclement weather, the date for the park opening will be one week later on Sunday, May 20, with the same operating hours and swimming hours in effect.

Following the opening on May 13, the park will be opened only on weekends for the remainder of the month of May. These dates are: Saturday and Sunday, May 19 and 20 and Saturday and Sunday, May 26 and 27. Saturday operating hours will be from 11:00 a.m. until 9:00 p.m. and Sunday hours will be 1:00 p.m. until 9:00 p.m. Swimming on these dates will be permitted from the time of park opening until 8:00 p.m., one hour before

park closing.

According to Dick Lovett, RHP&F Director, Personnel, "Past experience has shown that most activity at the park during the month of May occurs over the weekends. We attribute this to the fact that school is still in session with particularly family groups having only weekends for outings in the park."

Lovett also pointed out, "Further, it has been our policy to extend summer employment to students in the area, for available jobs at the park during the summer season. It has become increasingly more difficult to employ students for the many jobs such as life guards, grounds keepers, canteen workers, etc., until after the end of the school year and we wish to continue this employment policy."

On Friday, June 1, the park will resume its regular seasonal schedule of operating hours. The park will be open on Tuesday through Saturday each week from 11:00 a.m. and will close at 9:00 p.m. daily. On Sundays, the park will be open at 1:00 p.m. and will close at 9:00 p.m.

During park operating hours, swimming will be permitted from the hour of opening until 8:00 p.m., one hour before

the park closes for the night at 9:00 p.m.

The park will be closed on Mondays for general park clean-up and maintenance.

For the convenience of employees, plans are now underway to operate the park and all of its facilities on an expanded schedule of operating hours during the week of July 4th. Final details of the plans for the 4th of July week were not complete at BEACON press time, however, announcement of this schedule will be made in the near future.

The 1979 vacation shutdown period at the Bleachery spans the 4th of July period and has already been announced. Normal Bleachery operations will cease at 7:00 a.m. on Saturday, June 30. All normal schedules will resume at the Bleachery at 7:00 a.m. on Monday, July 9, 1979.

A seven-man inspection team headed by Tony Vaughan, plant engineer, completed their annual inspection of the park in early April. Taking part in the inspection with Vaughan were: Dick Lovett, Director, Personnel; Jim Funderburk, supervisor, Maintenance Planning and Scheduling; Bill Love, supervisor, Buildings and Grounds; Barney Nichols,

supervisor, Carpenter Shop; Lyle McClintock, supervisor, Yards and Sam Hudson, manager, Joslin Park.

The park was found to be in excellent condition by the inspectors and according to Funderburk, "We have already begun some of the general clean-up of the park and some of the minor repairs noted by the inspection team, such as painting, repairing, refurbishing, and adjustment of equipment. Since we found the park to be in such good condition, probably our biggest project will be the re-sanding of the beach area."

In preparing the recreation area for the summer season, it has become routine practice to repair any winter damage to the area, re-seed all lawn areas and add additional shrubbery as needed. Trees and existing shrubs are also pruned and doctored. A close safety inspection of play areas and equipment is made and both refurbished prior to park opening.

Last year, in readying the park for the 1978 season, a number of improvements were made. A new swimming float was installed in the swimming area, replacing the older float which had begun to show signs of deterioration. Also, the park-

area was expanded and paved parking spaces added to accommodate visitors to the park. The approach road to the boat landing was graded and new gravel put down and the dock area of the Marina overhauled.

The 17-acre recreation facility is maintained and operated on the shores of Lake Wylie for Bleachery employees, their families and friends. Use of the park on Saturdays, Sundays and holidays is limited to employees, their families and special guests. Any guests on these days must be accompanied by an employee who will be responsible for their identification and behavior.

A group using the park on Saturdays or holidays for picnics, family reunions, cookouts or swimming parties, must include at least one employee who will be required to make reservations for the use of park facilities.

Further, the employee will also be responsible for: identifying members of the group when they enter the park; for policing the area after use and for leaving the area in an acceptable condition.

Sam Hudson, park manager, may be contacted by telephoning 366-7800 or 366-9191 for information or reservations.

Rain Date: May 19

Management Outing Slated May 12 At Joslin

The 1979 Annual Bleachery Management Outing, previously known as the "Supervisor's Outing" has been scheduled for Saturday, May 12 at Joslin Park on Lake Wylie, with festivities getting underway at 11:00 a.m.

In the event of bad weather, the alternate date for the outing has been set for the following Saturday, May 19. According to Jack Howison, arrangements committee chairman, if the event is rained out on May 12, the secondary date of May 19 will stand, "rain or shine."

Nothing hampered the fun and relaxation for more than 250 active and retired Bleachery supervisors last year, when they convened at Joslin Park on May 13 for their annual hoe-down. One old timer blamed the date for the fickle weather on the "13th" last year - cool breezes, fair weather, mist, light showers, toad-strangling downpour topped off by beautiful sunshine.

According to Howison, attendance again this year is expected to be in excess of 250 retired and active supervisors taking part in the day's events with representatives from other divisions of M. Lowenstein and Sons.

Hot dogs, chili and soft drinks will be available all day, with the big meal climaxing the day at 5:00 p.m. The menu calls for steak, baked potatoes, salad, rolls, tea and coffee.

More than a dozen games have been arranged by the committee with the traditional softball championship game, between teams from the "North End" and the "South End" of the plant launching the day's activities at 12:00 noon.

Last year, the ball game was going along just nicely. The "South End" was leading the "North End" when, in the bottom of the sixth inning, rain washed up and out teams and the ball game.

Hours of "Rhubarb" followed in the club house. The game was scheduled for only 7 innings . . . "South End" was leading when the game was called in the bottom of the 6th . . . "South End" had left the field when the rains came . . . and the "North End" stayed put. . . . Was it a ball game? . . . Did the "South End" win? Did the "North End" lose? . . . The situation is still in grave doubt.

An abundance of prizes is in store for the guests, with a portable television set as the Gate Prize and a broad selection of other prizes to be won in drawing contests and games. Awarding of prizes will begin at 4:00 p.m. with Aquille M. Hand acting as master of ceremonies.

Joslin Park

Operating Hours

Tuesdays thru Saturdays: Park opens at 11:00 A.M. Closes at 9:00 P.M.

Sundays: Park Opens at 1:00 P.M. and closes at 9:00 P.M.

Mondays: Park will be closed for cleanup and maintenance.

NOTE: Swimming will be permitted during park operating hours until 8:00 P.M., one hour before park closing.

Joslin Park Telephone: (Sam Hudson, manager) 366-7800 or 366-9191.

(Editor's Note: Expanded July 4th schedule to be announced)

According to Howison, Putt-Putt Golf will begin earlier this year due to the apparent wide interest in the game. First tee-off has been slated for 1:00 p.m. with the last tee-off set no later than 3:30 p.m. "This should give ample time to complete the games and select the winners for awarding of prizes," Howison said.

Chairmen and committee members arranging the games for the 1979 Management Outing are:

Hole-In-One: Carroll Hester, Jr., and Phil Bowers.

Dart Game: Howard Vestal and W.T. Ramsey.

Peg Board (Ringer): Jack Addison and Nell Hoffman.

Shuffleboard: Ken Parsons and Earl York.

Basketball: W.B. Simpson and Dan Anderson.

Dollar Drawing: Judy Payne, Libber Crowder and Orene Oates.

Putt-Putt Golf: Sam Rhodes, Steve Branche, Mickey Thompson and Mike Whittle.

Strike Zone: Jim Lattimore and John Heustess.

Bingo: John Dudley, Bob Rayfield, Bob Lesslie and Fred Rogers.

Guessing Game: Hazel Boyd, Nancy Yongue and Martha Oates.

Food (Hot Dogs & Chili): Gene Faulkenberry, Bennie Williams and company.

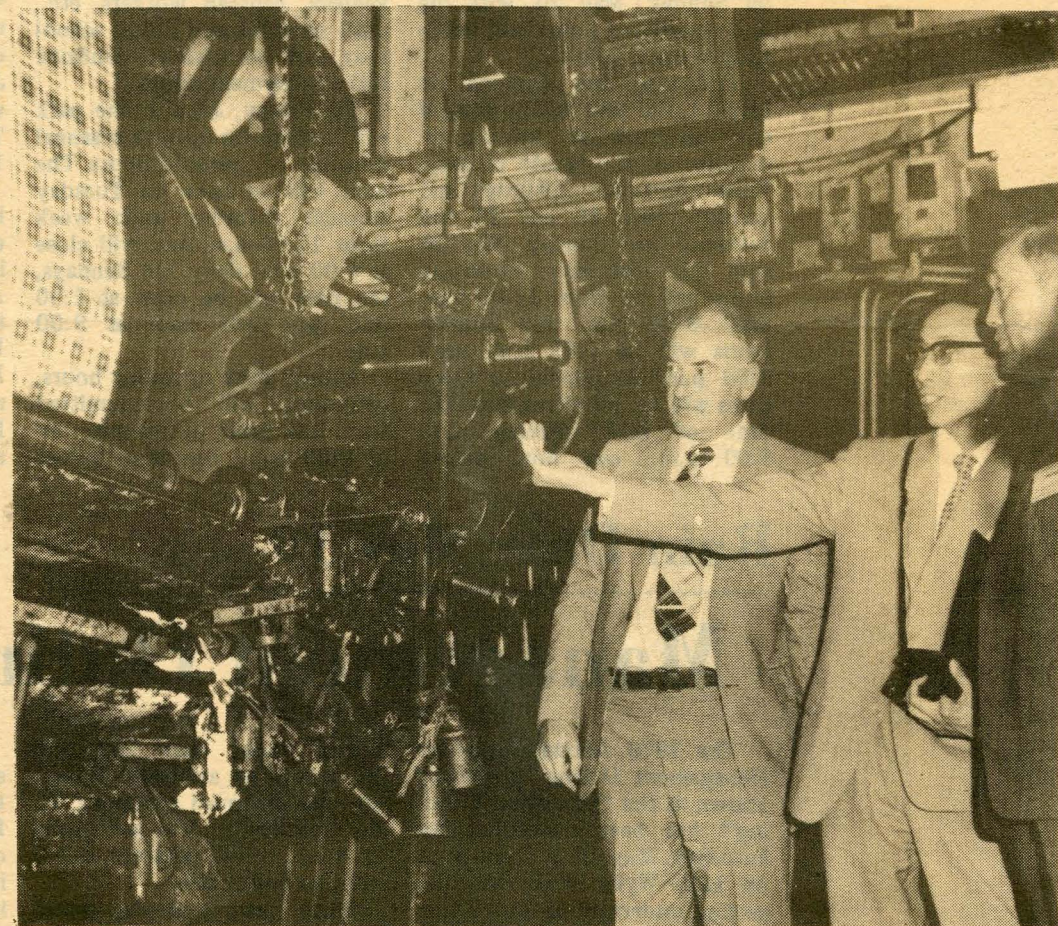
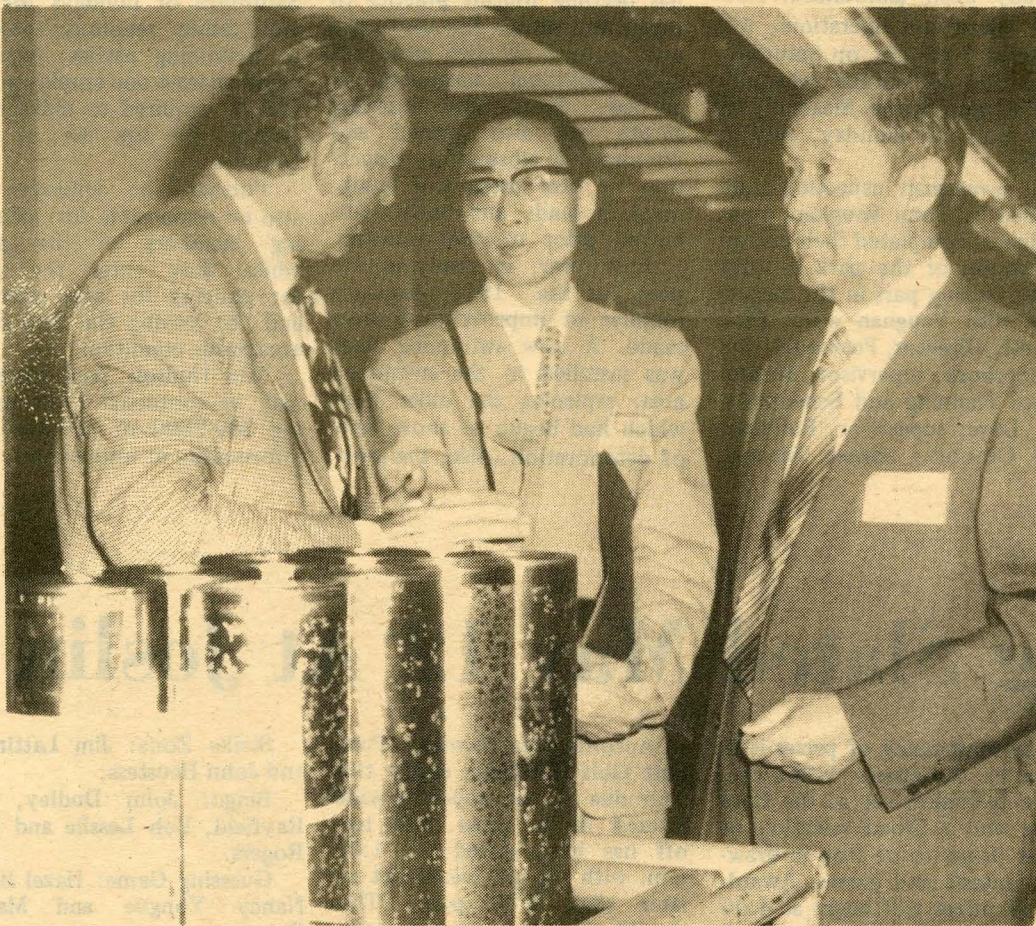
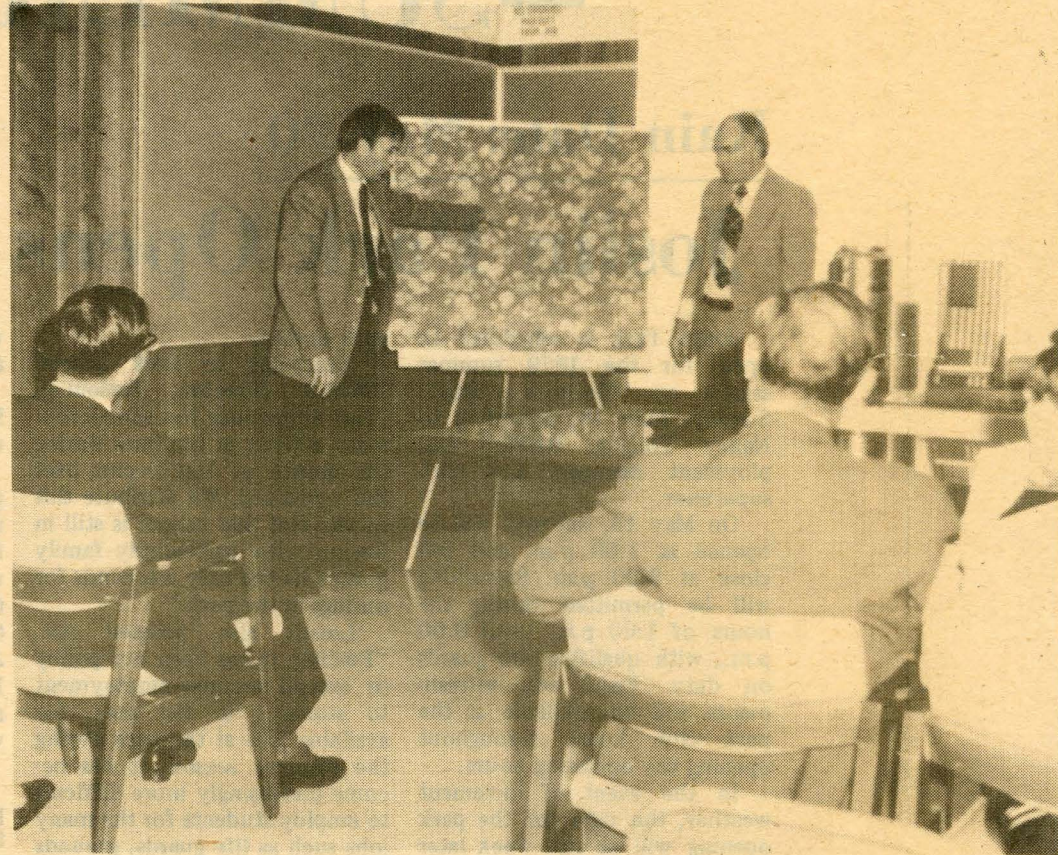
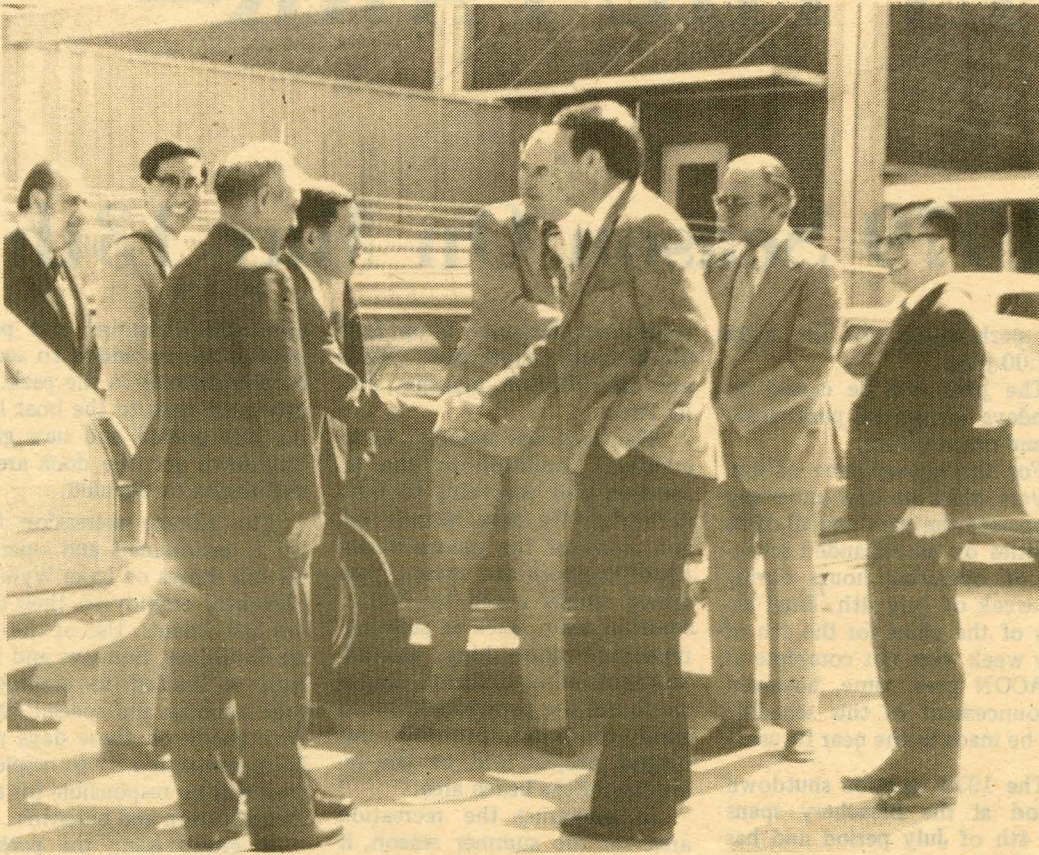
Steaks By: Macke Vending Supervisors.

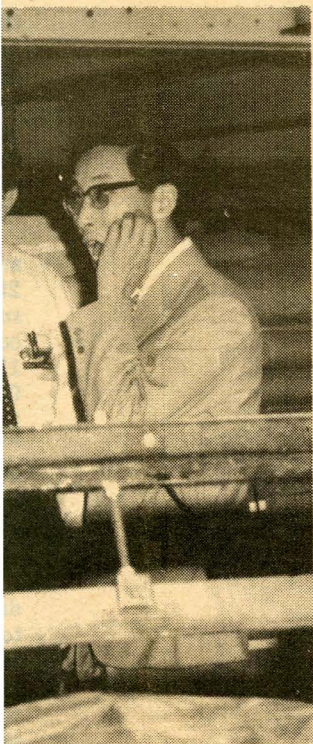
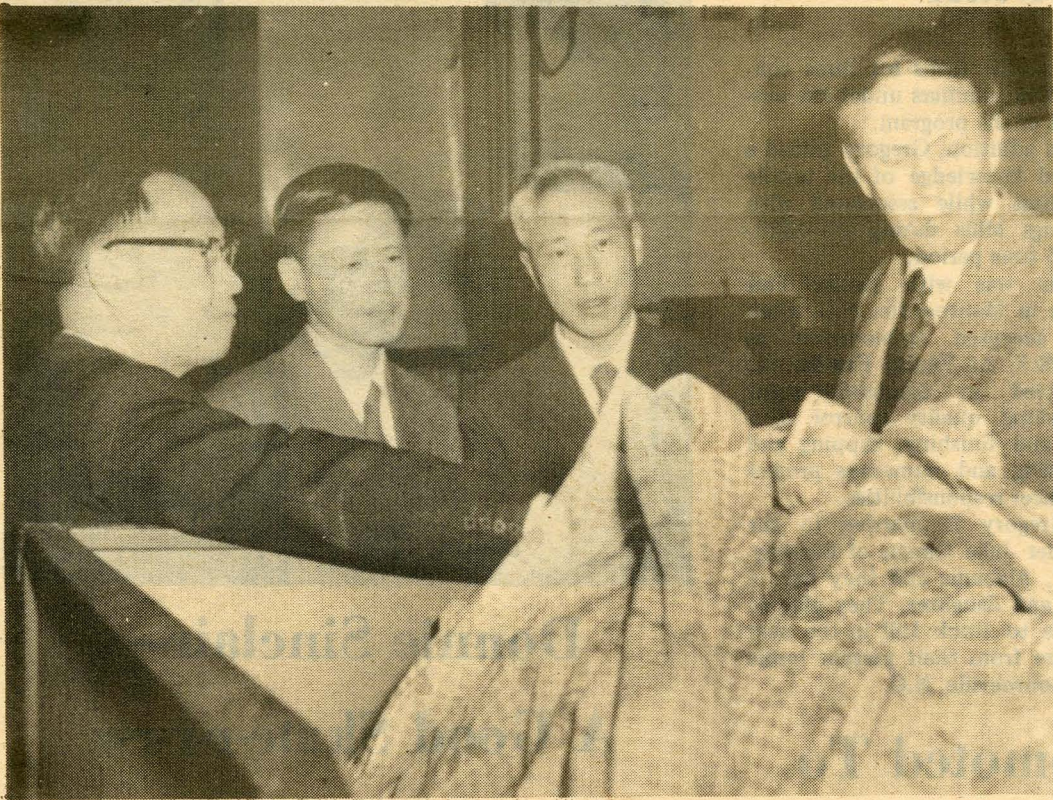
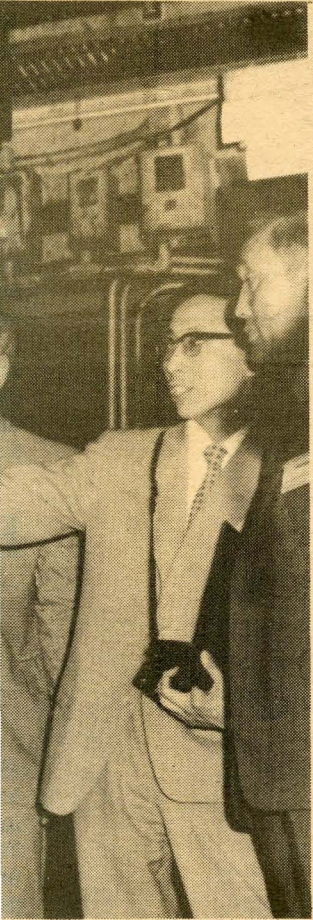
Prizes: Tony Vaughan and Barron Roddey.

Baseball: Gary Rayfield, Parker Downing, Dewey Mahaffey, Tom Williams, Eddie Craig and Mike O'Bryan.



... Bleachery 'Very Impressive' To Visiting Chinese Textile Group





..... Like other members of the visiting Chinese textile group, Li Goujie, Engineer with the Light-Industry Bureau, State Economic Commission, People's Republic of China, was also impressed with Bleachery products and packaging.



Lori C. Roach Winner Elks Oratorical Meet

Lori C. Roach, 16 year old daughter of Thomas Roach, Supervisor in the Bleachery Distribution Department is winner of the recent district three oratorical contest held at the Elks Lodge, 2025 Two-Notch Road in Columbia, S.C. The I.B.P.O.E. of W. of South Carolina, comprised of cities of Lancaster, Fort Mill, Chester, Winnsboro, Columbia and Rock Hill, sponsored the annual event.

Lori represented the B.P.O.E. Sterling Elks Lodge, 344 West Black Street in Rock Hill. As a first place contestant, she will now compete in the South Carolina State Contest to be held later in the spring in Florence, S.C.

A senior at Rock Hill High School, Lori plans to attend Winthrop College following graduation in May. She will major in Business Administration at Winthrop.

Lori is also one of the seven applicants presently vying for the 1979 Lowenstein Scholarship to be awarded in June. (See Lowenstein Scholarship story, page 2).

Lori's father, Thomas Roach, has been employed at the Bleachery for 25 years. First assigned to the Shipping Department, Thomas has been serving as third shift supervisor in the Distribution Department for ten years..

He and his wife, the former Louise Durham of Rock Hill, also have a son, Thomas L., who is presently a junior at the University of South Carolina where he is majoring in Chemistry.

Jody P. Gregory Joins Quality Control Staff



Jody P. Gregory

Jody P. Gregory, graduate of Auburn University, has joined the Quality Control staff of Rock Hill Printing and Finishing as Manager, Special Projects. Gregory will be reporting to Larry Vaughn, recently named to head the Bleachery Quality Control operation.

Jody holds a BS Degree in Textile Management he earned at Auburn in 1969. In 1972 he was awarded his Masters Degree in Textile Technology at the Institute of Technology at Charlottesville, Virginia.

Gregory brings with him to the Bleachery, extensive experience stemming from his sponsorship by West Point Pepperell and Riegel Textile under educational "Co-Op" programs while he was still attending college. Jody was sponsored by

the textile firms for three consecutive summers under the auspices of the program.

In addition, Gregory gained a broad knowledge of the textile business while associated with Springs Mills during the 1971-1975 time period.

He was with Vanity Fair Mills in Monroeville, N.C. when he accepted employment at RHP&F. At Vanity Fair he was involved in computer color matching, quality control, dyeing and finishing, napping and shearing and numerous project engineer responsibilities.

Gregory is married to the former Julia Gargus of Birmingham, Alabama and they have a son and daughter. They plan to move to Rock Hill in the near future from their present home in Monroeville, N.C.

Judy Payne Promoted To Color Control Chemist



Judy Payne

Judy Payne, formerly Color Control Chemist in the Bleachery Laboratory, has been promoted to Color Control Supervisor.

First employed at the Bleachery in September 1968, Judy was assigned to the Color Control Group in the Laboratory where she was promoted to Group Leader in 1971.

A native of Clover, S.C., she is a graduate of the University of South Carolina where

she majored in Biology with minor studies in Chemistry and Mathematics. She graduated from the university in June 1968 with a BS Degree in Biology.

Judy is married to Tommy R. Payne who holds the position of Machinist with the Petty Machine Company in Gastonia, North Carolina. They have a daughter, Whitney, age 7 years and reside in Clover, S.C.



Donnie Sinclair— A Good Skate-r-r-r

Donnie Sinclair, 15 year old son of Bobby Sinclair, right, Bleachery employee in the Calendars Department, poses with his Dad after completing 12 continuous hours of skating and logging 100 miles "distance" in a Skat-A-Thon for handicapped children.

Donnie initially won a Cale Yarborough shoulder patch and a pocket calculator in addition to "multiple blisters on both feet." Funds from the event, held at the Roll-A-Way Skating Rink in Lancaster, S.C., will come from pledges made by sponsors of the more than 100 boys and girls who took part in the charitable event. All collections will go to the South Carolina Association for Retarded Citizens, a voluntary social action organization based in Columbia.

Bobby has been employed at the Bleachery in the Packing Department for over 23 years. He also has a son, Jerome, employed at the Bleachery, as a color mixer in Screen Print.

Donnie and his skating cohorts will get the word in the near future as to the winner of the event, just as soon as collections are completed and tallied. Donnie said, "The winner really doesn't matter, we were all skating for the kids who couldn't skate."

Pity The Editor

Getting out this little paper is no picnic.

If we print jokes people will say we are silly.

If we don't, they say we are too serious.

If we don't print contributions we don't appreciate true genius.

If we clip things from other magazines we are too lazy to write them ourselves.

If we don't we are too fond of our own stuff.

If we do print contributions the page is filled with junk.

If we make a change in other peoples writeups we are too critical.

If we don't we are asleep.

Now, like as not, someone will say we swiped this from some other magazine . . . WE DID.

RHP&F Service Clubs - May 1979

5 YEAR CLUB

DEPARTMENT ANNIVERSARY DATE

Ruby R. Alexander	Quality Control	5-1-74
William R. Cullum	Quality Control	5-1-74
Rosie M. Patterson	Print	5-1-74
Frank W. Baxter	Engraving	5-6-74
Geraldine Dixon	Laundry	5-7-74
Mary D. Sanders	Screen Print	5-7-74
Herbert Barnette	Grey	5-14-74
Robert H. Neely	Screen Print	5-14-74
Jimmy M. Fox	Coating	5-20-74
Deborah L. Arant	Laboratory	5-20-74
Larry G. Craig	Packing	5-22-74
Thomas Durham III	Print	5-28-74
George M. Harris	White	5-30-74
William F. Chandler, Jr.	Print	5-30-74

EDITOR'S NOTE: Employees who have recorded 6-7-8-9 service will automatically become members of the 5 Year Club on the anniversary date of their employment. They will be presented with the Five Year Service Award under the new Corporate-wide Service Award Program.

(5 Years of Service)

Robert L. Blake	Screen Print	5-1-73
Joe Lewis, Jr.	Packing	5-3-73
Phillip Jackson, Jr.	Color	5-8-73
Charles H. Gardner	Packing	5-8-73
Fanny J. Adkins	Packing	5-8-73
Mary E. Miller	Packing	5-11-73
Nancy L. Wells	Screen Print	5-11-73
Charlie Hedgepath	Rayon	5-14-73
Olin G. Connell	Print	5-15-73
Mary P. Hemphill	Print	5-15-73
Lucille C. Copeland	Packing	5-15-73
Bobby R. Faile	Coating	5-21-73
Annie L. Anderson	Screen Print	5-23-73
Ola M. Rawlinson	Coating	5-23-73
Norma J. Blackmon	Grey	5-25-73
Thomas W. Carpenter	Print	5-28-73
Linda D. Adkins	Rayon	5-28-73
Wilbert Barber	Plant Services	5-28-73
Johnny Minton	White	5-29-73
Tyrone Miller	Nappers	5-31-73

(7 Years of Service)

Gary K. Richardson	Screen Print	5-2-72
James W. Benfield	Agers	5-3-72
Willie F. Hemphill	Soapers	5-4-72
James J. Thompson	Screen Print	5-8-72
James B. Hunt	Packing	5-22-72
Barbara W. Munn	Laboratory	5-24-72
Ossie A. Beckham	Dye	5-25-72
William M. Judge	Agers	5-25-72
Sophie R. Jones	Packing	5-30-72

(8 Years of Service)

Belton Caulder	Screen Print	5-10-71
Frank E. Brice	Frames	5-11-71
Danny R. Chapman	Systems	5-17-71
Marie W. Craig	Accounting	5-20-71
Charles A. Hinnant, Jr.	Screen Print	5-20-71
James D. Workman	Print	5-27-71

(9 Years of Service)

Billy M. Thomas	Print	5-4-70
Phillip B. Mitchell	Color	5-14-70
James E. Minor	Engraving	5-14-70

10 YEAR CLUB

Pettus Roseborough	Print	5-5-69
James D. Broome	Mechanical	5-5-69
Jerry D. Hill	Packing	5-12-69
Elma L. Harvey	Grey	5-19-69
Betty B. Catledge	Print	5-19-69
David B. Turney	Distribution	5-29-69

15 YEAR CLUB

W. J. Black	Mechanical	5-4-64
-------------	------------	--------

20 YEAR CLUB

Robert J. Warmoth	Screen Print	5-4-59
-------------------	--------------	--------

25 YEAR CLUB

William F. Bowers	Distribution	5-3-54
-------------------	--------------	--------

30 YEAR CLUB

None.

EDITOR'S NOTE: Employees who have recorded 31-32-33-34 years of service will automatically become members of the 30 Year Club on the anniversary date of their employment. They will be presented with the 30 Year Service Award under the new Corporate-wide Service Award Program.

(31 Years of Service)

Marvin F. Sexton	Print	5-3-48
Ernest R. Williams	Rayon	5-12-48
Preston E. Ramsey	Packing	5-12-48
Mary J. Cabaniss	Accounting	5-12-48
James L. Funderburk	Mechanical	5-14-48
Estelle M. Strait	Open Stock	5-17-48
Kathleen C. Mull	Packing	5-17-48
B. M. Alexander	Rayon	5-25-48
Leila T. Moss	Packing	5-21-48
William H. Featherstone	Packing	5-24-48
Alline D. Dease	Packing	5-24-48
A. Alexander, Jr.	Print	5-25-48

(32 Years of Service)

Junior B. Stagle, Jr.	Color	5-8-47
William R. Johnson	Color	5-12-47
Thomas Larmer Peay, Jr.	Power Plant	5-19-47

(33 Years of Service)

Jesse W. Reeves	Packing	5-15-46
Henry G. Jordan	Print	5-27-46

(34 Years of Service)

Carl Green, Jr.	Soapers	5-8-45
-----------------	---------	--------

35 YEAR CLUB

Lewis J. Alexander	Frames	5-1-44
Ira Witherspoon	Stock Room	5-1-44
Doris K. Mather	Packing	5-2-44

40 YEAR CLUB

None

EDITOR'S NOTE: Employees who have recorded 41-42-43-44 years service will automatically become members of the 40 Year Club on the anniversary date of their employment. They will be presented with the 40 Year Service Award under the new Corporate-wide Service Award Program.

(41 Years of Service)

None.

(42 Years of Service)

None.

(43 Years of Service)

James C. Hartsell	Print	5-27-36
-------------------	-------	---------

(44 Years of Service)

None.

45 YEAR CLUB

None.

EDITOR'S NOTE: Employees who have recorded 46-47-48-49 years service will automatically become members of the 45 Year Club on the anniversary date of their employment. They will be presented with the 45 Year Service Award under the new Corporate-wide Service Award Program.

(46 Years of Service)

Jeneice S. Diggs	Packing	5-1-33
------------------	---------	--------

(47 Years of Service)

None.

(48 Years of Service)

None.

(49 Years of Service)

None.

50 YEAR CLUB

None.

Rabies Alert On Again For SC

As during 1978, Bleachery employees are again alerted in 1979 to a new low country outbreak of RABIES in wild animals which has reached "alarming numbers" according to officials of the S.C. State Department of Health and Environmental Control.

"The disease was never found in Raccoons in South Carolina before 1972 and has been increasing ever since. Last year we identified 85 positive Rabid heads brought into the department's laboratories in Columbia," said Phillip M. Cooper, Director of DHEC's Division of General Sanitation.

"We have also found 26 positive cases of RABIES in bats and others in foxes, dogs and cats," Cooper stated. "No Rabid dog was identified in the state from 1962 until 1977. The chances of wild animals biting and infecting pets, especially hunting dogs, are very broad. We have one instance where a Raccoon had followed the dogs home from the woods and was found in their cage."

"Therefore we urge owners to get their pets inoculated as soon as possible," Cooper said. "Mass RABIES clinics, sponsored by the Department of Health and Environmental Control, and its 46 County Health Departments, are being held statewide."

THE YORK COUNTY HEALTH DEPARTMENT, DIVISION OF ENVIRONMENTAL CONTROL MAY BE TELEPHONED: 327-6183.

Should employees need additional information, assistance or help with strange-acting animals, call:

IN FORT MILL:

--Dr. C.C. Shackleton, Veterinary Clinic, Tega Cay Drive,-- 548-2590 or 1-704-334-8846.

IN ROCK HILL:

--Catawba Animal Clinic, Dr. R.J. Troutman, 2208 India Hook Road--366-1950 or 327-5712.

--Rock Hill Animal Hospital, Dr. William A. Diamandrous, or --Dr. S. Rice McMaster, 559 S. York Ave.--327-2238 or 328-3831.

--Ebenezer Animal Clinic, Dr. Watson H. Matthews, 1680 Ebenezer Road--366-1950 or 327-5712.

IN CHESTER:

--Chester Veterinary Hospital, Dr. James T. Anderson, Columbia Road--385-2515.

--Dr. M.D. Culpepper, Center Road, 385-5469.

--Dr. Linda A. Weatherall, Cornwell Road, 377-3805.

IN FORT LAWN:

--Fort Lawn Animal Clinic, Dr. William J. Lazenby, Highway 9--872-4538 or 872-4539.

IN YORK:

--York Animal Clinic, Dr. Thomas G. Dickson, Highway 321 Bypass--684-6031 or 684-9456.

March 31, 1979

Loans to Members (3,570)	\$7,955,984.83
Investments	2,602,816.49
Land and Building	11,251.00
Other Assets	64,286.47
Total Assets	\$10,634,338.79

Member Shares (4,820)	\$9,755,294.54
Accounts Payable	130,934.39
Reserves	740,961.00
Other Liabilities	7,148.86
Total Liabilities and Equity	\$10,634,338.79

"On Line Data Processing" of RHP&F Federal Credit Union daily transactions was instituted on schedule, Monday, April 2--but only partially and in face of an almost crippling handicap which slowed Credit Union record keeping operations considerably.

A major portion of the processing equipment, vital to the rapid and total function of the system, was caught in transit the latter part of March by the existing trucker's strike. As the BEACON went to press, the equipment was still loaded on the original shipper's truck and impounded in a holding yard or terminal in Winston-Salem, North Carolina.

Several attempts have been made by Credit Union officials to have the equipment transferred to another van and shipped by another trucker, but to no avail. They have been advised that under law, the equipment and allied materials could not be "tampered with" since they are housed within a "legally sealed van, still considered to be in transit."

In commenting on the situation, Alex Wolfe, Credit Union treasurer/manager, speaking on behalf of Credit Union officials said, "We realize that this delay has caused frustration and disappointments to both our members as well as our office staff, but the situation was brought about by circumstances beyond our control. We have been and are operating at the present time with only half of the On Line Data Processing equipment necessary to do the job. However, we have borrowed some additional equipment from other institutions to assist us during this emergency."

Wolfe also said that processing of accounts has been slowed considerably and Credit Union officials urgently request the understanding and tolerance of Credit Union members during the emergency period.

Conversion to the new and more modern rapid processing system was scheduled for completion over the weekend of March 31 and April 1 and was to have been placed in operation on April 2.

Total first quarter dividends paid to Credit Union dividends paid to Credit Union on March 31, 1979 amounted to \$149,118.74 deposited to member accounts.

The dividend was paid at the regular 6% per annum rate in addition to a bonus of $3\frac{1}{4}\%$ making the interest rate paid, $6\frac{3}{4}\%$ per annum for the period of January, February and March 1979.

At the end of the fourth quarter on December 31, 1978 the Credit Union deposited to member accounts a total dividend for the quarter - \$152,312.99. This dividend reflected the regular 6% per annum rate plus a bonus of a full 1% interest for the quarter, for a total of 7%.

It should be noted that the dividend of \$149,118.74 paid to member accounts on 31 March, 1979 does not include interest for the first quarter paid to members holding Share Certificates. These Share Certificates bear varying interest rates of: 6 3/4% for 1 year certificates; 7% interest for a 2 year certificate and 7 1/2% for 4 year certificates.

12 MONTHS-APRIL 1, 1978-MARCH 31, 1979

DEPARTMENT	MANHOURS	ACCIDENT INCIDENCE*
LABORATORY	56,221	0
OFFICE	608,920	1.0
COLOR	230,483	1.7
PLANT SERVICES	65,990	3.0
SAMPLE	50,458	4.0
YARD & LAUNDRY	49,517	4.0
OPEN STOCK	93,821	4.3
DISTRIBUTION	163,638	4.9
NAPPER	118,461	5.1
DYE	157,392	5.1
WHITE	213,591	5.6
FINISHING	395,095	6.6
ENGRAVING	86,507	6.9
PACKING	759,609	7.4
AGE & SOAP.	105,505	7.6
SCREEN PRINT	248,591	8.0
MECHANICAL	440,352	9.5
STOCK ROOM	20,709	9.6
GREIGE	115,374	10.4
PRINT	719,800	11.4
BLEACH	69,358	11.5
RAYON	105,918	13.2
STRIKE OFF	14,144	14.1
POWER	61,976	16.1
TOTAL	4,952,200	6.9

*Accident Incidence is the number of accidents that require treatment by a physician, per 100 employees per year.

The National Safety Council and the Department of Labor (Federal and State), have adopted this means of measuring safety performance. Accident Incidence is considered to be more meaningful than Lost Time Accidents.

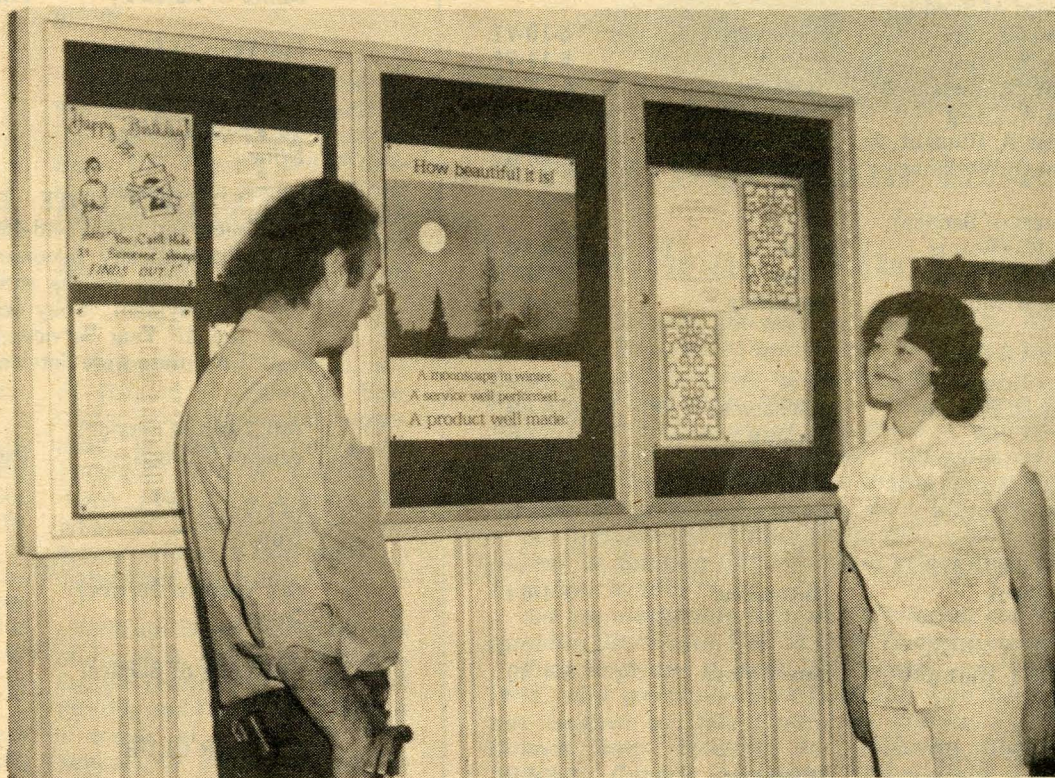
A total of 22 new bulletin boards have been installed throughout the Bleachery, to be used for communicating special notices to employees. Postings on the boards will also include employee birthdays, plant service anniversaries and other news items of interest to the employee.

Department managers have

been furnished keys to the bulletin boards and will be responsible for posting birthday and anniversary information. Posting of all other notices, inclusive of news items of interest will be the responsibility of the Industrial Relations Department.

Built by the Claridge Com-
pany of Harrison, Arkansas,

the boards are all of uniform size and are made of heavy duty frosted aluminum and measure 3 feet high, 6 feet in length and 4 inches deep. Each board contains three separate compartments with individually hinged, lock-type glass doors and interiors of dark, non-reflective surfaces.



BETTER COMMUNICATIONS MEDIA - Jimmy Joy, left, of the Bleachery Carpenter Shop discussed the newly installed Bulletin Board in the Industrial Building, with Lynette King, RHP&F Personnel Department. Twenty two similar boards have been installed throughout the Bleachery.