

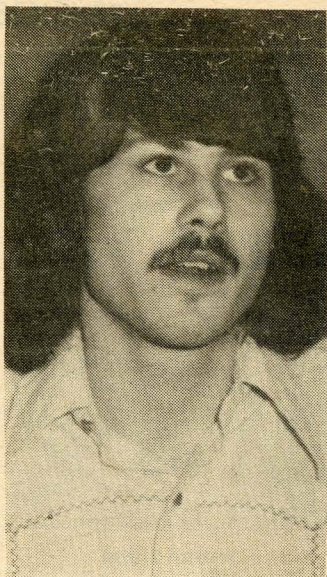


Bleachery Beacon

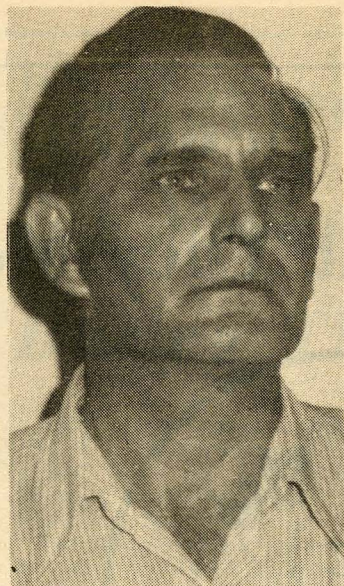
4-1976

Bleachery Beacon - April 1976

Rock Hill Printing and Finishing Company



Eddie Ferguson



Willie A. Worley

Worley And Ferguson Suggestion Winners

Two winners emerged from a list of 33 suggestions submitted by the Bleachery Employee Suggestion Program (ESP) Committee, during March.

They were, Willie A. Worley, Grey Department and Eddie A. Ferguson, Color Shop. Worley was awarded \$15.00 for his suggestion and Ferguson was awarded \$10.00.

Ben Cromer, Executive Assistant and ESP committee chairman said, "A total of 33 suggestions by employees were placed before the committee at its initial selection meeting. Two were adopted by the committee and eleven other suggestions were deemed worthy of consideration for adoption, but were deferred to a later date, pending investigation of feasibility or the need for more pertinent information upon which to base a decision."

"Of the remaining twenty suggestions, most of which were good suggestions, a few were eliminated as being 'frivolous' or 'prankster' type suggestions. The remainder merited looking into, but were found to be of no value to the company nor to the employees."

Worley suggested reducing the amount of tape presently used to secure paper covering on cloth received from Limestone Manufacturing and Ferguson suggested color identification signs be located above meters in the color shop.

In addition to selecting the first winners, the committee adopted a plan to award a colorful 5 1/2 inch coffee mug to each employee,

who submits a suggestion worthy of consideration by the ESP committee. The mug will be presented to the employee by the committee, not as a prize, but as a token of appreciation for taking an active part in the suggestion program. The mugs bear colorful bicentennial designs and denote the current ESP program.

Cromer said that a number of submissions to the ESP committee concerned the now defunct "I.Q. PROGRAM". Winners in the old I.Q. Program were announced and awards given, during the three months of its operation. However, the program was cancelled at the end of these first three months, due to lack of employee participation.

A grand prize or "sweepstakes" drawing was to have been held among I.Q. winners, at the end of the first six months period. Since the end of the program came after only three months, this six-month "sweepstakes" drawing was never held.

Cromer stated that, "In fairness to all concerned, the current ESP Committee has adopted a plan whereby all previous winners in the old I.Q. Program will be included in the first grand prize drawing of the current ESP program, to be held in July of this year."

Previously announced winners in the I.Q. Program, who will be included in the July drawing, are: O.C. Edwards, Calendars; Betty Nelson, Print Swings; S. Dickson, Sample; George Macky, Sanforizers; R.C. Elkins, White; Herman Dunn, Calendars and James E. Bigham, Jr., Rayon.



EMPLOYEES SUGGESTIONS RECOGNIZED-Each Bleachery employee submitting a suggestion worthy of consideration by the operating committee, of the Employee Suggestion Program (ESP), will receive a unique coffee mug in recognition of their participation. The 5 1/2 inch high mug, bears colorful bicentennial designs and denotes the current ESP program, launched in February.

First Quarterly Dividend

C. U. Pays \$95,687 In Dividends

For the first time in its 19-year history, the RHP&F Federal Credit Union began paying Quarterly Dividends to its members on March 31, at the annual rate of 6%. In addition, a 1/2% "bonus" was tacked on to the new dividend, bringing the annual rate to 6 1/2% for the first 90 day period of 1976.

Total dollar amount of this first quarterly dividend was \$95,687.64, inclusive of the 1/2% "bonus" payment.

In the past, the Credit Union paid dividends up to the 6% annual rate, semi-annually, or at the end of every six months period.

According to Alex Wolfe, Credit Union treasurer/manager, "Officers of the Credit Union elected to adopt payment of the 6% per annum dividend, payable quarterly, because they felt that

such payment would be of more benefit to the members than the 6% semi-annual payment."

Under the new dividend payment plan, interest paid at the end of a quarter, if left untouched by the depositor, will be part of the amount still on deposit at the end of the succeeding quarter, upon which the 6% annual interest payment will be based.

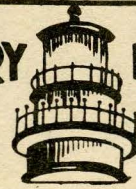
Concerning the 1/2% "bonus" payment, Credit Union officials are hoping that it will be possible to continue the 1/2% bonus throughout the year, adding it on to each quarterly dividend, as in March.

However, continuation of this bonus payment, will largely depend upon members using the credit Union for their savings and borrowing needs.

The next quarterly dividend is scheduled for payment on June 30.

BLEACHERY BEACON

Published By Rock Hill
P.O. Box 10272



Printing & Finishing Co.
Rock Hill, S.C. 29730

Volume 7, Issue 3

April 1976

ROCK HILL, S. C.

Joslin Park Launches '76 Season On Sunday May 16

The opening date for Joslin Park, for the 1976 summer season, has been scheduled for Sunday, May 16.

The opening date was announced following completion of the annual, pre-season inspection conducted during March. The 17 acre recreation facility located on the shores of Lake Wylie, is maintained and operated by RHP&F for its employees and their families and friends.

B. A. "Tony" Vaughan, Plant Engineer, headed the six-man inspection team composed of H. L. Ghent, masonry foreman, Mechanical Department; Barney Nichols, supervisor, Carpenter Shop; Harold Kennington, employment manager; Lyle McClintock, Yards supervisor and Sam Hudson, Joslin Park manager.

At the conclusion of the inspection, Vaughan announced, "A 9-hole, miniature ('Putt-Putt') golf course will be constructed in the area just above the kiddie pool location. We have surveyed the area and anticipated the course would cover approximately 100 x 100 square feet. Provided we face no unforeseen problems, the course will be

(Continued To Page 7)



"PUTT-PUTT" PLANS-B.A. "Tony" Vaughan, (kneeling), Plant Engineer, along with the 1976 Joslin Park inspection team, reviews drawings of the newly approved, 9-hole miniature ("Putt-Putt") golf course planned for immediate construction at the Bleachery recreation area.

Left to right are, standing: H.L. Ghent, masonry foreman, Mechanical Department; Barney Nichols, supervisor, Carpenter Shop; Sam Hudson, manager, Joslin Park; Harold Kennington, employment manager and Lyle McClintock, supervisor, Yards.

Leon Lowenstein, 1884-1976

The employees and supervisors of Rock Hill Printing & Finishing record with deep sorrow the passing of our beloved friend and benefactor, Mr. Leon Lowenstein.

For nearly seventy years, he had been a driving force in the growth and development of M. Lowenstein & Sons and a pioneer and major figure on the American textile scene.

In 1929, he built Rock Hill Printing & Finishing at a time when friends and experts advised against it. But, in the years to follow, his wisdom was proven when it became the largest printing facility in the world and M. Lowenstein & Sons one of the largest textile firms in the United States firmly entrenched in the top 500 corporations of America.

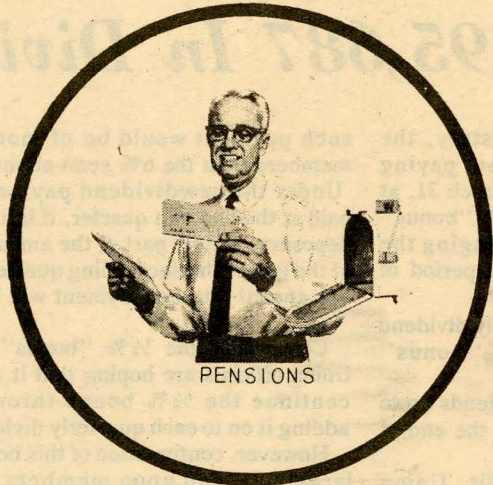
He served his company with distinction. Starting as an errand boy, he advanced to Treasurer, President, and Chairman of the board. Yet he never lost touch with his colleagues.

His talent for leadership was equaled only by his gift for human understanding. His many contributions to varied charitable causes were legend.

We honor the memory of our friend and colleague and his life-long commitment to his company and its people and extend to all members of his family our heartfelt sympathy.

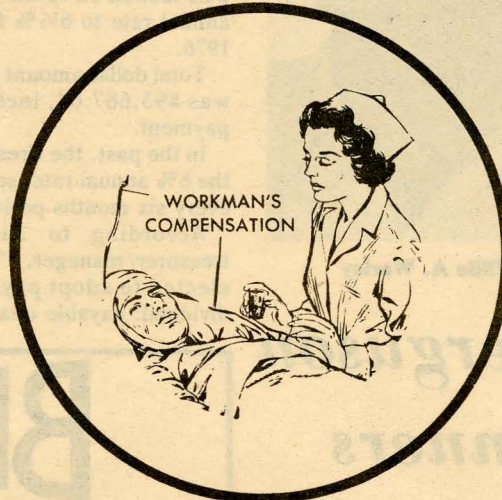
William H. Grier, Jr.
Vice President and General Manager

Fringe Benefits What They Mean



PENSIONS

Provides Monthly Income
After Retirement



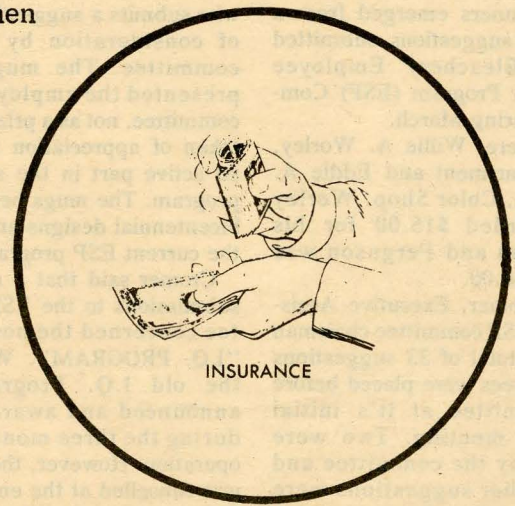
WORKMAN'S
COMPENSATION

Provides Income When
Injured on the Job



PAID HOLIDAYS

Pay When Not Worked--
Added Income When Worked

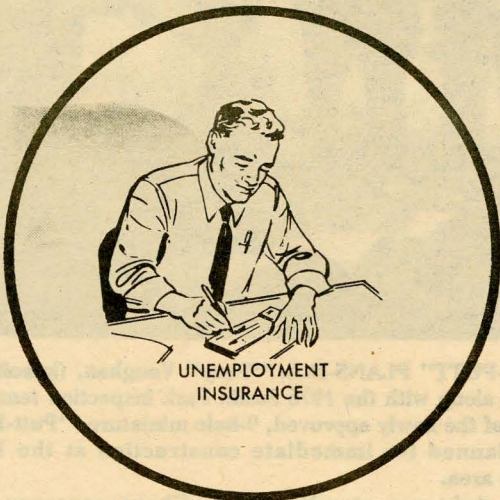


INSURANCE

Family Protection Against
Accidents and Sickness

Bleachery Benefits

1. Group Insurance
2. Pension Plan
3. Vacation Pay
4. Holiday Pay
5. Jury Pay
6. Bereavement Pay
7. Christmas Gift Program
8. Joslin Park
9. Scholarship Program
10. Tuition Refund Program
11. Social Security
12. Workman's Compensation
13. Unemployment Insurance
[Federal & S. C.]



UNEMPLOYMENT
INSURANCE

Provides Income
When Unemployed

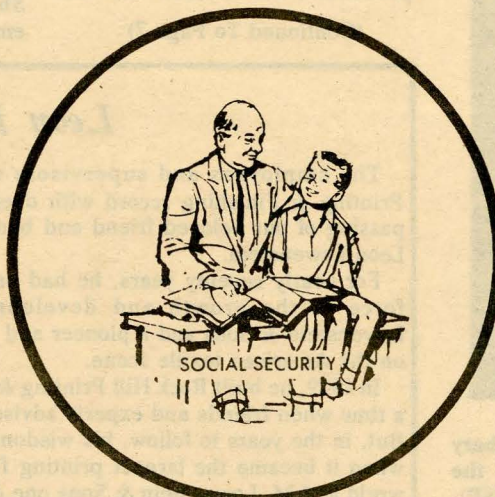
\$4,470,087

. . . was spent by Rock Hill Printing & Finishing in 1975 to provide the benefits above, for it's employees. This is over and above regular weekly wages.



VACATION PAY

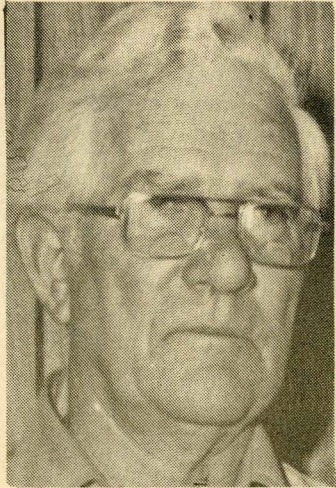
Funds for Fun



SOCIAL SECURITY

Provides Monthly Check
After Retirement

37 Retirees Worked 2.5 Million Manhours During Their Careers



James Sutton
25 Yrs.-Open Stock



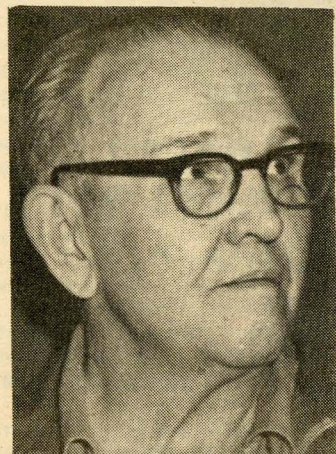
Annie E. Howle
20 Yrs.-Packing



Maurice Gordon
33 Yrs.-Packing



Alma Ratterree
31 Yrs.-Plant Nurse



Jerome Dubose
33 Yrs.-Print

Thirty seven employees with a total of 1,104 years employment at Rock Hill Printing and Finishing, retired or applied for retirement since January 1.

The group averaged 30 years and under normal conditions worked a total of 2,208,000 manhours, without counting overtime. Counting overtime, the total would easily approach 2.5 million manhours.

All are from the plant and represent a tremendous loss in experience and job knowledge.

Five of the group worked 40 years or more. They were: J. Newton Thompson, Calendars, 46 years; Fred Poole, Dye Department, 42 years; Leamon Adams, Packing, 41 years; John Bigger and Grady Watkins, Packing, 40 years each.

There are fourteen retirees who worked 30 years or more.

Seventeen of the group retired without any advance notice to the BEACON, and as a result, were unavailable for photographs. A list of these, along with their department and years of service are listed below:

Joe Tidwell,
27 yrs.-Grey

William Farmer,
25 yrs.-White

Ernest Brewton,
20 yrs.-Packing

Saye Williams,
26 yrs.-White

Robert Gibson,
22 yrs.-Economy

Willie Starnes,
30 yrs.-Open Stock

Lumus Redick,
25 yrs.-Engraving

Herman Hedgepath,
30 yrs.-Bleach

Curtis Smith,
29 yrs.-Print

Norman Whitesides,
31 yrs.-Stock Room

Grady Watkins,
40 yrs.-Packing

Marian B. Goodson,
28 yrs.-Open Stock

Glenva B. Propst,
33 yrs.-Packing

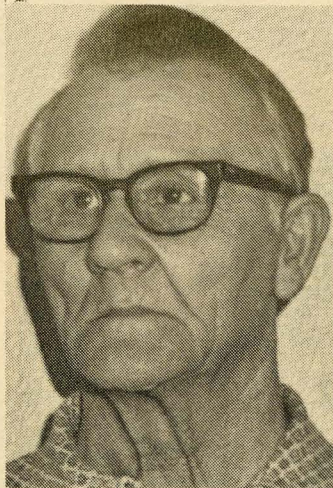
Mitchell J. Matthews,
31 yrs.-Calendars

Odell J. Johnson,
24 yrs.-Rayon

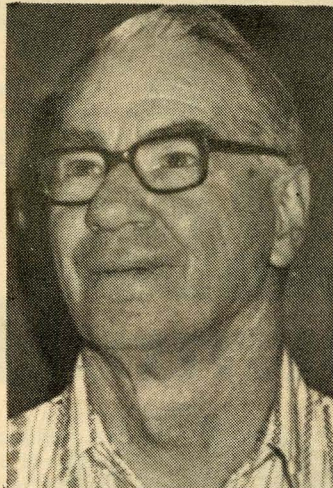
W.E. Helms,
35 yrs.-Dye

Carolyn B. Dunlap,
26 yrs.-Packing

Hazel M. Green,
30 yrs.-Packing



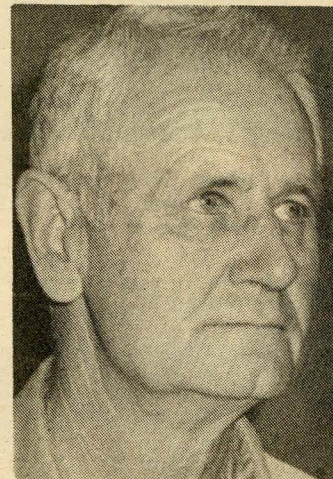
Gus C. Catledge
26 Yrs.-Rayon



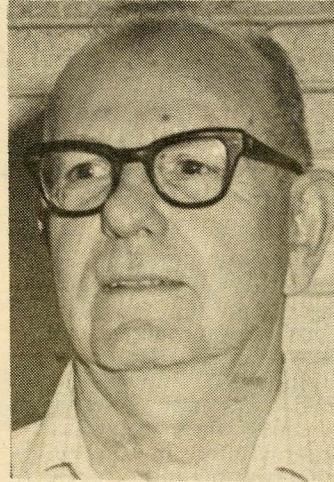
J. Newton Thompson
46 Yrs.-Calendars



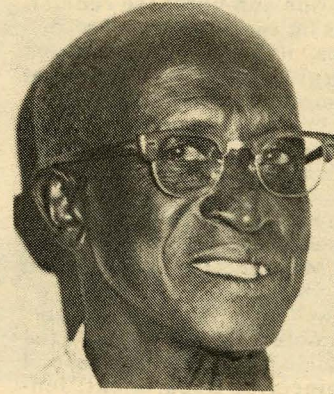
Jerry Boyd
25 Yrs.-Custodial



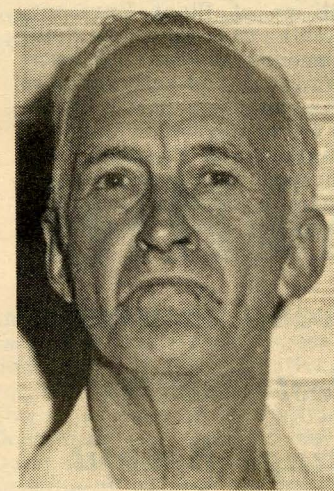
Nathan Stone
28 Yrs.-Engraving



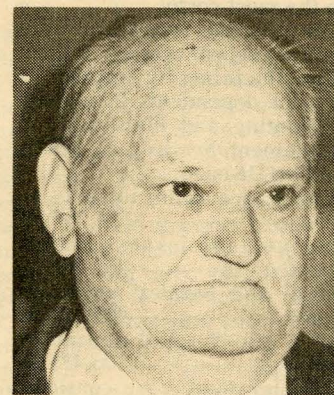
John Biggers
40 Yrs.-Packing



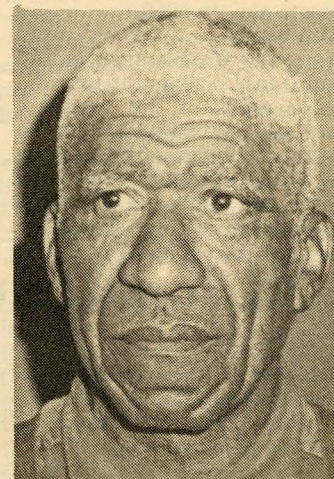
George Wallace
25 Yrs.-Yard



W. H. Sherer
36 Yrs.-Rayon



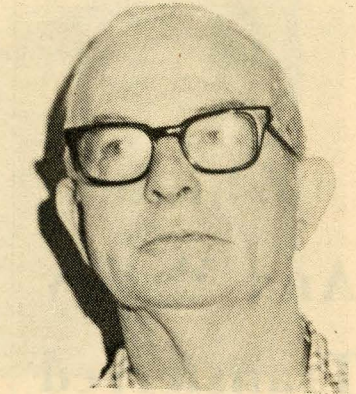
Paul Crump
34 Yrs.-Frames



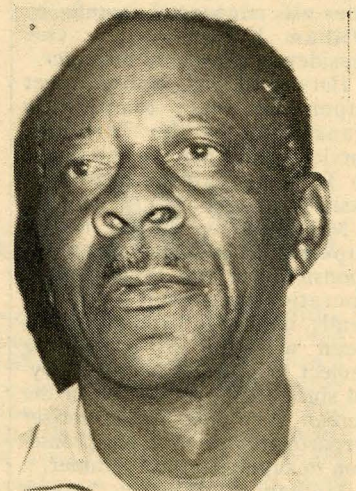
Louis Brown
20 Yrs.-Laundry



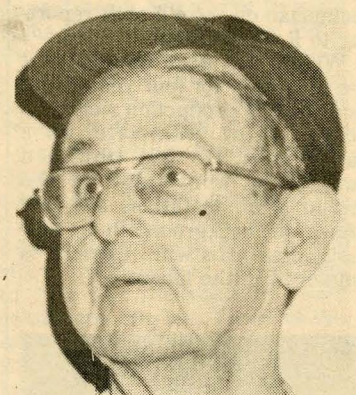
Dixie Adams
21 Yrs.-Packing



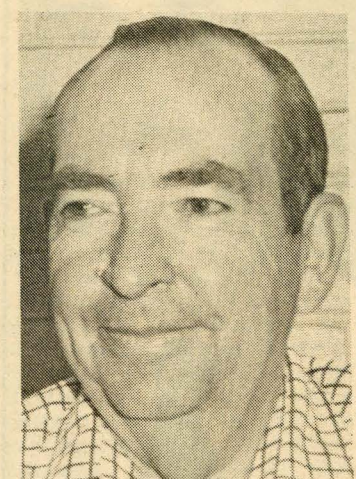
Fred Poole
42 Yrs.-Dye



Willie Caldwell
30 Yrs.-Mechanical

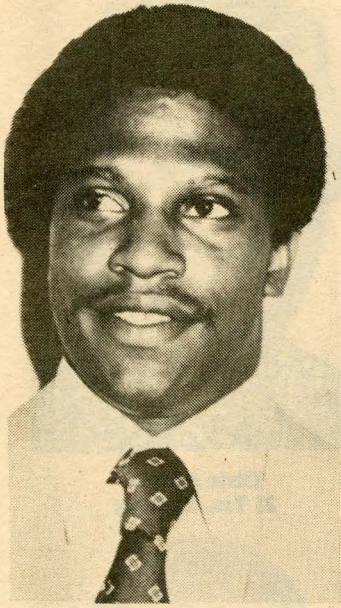


Otis Green
36 Yrs.-Bleach



Leamon Adams
41 Yrs.-Packing

Jenkins, Vaughan Get New Jobs In Engineering Reorganization



Harvey McCoy

Whittle And McCoy Transferred

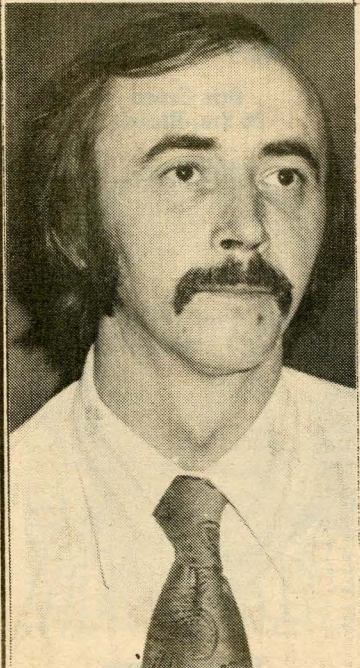
The transfer of two supervisors to jobs involving new responsibilities was announced recently by William H. Grier, Jr., vice president and general manager.

Harvey McCoy, transcolorizer supervisor, was temporarily transferred to the Technical services staff where he will report to T. J. Latham as a project assistant.

McCoy is one of the newer supervisors and had been responsible for the transcolorizer operation on second shift. Recently, on loan to Latham, he has been working on a routing project. McCoy has been employed since 1969 and worked in the Screen Print and Transcolorizer Departments prior to his promotion to supervisor last summer.

Michael T. Whittle, screen print supervisor, was transferred to the Quality Control Department where he will be a technician on second shift reporting to R. C. Rayfield.

Whittle has been employed at the Bleachery for four years, first as an hourly production worker in Screen Print, then later as a supervisor. He has obtained substantial knowledge of the screen print operations and will utilize this background in his new assignment. His wife, Patricia, is employed in the laboratory.



Michael Whittle

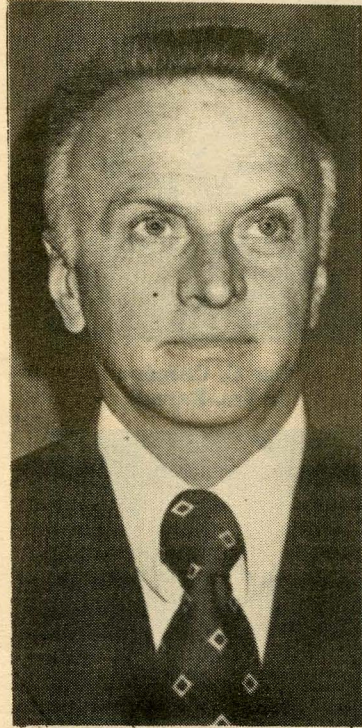
Promotions of W. T. (Buddy) Jenkins and B. A. (Tony) Vaughan were announced recently by William H. Grier, Jr., vice president and general manager.

Jenkins was named Director of Engineering where he will concentrate his efforts in the areas of engineering planning, project engineering including development of capital plans and approving of requests for appropriation and purchase requisitions for capital or capital-related items, utilities engineering and energy conservation, technical engineering assistance, and coordination of engineering projects between Rock Hill Printing and Finishing and other ML&S locations.

In addition Jenkins will assume responsibility for supervision of the Mechanical Warehouse and the Stockroom from Boyce W. Harwell, who will thereby be able to more closely direct the expanding role of the Industrial Engineering Department. Jenkins will report to the general manager.

Vaughan assumes the responsibilities of Plant Engineer, reporting to Jenkins. All plant engineering personnel will report to Vaughan and references to maintenance and new construction will be directed to him.

Jenkins and Vaughan have both spent their entire working careers in the Bleachery Engineering Department, Buddy since



W.T. (Buddy) Jenkins

1947, and Tony from 1963. Both majored in Mechanical Engineering at Clemson University.

Jenkins is a native of Rock Hill and the son of the late Walter Jenkins.

He attended Rock Hill High Schools and Clemson University where he earned his BS Degree in Mechanical Engineering in 1943. Following graduation he served 3 years as an officer in the Air Force.

In 1946 and 1947 he was employed as a design draftsman by Glenn L. Martin in Baltimore.

In late 1947 he joined the Bleachery as a junior engineer. Seven years later he was promoted to assistant plant engineer and in seven more years (1961) he was promoted to Plant Engineer.

He is married to the former Claudia Summers of Orangeburg and they have three children.

Vaughan is a native of Union, S.C. and attended Union High School and Clemson where he majored in Mechanical Engineering after serving three years in the U. S. Army. Tony worked for REA Express while attending Clemson.

He was employed by Rock Hill Printing and Finishing on June 3, 1963 as a junior engineer and was named Assistant Plant Engineer in 1966.

He is married to the former Elizabeth Jenkins of Union, S. C. and they have two children.



B. A. (Tony) Vaughan

Group Insurance Most Popular Fringe Benefit

Group Insurance is the most popular of all fringe benefits. It is also the most costly.

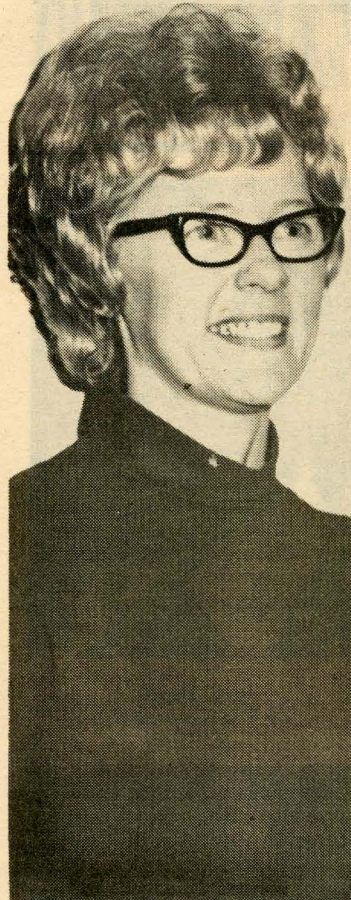
Last year the group insurance program paid out over one million dollars in claims by employees and their dependents from Rock Hill Printing and Finishing and Management Services & Transportation Division.

Life Insurance claims totaled-----	\$138,787.50
Accident and sickness claims amounted to-----	65,545.00
Medical and Surgical employee expenses-----	482,704.54
Medical and Surgical dependent expenses-----	306,435.49

Although there were considerable less employees covered in 1975, the amount of claims more than doubled the amount paid out 15 years ago, in 1960.

Much of this can be traced to inflation of Hospital Costs and surgical fees during this period.

Regardless of the reasons, insurance costs have reached a dangerously high mark that soon may be out of reach of Industry groups and individuals, unless there is some real soul searching.



Delores Every Supervisor, Data Control

Mrs. Every And Boyd Appointed Supervisors

The promotions of Mrs. Hazel C. Boyd and Mrs. Delores W. Every to managerial positions were announced recently by William H. Grier, Jr., vice president and general manager.

Hazel Boyd becomes Supervisor, Distribution Office, reporting to E. D. Wilson, Manager, Distribution Department. Delores Every has been appointed Supervisor, Data Control, reporting to D. F. Newport, Director, Systems and Scheduling.

Both Boyd and Every have held lead positions, responsible for a group of clerical employees. Boyd joined the Bleachery in 1936 as an office clerk. In 1944 she became a group leader in the Shipping Department and for thirty-two years worked closely with Hubert Whitton and M. B. Dunlap in that capacity. She was married to the late J. Harry Boyd who was employed here for many years prior to his death in 1975.

Every was employed in 1962 in the general office and operated the teletype machine. Later, she became a secretary, then in 1974, Clerical Scheduling Coordinator. With the creation of the Systems

and Scheduling Department in 1975, Every became a group leader in charge of several clerical functions. She now assumes the additional responsibility of the data entry operation.



Hazel C. Boyd Supervisor, Distribution Office

National Guard Summer Encampment Dates Set

National Guard units from the tri-county area have been scheduled for their annual Field Training exercises at Fort Stewart, Georgia for June 5 thru 19 and on August 7 thru 21.

Sites, dates, units and locations for the 1976 encampments, announced early this month, are

as follows:
 HHC, 4th Bn, 118th Infantry, Union, S. C.-Ft. Stewart, Ga., June 5-19.
 HHC, (DETI)2nd Bn, 263rd Armor, Rock Hill, S. C.-Ft. Stewart, Ga., June 5-19.
 Det. 1, HHC, 2nd Bn, 263rd Armor, York, S. C.-Ft. Stewart,

Ga., June 5-19.
 Co. a, 2nd Bn, 263rd Armor, Ft. Mill, S. C.-Ft. Stewart, Ga., June 5-19.
 Co. C, 2nd Bn, 263rd Armor, Clover, S. C.-Ft. Stewart, Ga., June 5-19.
 Co. C, 2nd Bn, 263rd Armor, Clover, S. C.-Ft. Stewart, Ga.,

June 5-19.
 Spt. Co., 2nd Bn, 263rd Armor, York, S. C.-Ft. Stewart, Ga., 5-19 June.
 HHB, 3rd Bn 178th Field Artillery, Lancaster, S. C.-Ft. Stewart, Ga., August 7-21.



THE AMAZING EIGHT-With tenures of employment ranging from 5 to 44 years, totalling 237 years of recorded longevity between them, these eight ladies make up the Billing Department of the Lowenstein Management Services Center. All

except one, were members of the original Bleachery Billing Department and transferred with the operation, when it was moved to MSC in April, 1967. Reading from the left, 'clockwise' around the room are: Rebecca Russell, supervisor, with 35 years

longevity; Mildred Giles, 39 years; Lucille Hardin, 33 years; Freida Sutton, (partially obscured), 14 years; Mary Stephenson, 44 years; Mary Bell, 33 years; Anne Rayfield, 5 years and Mary Lyle, 34 years.

It's A Woman's World

Eight Women Handle Bills At MSC

"Bills! Bills! Bills!"-the universal chorus that rises across the country on the first of every month-would fall on deaf ears in the Billing Department of the Management Services Center.

For here, eight lovely ladies who make up the MSC Billing Department, could use the doleful wail as their battle cry as they perform the daily, monumental task of preparing, cross checking and dispatching, the mountain of bills, invoices and export documents for the thousands of customers of M. Lowenstein and Sons, Inc.

And they have been working at it for a total of 237 years-when individual employment Longevity ranging from 5 to 44 years, is tallied.

The atmosphere and the buzz of activity of the office in which they work, resembles that of the 'City Room' of a metropolitan newspaper-and yet, by contrast, their desks are arranged in school room, quadrangle fashion with seven of the eight facing the desk of the "headmaster"-(in this case, Rebecca Russell, Supervisor)-seated at the "front of the room." Eye contact with the supervisor and instant communication among the eight, appears as a keystone in their meticulous, yet rapid and successful endeavor.

Seated at desks facing "Becky" are: Mary Stephenson; Mildred Giles; Mary Lyles; Mary Bell; Lucille Hardin; Freida Sutton and Anne Rayfield.

Organizationally, the Billing Department is a vital part of MSC Order Processing Operations, under Director, Bill Estridge.

Prime responsibility of the department is maintaining the master billing records of the MLS Piece Goods Division. The number of invoices maintained in this area during 1975 alone, exceeded

more than 257,000 customer invoices which fell to responsible actions of the Billing Department. All corrections and credits against these invoices are also handled by the department.

In addition, during the normal working period of a single month, more than 6,500 billing, invoice and export documents rush across the desks of these amazing eight.

They are also responsible for issuing billings to outside customers for which the Bleachery does printing and they also produce all export and Canadian documents that are necessary to accompany shipments to the borders, according to requirements laid down by Customs Officials.

Over-the-counter, retail billings from Open Stock at the Bleachery are also controlled by this department, as well as all Sample Department billings of shipments from RHP&F.

Additionally this department produces export details that appear on invoices for overseas shipment and it controls all prepaid freight to customers.

Routine questions and inquiries concerning invoices rendered for the Piece Goods Division are also answered by ladies of this department.

All in all, invoices processed by the eight ladies of the Billing Department, represents in excess of over 200 million dollars transactions on a yearly basis.

Truly, the eight are amazing. Bill Estridge knows it. The company knows it. And there is a sneaking suspicion of such confidence in the office that-the ladies know it too.

The longest tenure-44 years employment in the Billing Department belongs to Mary Stephenson who came to work in the old Bleachery Billing Department in January, 1932. Two other

members of Mary's family work at the Bleachery, her sister, Lynette Crane, Production Control and her brother-in-law, Robert Cook, in the Packing Department. A native of Clover, S. C., Mary resides on Pickens Court in Rock Hill.

Mildred Giles came to the Bleachery Billing Department in 1937 and like seven others in the group, remained in that Department when it was transferred to the new MSC building in 1967.



Mary Stephenson
... 44 years longevity

She has now logged 37 years employment in the MLS operation. She too has relatives employed at the Bleachery, Faye Threatt, as sister, in the Packing Department and a sister-in-law, Daisy Garrison in the Sample Department. Mildred is a native Rock Hillian and lives with her husband William and their family at 929 Finley Road in Rock Hill.

Rebecca Russell, supervisor of the department, came to the Bleachery Billing Department in 1941, remained with the operation when moved to MSC and took over as supervisor in January, 1975 following the retirement of Bill Sims. "Becky", with 35 years employment in the department, has a brother, Sumpter Cornwall in the Bleachery Packing Department and three sisters-in-law employed at the Bleachery; Ruby Cornwall, Microfilm; Mary Cornwall, Shipping and Eloise Cornwall in Order Processing. Although well experienced in the process, Becky lets husband, Carl Russell, proprietor of Russell's Grocery Store "do his own billing", although she admits to rendering a bit of professional advice from time to time. Becky and Russell reside on Route 1 in Rock Hill.

Following the outbreak of World War II, Mary Lyle was employed at the Bleachery during 1942 in the office and later transferred to Billing. Mary has a continuous record of employment of 34 years. She has two sisters-in-law employed at the Bleachery, Jessie Lee Lyle, Inventory Control and Daphne Oates, Production Control. Her husband Wade is employed at the U.S. Post Office in Rock Hill and they reside at 621 South Confederate Avenue.

Mary Bell has been a member of the Billing Department for 33 years, having accepted employ-

ment in the Bleachery Billing Department in 1943. She too remained in the operation when it became part of MSC. Her brother Johnny Boyd works in the Bleachery Packing Department. A native of York, S. C., Mary resides on Deas Street, in Rock Hill.

Lucille Hardin also records 33 years as Credit Clerk in the department. She came to work at the Bleachery in January 1943. She and her husband, Ben, who is with the York Electric Co-Op reside with their two children on Route 1 in Rock Hill.

Freida Sutton, Comptometer Operator and Proof Reader, is almost the "junior member of the firm." Freida came into the Billing Department while it was still at the Bleachery, in 1962 and to date has recorded 14 years continuous service. Three of her relatives are employed at the Bleachery, an uncle, Bill Sturgis, in the Office; Elizabeth Edwards, an aunt in the Packing Department and a brother-in-law, Jimmy Sutton in Packing. Freida's husband Mack, is with the Catawba Asphalt and Paving Co. They reside with their five children in Fort Mill, S. C.

Ann Rayfield is referred to by the group as, "our mascot and junior member of the firm." Ann, a Comptometer Operator and Typist, says she can boast of only five years employment with the department, since 1971, but she's "working towards seniority." Three members of her family are employed at the Bleachery, her mother-in-law, Bessie Rayfield, Packing; and uncle, George Rayfield, in the Foundry and a sister-in-law, Sophie Jones in the Packing Department. She and her husband, J. C., who is with National Fence Company, live on Columbia Avenue in Rock Hill with their three children.

Goldberger Praises CU Officials

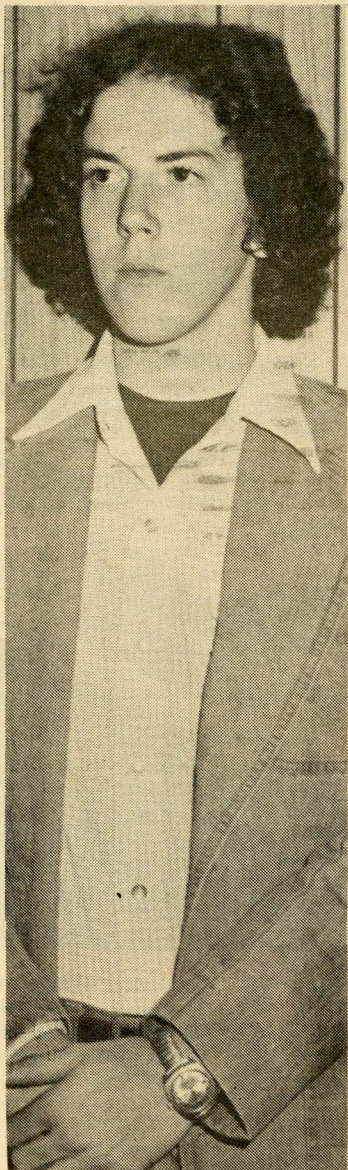
Edward Goldberger, vice chairman of the board of M. Lowenstein and Sons, Inc. and a director of the company, singled out the RHP&F Federal Credit Union during March, for praise and congratulations in a memorandum to William H. Grier, Sr., former Bleachery president and general manager. Grier is also a member of the MLS board of directors and a consultant at RHP&F since his retirement in 1971.

Goldberger stated in his memo, "I got a real thrill out of reading the annual report of the RHP&F Federal Credit Union and looking over the balance sheet of January 31, 1976. It seems a short time ago when the Credit Union was founded, and to think that now, the equity is \$7 million, is truly wonderful."

Goldberger was serving as Treasurer of MLS, a post he held for 22 years, when the Credit Union was founded 19 years ago.

His memorandum stated further, "I note that the union paid a 6% dividend on savings and that it refunded to borrowing members. 10% of the interest they paid to the Credit Union during the year. I also note that since organization, the Credit Union has loaned almost \$58 million!"

Goldberger concluded, "The fact that during 1975, share balances were up 12% over December 1974, is truly remarkable and I think that all, who have anything to do with the Credit Union, should be congratulated!"



Charles Maloney Tech Student

Two College Students Are Interns At Bleachery

Two college students from the local area, Charles Maloney of Rock Hill and James Austin from Chester, reported to the Bleachery during March as participants in a program of, "Supervised Internship in Business."

The basic intent of the unique student intern program, is to give students practical experience, "on the job", in the business world where they may utilize skills and knowledge acquired in the classroom.

At the same time, the intern serves the employer in a manner that is productive to the organization, being placed in a job with the firm that is commensurate with the student's future job expectations. Therefore, student interns will be paid for work performed during their temporary stay with the company.

Maloney, a senior at York Technical College, was placed on duty in the Industrial Engineering Department, reporting to Dewey Mahaffey, manager. Majoring in Industrial Engineering Technology at York Tech, Maloney will be tendered an associate degree in this field of study in June, 1976.

Under Mahaffey, Maloney was given a project assignment in the Grey Department, working in a prime interest area, on the receiving of greige goods. His mission is to perform studies regarding grey layout, methods and procedures, utilizing time



Jimmy Austin Winthrop Student

and motion studies as necessary. At the end of his tour of internship, he will develop recommendations which Mahaffey and members of his staff, will consider.

Austin, a Winthrop College senior, was assigned to the office of Industrial Relations, reporting to E. Ross Blew, vice president, public and industrial relations.

Presently majoring in Business Administration, Austin is sche-

duled to receive his BS Degree in May, 1976. He already holds an associate degree in Business Administration from York Technical College.

Austin's full endeavor will be concentrated in the administrative field of attendance reporting and control procedures. Working with all departments, he will render a study/report, along with recommendations to Blew, at the end of his tour.

Never Rides Alone

Puckett Commutes In Fairlane 'Fantasia'

Clarence Puckett, Finishing Department employee, never owned a Mickey Mouse hat. But he has made up for this childhood disappointment.

Puckett commutes daily to his Bleachery job from Union, S. C. in a 1965 Ford Fairlane who's outward appearance makes it unique and most unusual transportation-but colorful. Dubbed "Wonderful World of Color", it is adorned in dazzling, enamel colors, by a host of cartoon characters, particularly those created by the late Walt Disney.

Mickey Mouse dominates the hood. The Faireyland Castle covers the top and Snow White and Prince Charming are painted on the trunk, while Pinocchio, Donald Duck, Mr. Cricket, Doc, Dopey, Grumpy, Pluto, three little pigs, Brerr Fox, Elmer Fudd and others cavort through landscape backgrounds from the front bumper to the rear of the car-on both sides.

Clarence, who has worked at The Bleachery only a few weeks, usually gets to work a "little early" for the second shift and already, his car is becoming the talk of the parking lot.

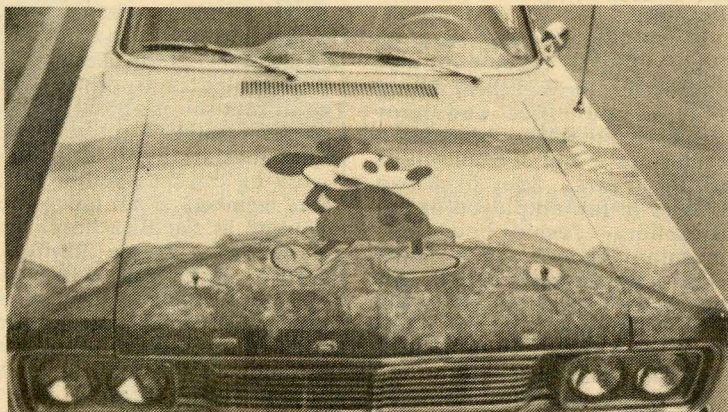
But the interior of the car had to be worthy of its exterior, so Puckett upholstered it in velvet, throughout, including the dash, and laid in shag carpeting to set off the already installed bucket seats.

He and a commercial painter friend, W. C. Erwin in Union painted the car by first drawing stencils, then embossing, then they painted. It was all Puckett's idea, but he admits that Erwin did most of the detailed art work and he contributed by filling in some of the figures and did some of the touch-up. Subject matter was gleaned from comic books, comic strips and magazine reproduction of the characters.

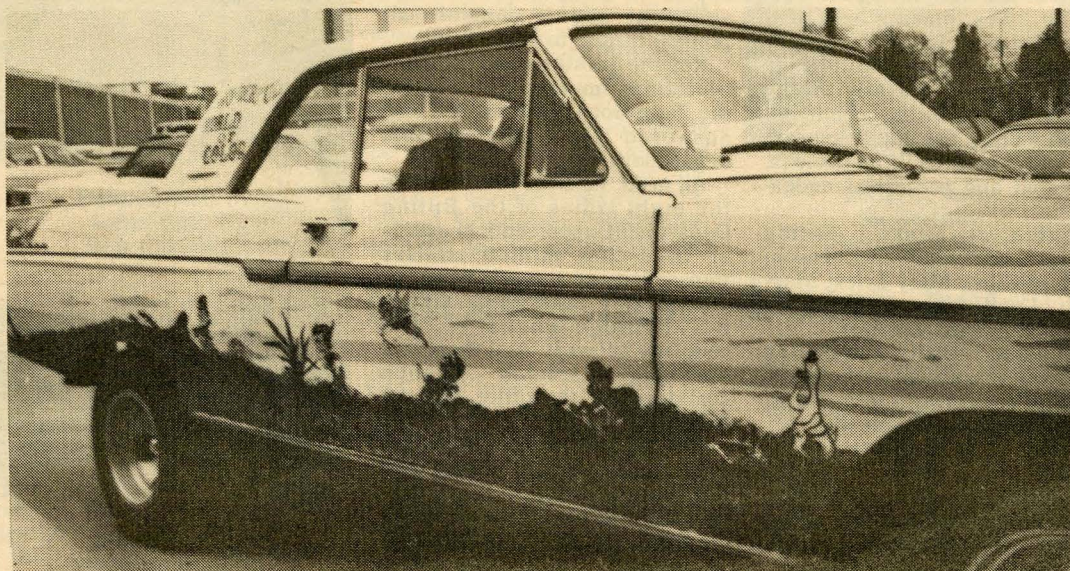
Tha... Tha... Tha... Tha... Tha... Tha... That's All Folks!

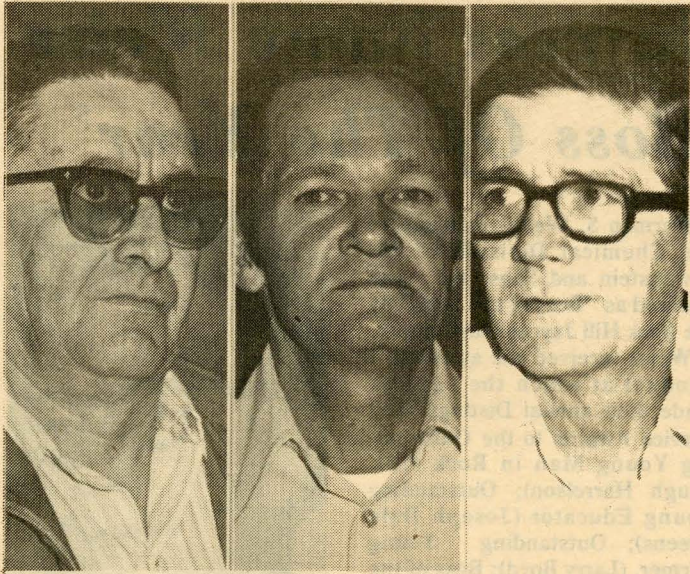


WORLD OF COLOR-Clarence Puckett, Finishing Department, poses with his unique and colorful decorated auto. He never rides alone. All his favorite cartoon characters ride along with him as he commutes daily from Union, S. C.



... Mickey rides out front.





Crosby

Roach

Gordon

In March

Fifteen Employees Join Service Clubs

Fifteen employees from eight departments qualified for service club awards in March. Four are employed in Print Department; three in Packing; two each in Napping and Open Stock; and one each in Industrial Engineering, Screen Print, Grey and White.

Three of the employees were employed in March 1941 and qualified for membership in the 35-year club. They are: Rufus Crosby, supervisor in the White Department; Eugene B. Roach, Print; and Ernest L. Gordon, Print Swings.

Employees of 10 years later in March 1956, five qualified for the 25-year club. There were also five who were employed in March 1966 who joined the 10-year club. Two joined the 15-year club.

Names, departments, and dates of all those completing Service requirements during March 1976 are listed below.

10 Year Club	Department	Anniversary Date
D. W. Mahaffey, Sr.	Industrial Eng.	3/21/66
Roger J. Brooks	Screen Print	3/14/66
John R. Hines	Nappers	3/14/66
Charleszo Thurman	Nappers	3/14/66
Everett Ervin	Packing	3/21/66
15 Year Club		
Walter W. Covington	Packing	3/01/61
Nolan C. Walters	Print	3/22/61
20 Year Club		
None		
25 Year Club		
Donald J. Workman	Print	3/01/51
Constance G. Comer	Open Stock	3/05/51
Edwin L. Williamson	Open Stock	3/05/51
Lewis P. Barrett	Packing	3/16/51
James R. Gamble, Jr.	Grey	3/81/51
35 Year Club		
Rufus H. Crosby	White	3/81/41
Eugene B. Roach	Print	3/21/41
Ernest L. Gordon	Print Swings	3/24/41

Safety Checks Slated For Boats On Lake Wylie

Boat safety check stations will be manned on nine of South Carolina's major reservoirs each Saturday morning throughout the boating season by South Carolina wildlife conservation officers.

Each station will be in operation between 10 a.m. and Noon on each lake and the boating public is invited to have officers check equipment for safety and compliance with the law.

Boat safety checks for boaters on Lake Wylie, will be performed at a station set up at the Rock Hill Boat Landing.

There is no charge for the service but it could save a boat operator a fine for operating with faulty, unsafe and illegal gear.

Boaters throughout the state also can expect increased patrolling by wildlife officers in an attempt to cut down on boating accidents and fatalities.

\$\$\$

Two Dollar Bill Returns

On April 13, 1976, Thomas Jefferson's birthday, a new two-dollar Federal Reserve Note issue, features an engraving of Thomas Jefferson from a portrait painted in the early 1800's by Gilbert Stuart.

The back of the note will incorporate a rendition of the John Trumball painting, "The Signing of the Delcaration of Independence."

While the design of the new note is consistent with the nation's bicentennial, it is not solely a bicentennial commemorative, according to Treasury officials. Rather, the two-dollar bill fulfills a permanent and practical role in the use of American currency. As \$2 bills gradually come to be substituted for \$1 bills, fewer pieces of currency will need to be carried by individuals and small cash transactions will be greatly facilitated.



Federal laws permits illustrations of paper money in black and white of a size less than 3/4 or more than 1% times the size of the genuine obligation for newsworthy purposes in books, journals, newspapers or albums. Other reproductions are strictly prohibited.

The two-dollar bill, which has been associated with colorful superstitions of folklore, was first issued as U.S. Currency in 1862. However, the history of two-dollar denomination dates back to 1776. It has been issued in various forms as Treasury notes, Silver Certificates, National Bank currency and U.S. Notes.

The most recent issue of the \$2 bill was the 1963A series U. S. Note featuring Thomas Jefferson on the face and Monticello on the back. The last printing of this bill was in May, 1965, and it was officially discontinued in August, 1966, due to lack of public demand.

(Continued From Page 1)

Joslin Park Will Feature New Nine-Hole Putt-Putt Course

ready for play when the park opens in May."

The miniature course is designed, with plans and specifications being a composite of ideas and designs adopted for existing, similar courses, located in other industrial and public recreation areas. Construction will be by the Mechanical Department.

Concerning the inspection, Vaughan said, "We have given the park a fine tooth going over and find it to be in excellent condition. The condition of the entire area, facilities and equip-

ment are testimony that users of the park help to preserve the park and undoubtedly respect rights of others to enjoy the park and what it has to offer."

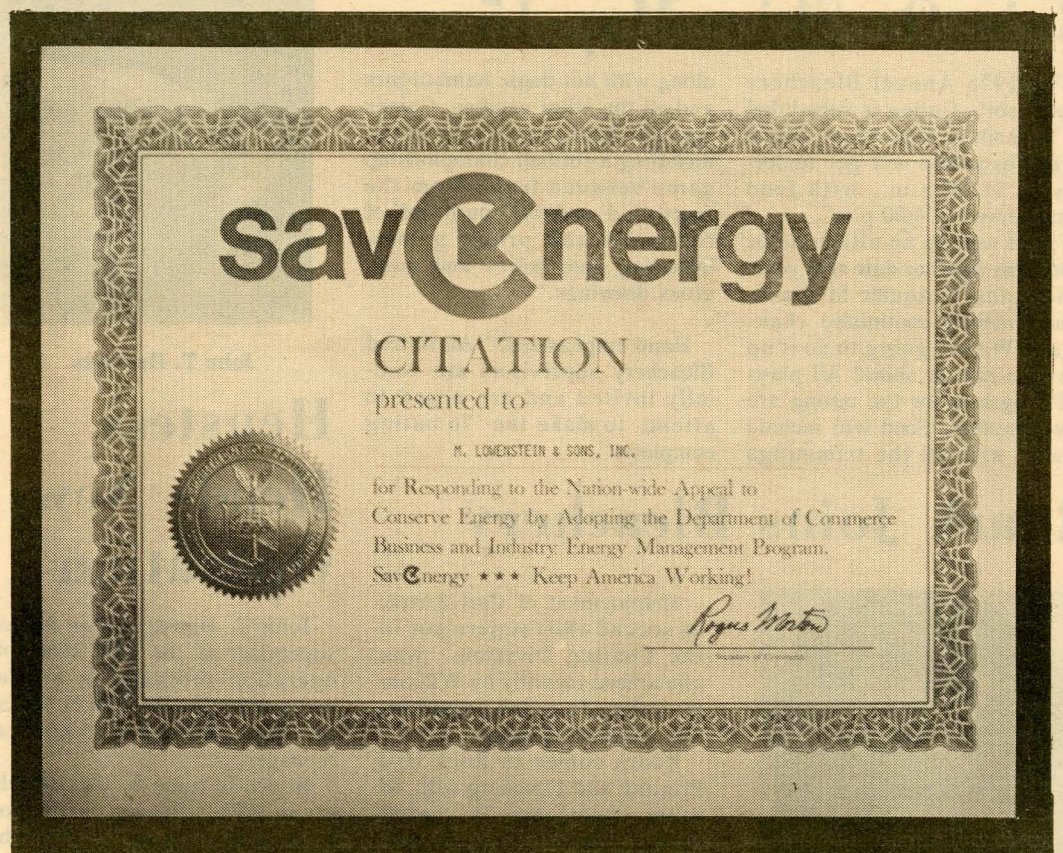
The park will be closed on Mondays for the purpose of cleanup. It will be open on Tuesdays through Saturdays each week, from 11:00 a.m. to 9:00 p.m. On Sundays, the park will be open from 1:00 p.m. to 9:00 p.m.

Use of the park on Saturdays, Sundays and holidays will be limited to employees, their families, and special guests. Any

guests on these days must be accompanied by an employee who will be responsible for their identification and behavior.

A group using the park on Saturdays, Sundays or holidays for picnics, family reunions, cookouts or swimming parties, must include one employee who will be required to make reservations for facilities.

The employee will also be responsible for identifying members of the group when they enter the park and for policing the area after use.



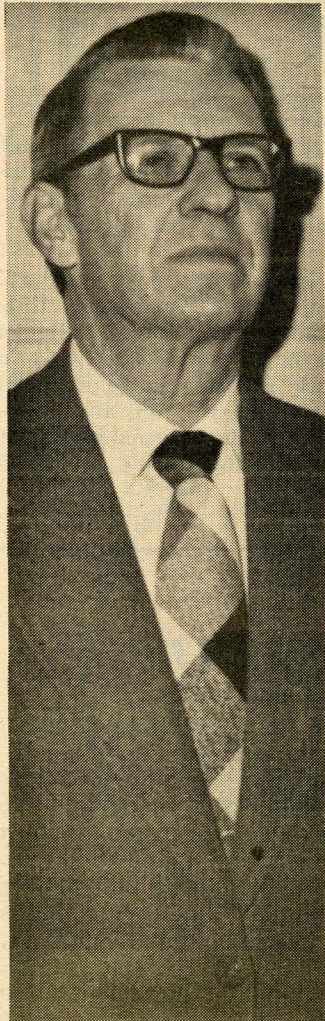
ENERGY PROGRAM CITED-Rock Hill Printing and Finishing, as a division of M. Lowenstein and Sons, Inc., received recognition during March from the Department of Commerce for it's efforts in the field of energy conservation.

The Citation, signed by Rogers Morton, Secretary of Commerce, and forwarded to William H. Grier, Jr., vice president and general manager, cited the Bleachery, "for responding to the nation-wide appeal to conserve energy by adopting the Department of Commerce Business and Industry Energy Management Program."

Forty Years

Smith: Came, Stayed, Excelled And Retired

Forty years ago, Charlie Smith came to the Bleachery seeking the opportunity to build a career in



Charlie Smith

roller printing. Early this month he retired.

Did he regret the move from Ware Shoals to Rock Hill?

"Not one bit. I am happy with my career and I can say that everything I have, I owe to the Bleachery. They gave me the opportunities to advance and I have tried to make the most of them. I have enjoyed my work and the people," Smith said. "I have worked for all six of the Bleachery's general managers from Mr. Joslin to the second generation of the Griers."

In 1955, when the Grier Division was opened, he was transferred and placed in charge of printing in the Grier Division and was later promoted to superintendent of printing in that Division. He also served as divisional superintendent for two years.

During his 40 years, Charlie was known throughout the company for his devotion and dedication to his work and his company. He was a workhorse in every sense and his enthusiasm and sincerity were contagious.

Smith is married to the former Lizzie Lattimer of Ware Shoals who was employed by Rock Hill Printing and Finishing for 36 years and worked in Mr. Easley's office for many years. She retired in 1974.

They live at 739 Eden Terrace and plan to travel and stay active in their yard and garden. They are members of the Oakland Baptist Church.

Supervisor's Outing

Rain Or Shine-May 15

The 1976 Annual Bleachery Supervisor's Outing is scheduled for Saturday, May 15 at Joslin Park. Festivities will get underway at 11:00 a.m., with food being served at 4:00 p.m.

There will be no alternate or inclement weather date this year.

According to Aquille M. Hand, arrangement's committee chairman, "We are going to do it up this year-rain or shine! All plans and programs for the outing are now complete. Food will include steaks, with all the trimmings

along with hot dogs, hamburgers and all the other goodies. Games for all have been arranged, including a softball championship game between teams from the 'north end' and the 'south end' of the plant and prizes galore, including gate prizes and numerous drawings."

Hand emphasized, "All retired Bleachery supervisors are cordially invited and are urged to attend, to make the '76 outing complete."

Roark Joins Bleachery



Carl Roark

Employment of Carl Roark, as second shift supervisor in the Coating Division, was announced recently by William H. Grier, Jr., vice president and general manager.

Roark comes to Rock Hill Printing and Finishing with 18 years experience in coated fabric printing, vinyl and urethane printing and color matching.

A native of Virginia, Roark comes to Rock Hill from Winchester, Va. He and his wife Sally and two children, will be moving to Rock Hill in the near future.



E. Ross Blew

E. R. Blew Selected By Winthrop

E. Ross Blew, vice president for Public and Industrial Relations, has been appointed Adjunct Professor of Business Administration at Winthrop College for the 1976-77 academic year.

In a letter to Blew, Jerry H. Padgett, Dean, School of Business Administration wrote: "It is a pleasure to inform you that President Charles B. Vail has approved your appointment."

The adjunct faculty serve without remuneration and do not accrue time toward tenure. However, they are eligible to use College facilities and participate in the college recreational and entertainment programs.

"We hope you will find your relationship with our programs and our students rewarding. We believe that you can make a distinct contribution to the School of Business Administration," Padgett wrote.



John T. Heustess

Heustess Heads New Operation

John T. Heustess was named supervisor of the new strike-off operation recently, in an announcement by William H. Grier, Jr., vice president and general manager.

Heustess came to the Bleachery in 1972, following graduation from Furman University, where he majored in economics and business administration. After completing a six months management course, he was assigned to the Color Department, where he worked for three years.

He is a native of Hartsville, S.C.

Jaycees Name Weisz 'Boss Of The Year'

Herman S. Weisz, manager of the Chemical Division of M. Lowenstein and Sons, Inc., was honored as "Boss of the Year" by the Rock Hill Jaycees last month.

Weisz received the award at a banquet at which the Jaycees made their annual Distinguished Service Awards to the Outstanding Young Man in Rock Hill, (Hugh Harrelson); Outstanding Young Educator (Joseph Dale Greens); Outstanding Young Farmer, (Larry Boyd); Boss of the Year (Herman Weisz) and Outstanding National Guardsman (Robert Patton).

The award was made by Jaycee President Jerry Gunderson.

Weisz is Manager of Lowenstein's Chemical Division with office in Rock Hill and plants in New Jersey and South Carolina. He was formerly Manager of the Research Lab at Rock Hill Printing and Finishing.

He is a native of New York and a graduate of Auburn University, with a degree in Textile Chemistry. Weisz is a member of the



Herman S. Weisz
Boss of The Year

American Association of Textile Chemists and Colorists; a member of the Elk's Club and on the Board of the Catawba Regional Planning Council.

Guardsman Of The Year Title Goes To Patton

Robert L. "Robby" Patton, Bleachery Screen Print Operator, was chosen "National Guardsman of the Year" at the annual "Jaycee" Awards Banquet of the Rock Hill Junior Chamber of Commerce.

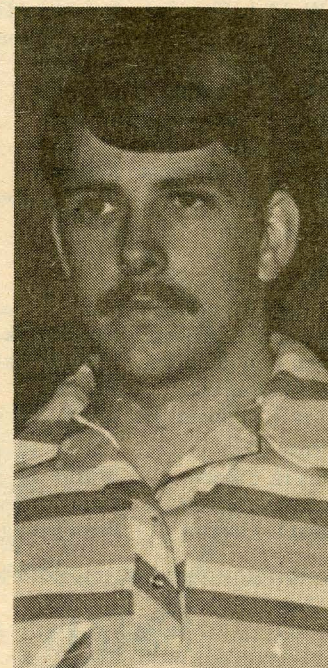
The 23 year old Patton, for the past five years has been a member of the S. C. National Guard, 2nd Battalion, 263rd Armored Division, based in Rock Hill. He holds the rank of Specialist 4 in Division Finance.

Guard Commander, Robert R. Williams, in presenting the "Jaycee" award, said of Patton, "This is a young man who was chosen for his attitude and on whom we can depend for any task we assign to him."

Patton, a Rock Hill High School graduate, came to work at the Bleachery in 1971 as a helper, in Screen Print. After advancing and serving a short time as Assistant Operator during 1972, he earned promotion to Screen Print Operator in 1973.

Robby is married to the former Phyllis Wilson of Rock Hill and

they reside with their four year old son in Rock Hill.



Robert Patton,
Outstanding Guardsman

L. E. Hawkins Promoted

The promotion of Lawrence E. Hawkins to print supervisor was announced recently by William H. Grier, Jr., vice president and general manager.

Hawkins, a roller printer since 1959, has been in training for the past month as the replacement for Charlie Smith, who is retiring this month. He has lived in the Rock Hill area for 21 years and has been active at both Roddey Baptist Church and Rawlinson Road Baptist Church.

A native of Greenville, S. C., Hawkins worked seven years at Southern Bleachery before coming to Rock Hill in March, 1955.



Lawrence E. Hawkins