



Bleachery Beacon

4-1975

Bleachery Beacon - April 1975

Rock Hill Printing and Finishing Company



JOSEPH ANDERER - President, M. Lowenstein and Sons, Inc., during recent inspection visit to Rock Hill Printing and Finishing Company in February.

Joseph Anderer

President of MLS Praises RHP&F And Employees

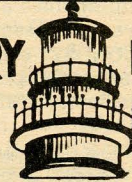
Joseph Anderer, President, M. Lowenstein and Sons, Inc., last week singled out Rock Hill Printing and Finishing Company and its employees as "the plant that over the past 45 years has been a foundation of the company."

Referring to the competitive pressures in the Textile Industry in today's economic atmosphere, Anderer said of the Bleachery employee's attitude, "Their response has been something new, something better, and with that spirit they and our great company will continue to grow in the years ahead."

Anderer's comments and first-hand observations of Bleachery operations appeared in the current issue of the newspaper 'PATTERNS AND PEOPLE' and are reprinted for Beacon readers on pages 6 and 7

BLEACHERY BEACON

Published By Rock Hill
P.O. Box 10272



Printing & Finishing Co.
Rock Hill, S.C. 29730

VOLUME 6, ISSUE 3

APRIL 1975

ROCK HILL, S.C.

Summertime Shutdown

Week June 28-July 7

William H. Grier, Jr., Vice-President and General Manager, announced this week that the Bleachery will close for shutdown week from 7:00 A.M. on Saturday June 28 until 7:00 A.M. Monday, July 7, when normal working hours will resume.

During the shutdown period, skeleton crews of personnel will be requested to work in order to maintain customer services and necessary allied activities. Maintenance personnel will be scheduled to work on major overhauls normally performed during this period.

Vacation paychecks, totaling more than three quarters of a million dollars, will be distributed to employees on the job, in each respective department, on Friday, June 27.

At Grier Division

Second Coating Range Arrives, Installation Already Underway



CHECKING RANGE BLUE PRINT - Tony Vaughan, second from left, Assistant Plant Engineer checks over new Polyurethane Range blueprint with engineering crew at installation site on the first floor of the Grier Division. Final increments of the Range, longer than a football field when finally erected, arrived at the Grier Division in late March. In photo above, left to right: Rovetti Arcangelo of Vicenza, Italy; Tony Vaughan; Jim Funderburk, RHP & F Draftsman and Bill Smith, Bleachery Mechanical Department.

Diversification, in both products and operations at RHP & F surged forward, taking another long stride during March, when the last elements of a new Coating Range were delivered to the Grier Division. Engineers, technicians and erection crews were on hand to receive the shipment and inventory the tons of metal parts resembling a giant "Erector Set."

Installation of the new range began almost immediately on the first floor of the building in an area designed and already prepared to receive the Coating Range. The mammoth range will occupy space comparable to a football field, when completely installed.

The Grier Division presently houses a similar Coating Range that has been in operation for approximately three years.

B. A. "Tony" Vaughan, Assistant Plant Engineer, is directing in close concert with B. H. Pinner, Manager, Coating Division. Assisting Vaughan is RHP & F Draftsman, J. L. "Jim" Funderburk and Rovetti Arcangelo of Vicenza, Italy, manufacturing representative.

(Continued On Page 9)

4-Day Employee Sale April 19, 21, 22, 23

One of the largest Employee Sales ever to be held at the Bleachery has been scheduled to begin on Saturday, April 19 and will be continued the following week on Monday, Tuesday and Wednesday. The sale is part of the Employee Purchase Program and will be held at the Bleachery in the Tin Warehouse located at the corner of Stewart and White Streets.

Jack Bolin, director of the four-day sale, stated that merchandise placed on sale will be of a wide variety and include: assortments of colorful Poly-

ester double knit fabrics in 1 1/2, 2 and 3 yard lengths; matching Sheets and Pillow Cases in solid colors and prints in all popular sizes such as Twin, Full, Queen and King sizes; Comforters and Bed Spreads, some in same matching patterns as sheets and pillow cases; Children's "Slumber Bags;" Laundry utility bags and Towels, both embroidered and in prints - all in popular sizes such as Wash Cloths, Finger Tip Towels, Hand Towels and Bath Towels.

In order that all employees

(Continued On Page 8)

Joslin Park Opening For Employees May 11

Sunday, May 11, marks the opening date for Joslin Park. In the event of inclement weather, the opening date will be postponed one week, to Sunday, May 18. The 17 acre recreational facility on the shores of Lake Wylie, is maintained and operated by RHP & F for its employees and their families and friends. The opening date was set following inspection by a team from the Bleachery composed of Buddy Jenkins,

Manager, Mechanical Department; Bill Love, General Supervisor, Carpenters and Yard; Harold Kennington, Employment Manager and Sam Hudson, Park Custodian.

Final touches are being completed at this time, readying the park for the '75 season. Lawns have been reseeded, additional shrubbery planted in general park beautification for

(Continued On Page 3)

Scholarship Deadline April 15

Winners To Be Named In June

Tuesday, April 15, marks the deadline for submission of applications by qualified 1975 high school graduates, who are children of Lowenstein employees, for the two, 4 year scholarships are awarded each year and amount to \$1,000 per year or a total of \$4,000 to each recipient who maintains passing grades for the 4 year period.

Amount of the scholarship will be paid by the company directly to the college in annual, semi-annual or other periodic payments. The difference between the scholarship payment

and the total charges by the college will be paid currently by the student.

Although application forms were distributed to all area high schools, full details and application forms may be obtained from the Industrial Relations staff at Rock Hill Printing and Finishing Company.

Eligible students must file applications and related data no later than the April 15 deadline to be considered for this year's awards.

In applying for one of the scholarships, it is mandatory

that the applicant be a son or daughter of a parent who is employed by M. Lowenstein and Sons Inc. or any subsidiary company. Applicants are encouraged to complete forms without regard to race, creed, color, sex, age or national origin.

M. Lowenstein and Sons Inc. will have exclusive jurisdiction in determining all questions regarding eligibility basis for awards and other requirements.

(Continued On Page 8)

"5% SECONDS" Top Topic

Management & Supervisors Meet On 'Seconds' Program



'OFF-GOODS' WILL NOT SELL! - William J. Batura, President of MLS Eddington Decorative Fabrics Division in New York, points up the need for holding to the minimum "5% SECONDS" tolerance level at RHP & F. Batura, representing top echelon management, met with the "5% SECONDS" committee members and nearly 300 supervisory and managerial personnel at RHP & F in March. Batura's summary in short: "Off-Goods will not sell!"



CHAIRMAN "5%" SECONDS COMMITTEE-Aquilla M. Hand, Manager, Plant #1 and Chairman of the "5% SECONDS" committee, officiated at the recent meeting of supervisors and managers with William H. Grier, Jr., RHP & F Vice-President and General Manager and William J. Batura, Eddington Division President, M. Lowenstein and Sons, Inc. Hand gave a brief summary of the committee action plan. He cited committee accomplishments to date and extended the appreciation of committee members and management for the rapid response of cooperation given the program. Hand introduced members of the "5% SECONDS" Committee and Mr. Batura.

The Bleachery's "5% Seconds" program gained momentum and was sparked with new emphasis during March when the ten-man "5% Seconds" Committee, along with nearly 300 RHP&F Management and Supervisory personnel met with William J. Batura, President of the MLS Eddington Decorative Fabrics Division.

Top echelon personnel representing each department and all three shifts at the Bleachery convened for the fast-moving, two-hour session in Johnson Hall Auditorium at Winthrop College.

Eddington Fabrics, historically one of the Bleachery's largest accounts, is famous for its high quality standards required in the highly competitive home furnishing trade.

William H. Grier, Jr., RHP & F Vice-President and General Manager opened the meeting and greeted all those present, stressing in his opening remarks that, "quality is everybody's business. What is done at one end of the business permeates throughout the production process, and the good, bad or indifferent reaches the customer."

Referring to the plant-wide effort Grier said, "I remind you that all of us - every Bleachery employee - is charged with the task of contributing to the success in reaching our goal - a mini-

mum "5% Seconds" tolerance level. Although the "5% Seconds" Committee here at RHP & F was born in New York, the Bleachery is the battleground of production where our objective is to maintain this minimum of "5% Seconds" as an actual, routine, operating fact."

Aquilla Hand, Chairman of the "5% Seconds" Committee, committee members, presented Mr. Batura to the assembly.

Batura, with over 25 years experience in home furnishing textiles, stressed that the "5% Seconds" program is not only a goal that must be maintained in production at RHP&F, but is also an assurance that mistakes will not occur in production that could affect old and established customer relationships."

Batura compared sales of home furnishing textiles that fall into the "Seconds" category to the supermarket manager who must tell the young, shopping housewife that she may expect, two bad eggs in every dozen she might purchase."

Batura pointed out, "Home furnishings in 1985 will be more than three times the yardage we are now printing. We must make our "5% Seconds" tolerance level work for us now, and be ready for this increase."

"Times are changing," he continued, "Seconds and off-goods production will not be ignored by big business. These products will not sell. Each large company now has its own Quality Controls and off-goods will be returned without hesitation. Final sale depends upon perfectly matching colors, design, shading, etc."

"RHP&F is in the high quality color business," Batura said, "Everything today is in color and it is most important that it be exacting."

"During 1975, with our program of "5% Seconds" working," Batura stated, "one yard out of every twenty yards produced could fall into an "off-goods category and I remind you that a minimum of "5% Seconds" represents 5¢ out of every \$1.00 worth of production."

"Rationalizing the problem of "Seconds" and off-goods, i. e. bad grey goods, narrow goods, grease spots, etc. has no place in this program. We must face our problems and solve them," Batura said.

Five salient points for all to consider, in working under the "5% Seconds" umbrella, were given to Bleachery representatives.

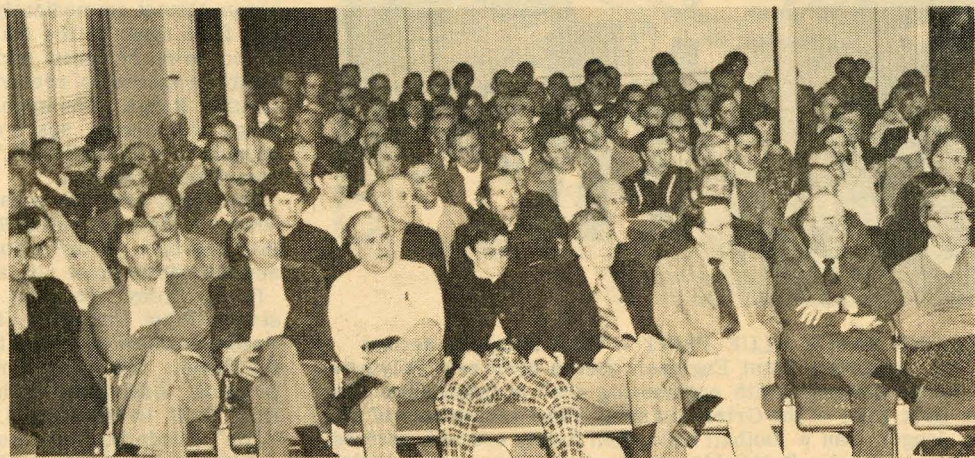
1. Machinery. "Question the machine. Machinery plays a big part in what we do. Some piece of machinery massages the goods we process. So keep a sharp, keen eye on the machine and the person on the machine must be alert."

2. Working relationship. "Have a better give and take relationship. Share your problems, when and if you have any and work closely together in our common effort."

3. Waste. "Take the time to ask yourself, 'How much can a customer take before he stops buying?'"

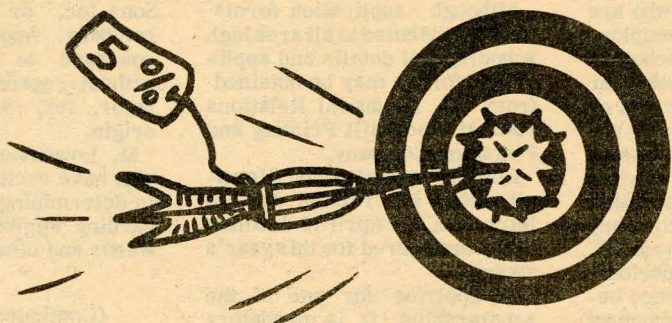
4. Frame of Mind. "Continue to instill in yourselves, and in your people, pride in doing a good, professional job."

5. The Salesman. Batura pointed to, "The Eddington representative. The guy you actually equip with the merchandise to sell. Help him. Give him top quality goods to sell and don't place him in a weak position where he must 'band aid' an account."



"5% SECONDS" COMMITTEE MEMBERS - joined other Bleachery supervisory and managerial personnel at Winthrop's Johnson Hall auditorium at the March meeting with William H. Grier, Jr., RHP & F Vice-President and General Manager and William J. Batura, President of the MLS Eddington Division.

Seated on the front row, left to right, committee members are: Dick Shores, Bob Brozina, Jack Addison, John Hancock, Bernd Kral, Roger Smith, Bill Hart, Bill Christian and Charlie Reese. Committee member Tom Latham was spokesman for the committee and is pictured between Shores and Brozina on the second row.



SIGNS OF THE TIMES AT RHP & F - Jack Bolin puts the finishing touches on one of the "5% Seconds" target boards designed to keep employees abreast of the Bleachery-wide, running fight against "seconds" on Eddington Fabrics. The "bull's eye" five reflects the maximum 5% tolerance level in processing the high quality home furnishing fabrics at RHP & F.



RECOGNIZED BY LEGION - William H. Grier, Sr. (left), former Manager and Executive Vice-President of RHP & F receives the American Legion Public Service Award from the Frank Roach Post 34 in Rock Hill. Making the presentation is Connie R. Morton, Master of Ceremonies and former Commander of Post 34. The awards ceremony was the highlight of the 56th Anniversary Banquet of Post 34 held on March 21, with approximately 400 Legionaires and distinguished guests in attendance.

Public Service Award Legion Honor Bestowed Upon W. H. Grier, Sr.

William H. Grier, Sr., former General Manager and Executive Vice-President of Rock Hill Printing and Finishing Company and President of the Finishing Division of M. Lowenstein and Sons, Inc., was presented the American Legion Public Service Award by Frank Roach Post 34 in Rock Hill, on March 21.

The award was tendered Grier, recognizing him as "a widely known Rock Hill industrial, educational and civic leader for outstanding contributions to the service of community, state and nation." The plaque and accompanying scroll were presented by the post, one of the largest in the two Carolinas, at a presentation ceremony highlighting the 56th Anniversary Banquet of Frank Roach Post 34. Approximately 400 Legion members and guests were in attendance at the banquet prepared and served by the Women's Auxilliary of Post 34.

Guests of Honor included Senators and Representatives of the South Carolina State Legislature; representatives of Rock Hill City and York County government; Gold Starr Mothers; Members of the famous "Forty and Eight;" American Legion Veterans of World War I and other distinguished civic leaders.

Norman Moon, Commander of Post 34, presided over the program with Aubrey Wilson, Corporate Traffic Manager of MLS Trucking Division and past Post 34 Commander, presented the Credentials for the award.

Connie R. Morton, Senior Vice-President of Citizens and Southern National Bank and a former Commander of Post 34, was Master of Ceremonies, introducing Mr. Grier and making the awards presentation. As part of the ceremony, Morton read a congratulatory letter from Senator Strom Thurmond, R-S.C., to Post 34, intended for Grier.

John L. Ferguson, Supervisor of the Bleachery Stock Room and past State Commander of the American Legion and past Commander of Post 34, assisted in the presentation.

Prior to his retirement in 1971, after 39 years at RHP & F, Grier for many years headed the giant Rock Hill and Lyman Printing and Finishing plants and other MLS operations from his office at the Bleachery, serving as President of the Finishing Division of M. Lowenstein and Sons, Inc., and as Consultant.

A native of Fort Mill, Grier is a graduate of Clemson University and received an honorary doctorate from Clemson in 1963. He has also served as a member of the Clemson Foundation, President of the Alumni Association, and received the Distinguished Alumni Award.

As vice-chairman of the Winthrop College Board of Trustees, Grier was a leader in the movement to obtain coeducation for Winthrop. He has also served on the State Commission for Higher Education, as a trustee of Queens College and on the Board of Visitors at Clemson, Presbyterian College and the Medical College of South Carolina.

An elder in the Oakland Avenue Presbyterian Church, Grier also is a former vice-president of the Palmetto Council of Boy Scouts of America and hold the coveted Silver Beaver Award.

A former Chairman of the Charlotte Branch of the Federal Reserve Bank, Grier also served as deputy board chairman of the Federal Reserve Bank of Richmond, and as a member of the board of the Piedmont and Northern Railroad.

A former president of the Rock Hill YMCA, Grier has also served on the boards of Carolinas Community Services, Rock Hill Chamber of Commerce, Red Cross and Country Club and on the advisory councils of the State Ports Authority and the Presbyterian Home.

Grier is married to the former Lila Atkinson of Spartanburg and they have two sons, William H., Jr. and Buford, and seven grandchildren.

Joslin Park Open May 11

(Continued From Page 1)

employees. The recent ice storm caused severe damage to a number of trees which have been pruned and doctored. Additional sand has been added to the beach areas, following refurbishing of the sea wall. General beautification will be completed well before the opening date.

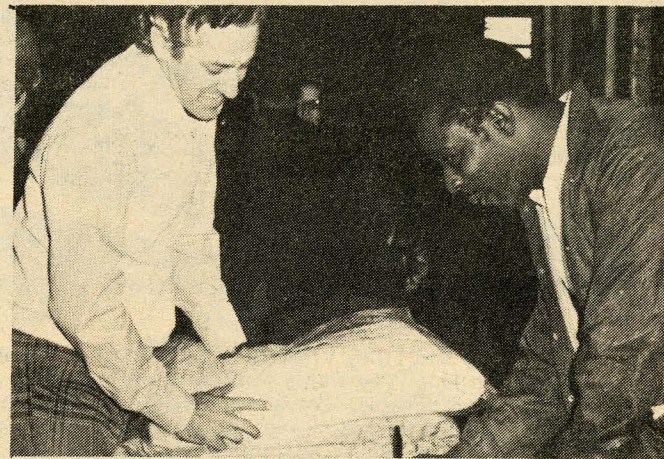
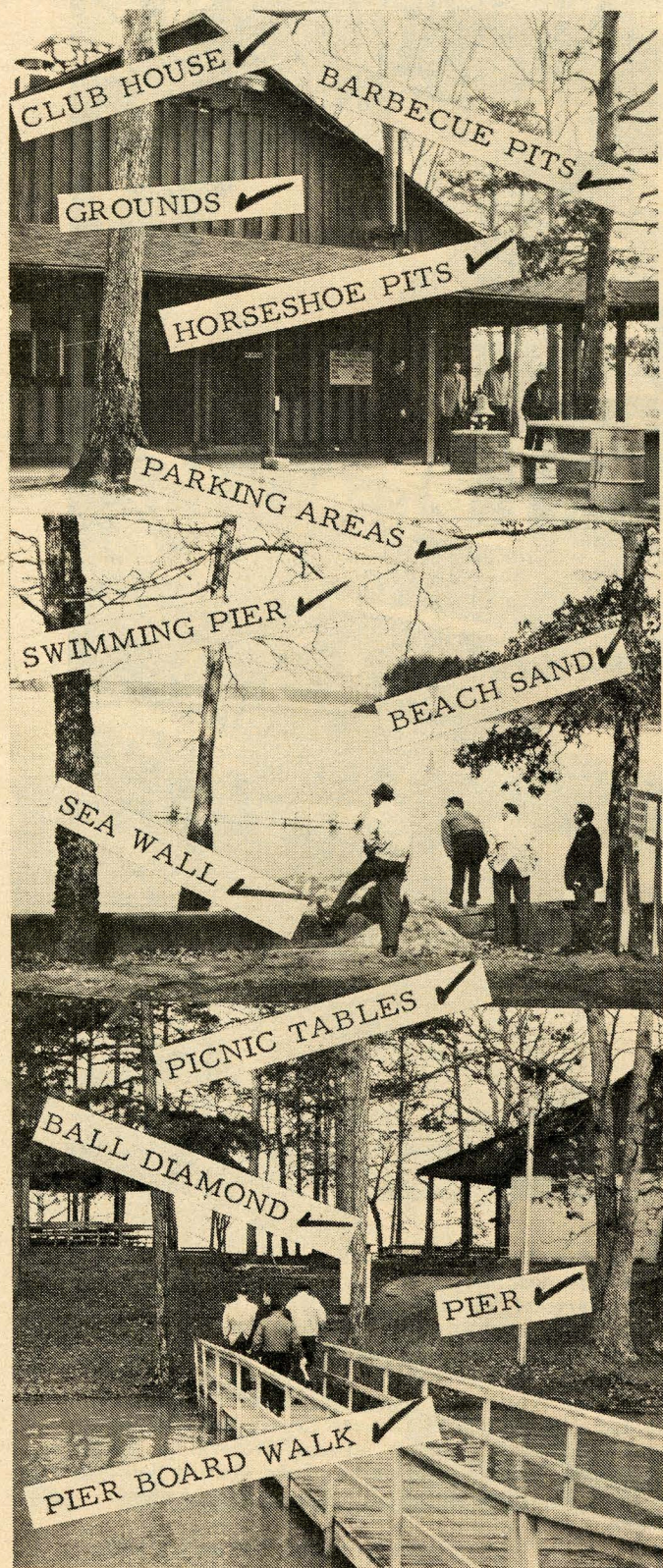
According to the inspection team, the park appears to be in excellent condition at this time of the season, "which testifies to the consideration given to it during summer use last year." Kennington, in speaking for the group stated, "This is the kind of cooperation we appreciate. Litter in the park, abuse of equipment, etc. only saps park funds that could be applied to overall long range improvement."

The park will be closed on Mondays for the purpose of cleanup. It will be open on Tuesdays through Fridays each week from 1:00 P.M. to 8:00 P.M. and on Sundays the park will be open from Noon to 8:00 P.M.

Use of the park on Saturdays, Sundays and holidays will be limited to employees, their families, and special guests. Any guests on these days must be accompanied by an employee who will be responsible for their identification and behavior.

A group using the park on Saturdays, Sundays or holidays for picnics, family reunions, cook-outs or swimming parties, must include one employee who will be required to make reservations for facilities.

The employee will also be responsible for identifying members of the group when they enter the park and for policing the area after use and for leaving it in acceptable condition.



EMPLOYEE SALE - Jack Bolin (left), Director of Employee Sales, closes a sale with David Long, Trucking Division during a previous Employee Sale held last November. Bolin said, "The up-coming sale beginning on April 19 will carry a wide variety of merchandise for the employee, such as sheets, pillow cases, towels, comforters, children's slumber bags, laundry bags, Polyester double knit yard goods, etc. We expect to be pretty busy during the four-day sale."

RHP&F Hosts

Chinese Textile Trade Delegation

Rock Hill Printing and Finishing Company was host during March to five members of the China National Textile Import and Export Corporation, Peking, China, visiting the United States at the invitation of the National Council for U. S. - China Trade. Mr. Philip Feibusch, Executive Vice-President, M. Lowenstein and Sons, Inc. was instrumental in arranging for the visit. Feibusch recently visited China on Textile matters.

Mr. Walter Sharoff, Vice-President, Export Division at MLS in New York, accompanied by the visiting Chinese textile group at the Bleachery.

William H. Grier, Jr., RHP & F Vice-President and General Manager, presented a detailed briefing on Bleachery operations and products prior to conducting a tour of plant facilities. A question and answer period followed the tour.

The China National Textile Import and Export Corporation, known as "Chinatex," is one of China's eight corporations responsible for carrying out China's foreign trade. Of China's total foreign trade in 1973 of about \$10 billion, the Textile Corporation was responsible for an estimated \$1.83 billion. The United States is China's second largest trading partner.

Madame Han Fan-yu, the Deputy Director General of Textile

Corporation, headed the delegation on their visit to the Bleachery.

The four delegates accompanying Madame Han were:

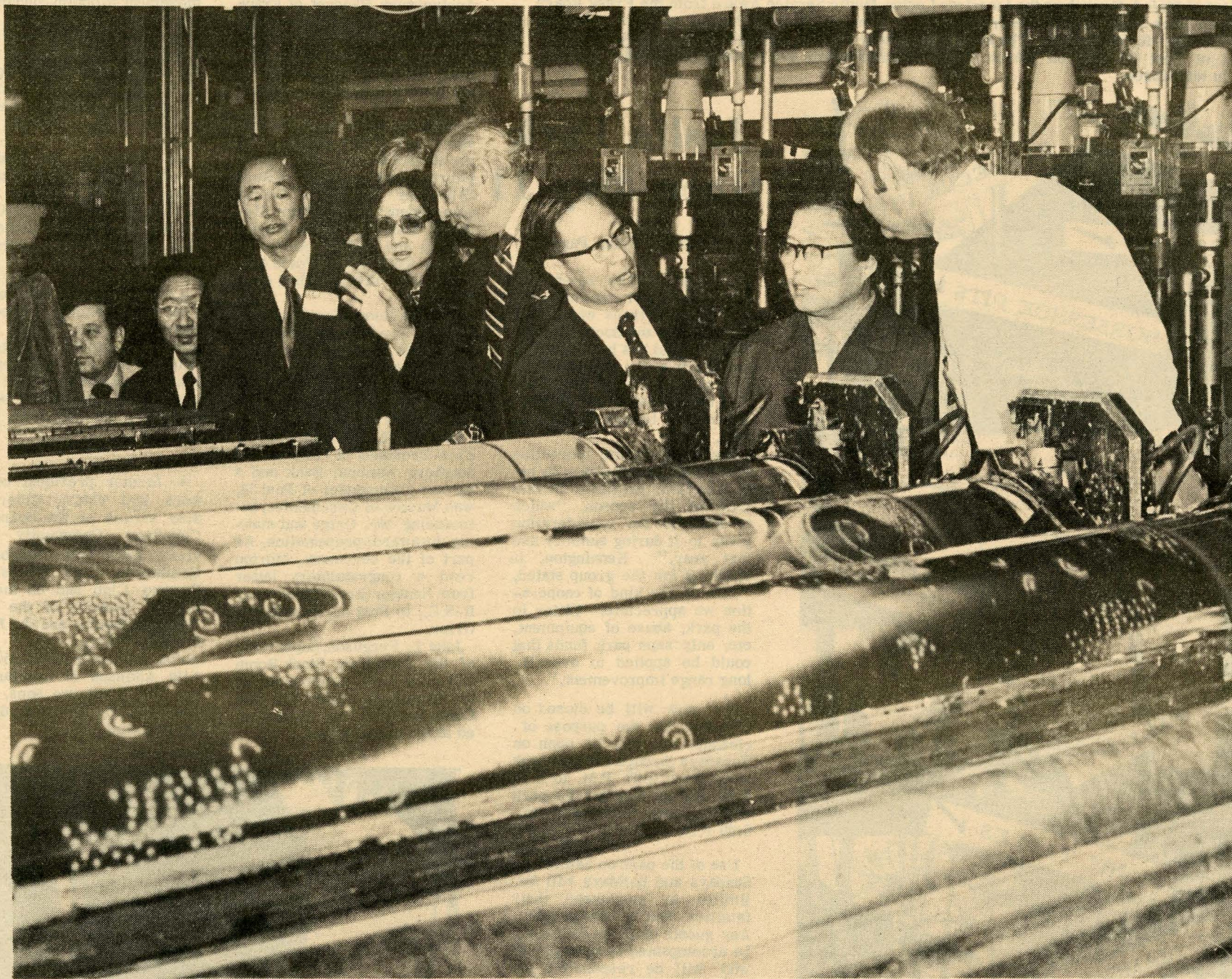
Mr. Tsung Wen-tse, Co-Manager of the Garment Section of the Textiles Corporation, with primary responsibilities for grey goods.

Mr. Ma Hung-sheng, specializing in silk, and a member of the Garment Section of the Textiles Corporation Delegation at the Chinese Export Commodities Fair.

Mr. Huang Tsien-mo, acted as interpreter for the group. He is also a member of the Textiles Delegation of the Chinese Export Commodities Fair.

Miss Veronica Yhap also accompanied the visitors along with Miss Suzanne R. Reynolds of the National Council for United States - China Trade, in Washington, D. C.

Thomas J. Latham, RHP & F Vice-President and Assistant General Manager; E. R. Blew, Vice-President, Public and Industrial Relations; Aquille M. Hand, Manager, Plant I; Charles A. Reese, Manager, Plant II and Ben A. Cromer, Executive Assistant, took part in the briefing sessions and assisted in the plant tour.



CHINESE VISITORS VIEW SCREEN PRINT - Members of the delegation from The China National Textile Import and Export Corporation, Peking, China who visited the Bleachery during March, are pictured above receiving a briefing on RHP & F Rotary Screen Print operations at machine-side from Mr. Walter Sharoff, Vice-President, Export Division of M. Lowenstein and Sons, Inc. and William H. Grier, Jr., RHP & F Vice-President and General Manager.

The Chinese delegation came to the United States to visit portions of the Textile Industry at the invitation of the National Council for United States - China Trade, Washington, D. C.

Pictured from Left to Right are: Ben A. Cromer, Executive Assistant, RHP & F; Mr. Ma Hung-sheng, member of the Gar-

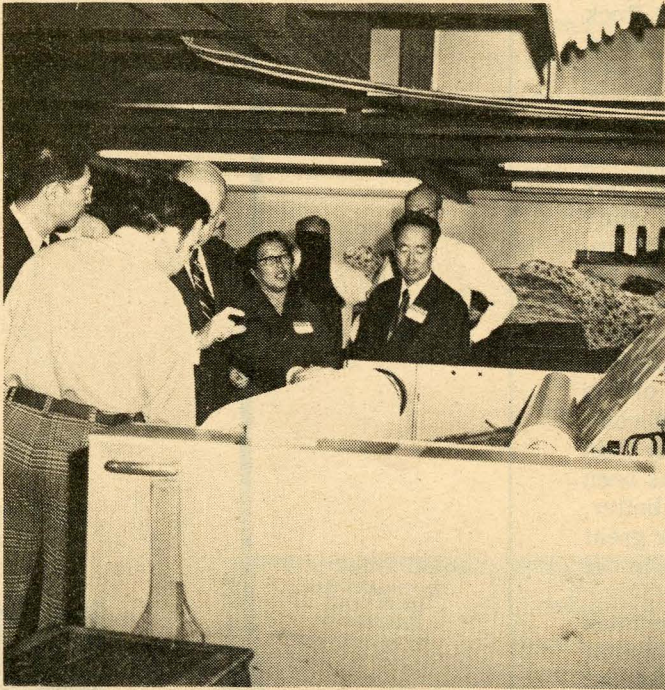
ment Section of the Textile Corporation Delegation at the Chinese Export Commodities Fair; Mr. Tsung Wen-tse Co-Manager of the Garment Section of the Textile Corporation; Miss Veronica Yhap; (slightly obscured from camera) Miss Suzanne Reynolds of the US-China Trade in Washington, D.C.; Mr. Walter Sharoff, Vice-President, Export Division, MLS headquarters in New York; Mr. Huang Tsien-mo, interpreter for the group and a member of the Chinese Export Commodities Fair; Madame Han Fan-yu, Deputy Director General of the Textiles Corporation, Peking and leader of the visiting delegation and William H. Grier, Jr., RHP & F Vice-President and General Manager.



—BRIEFING SESSION - William H. Grier, Jr., RHP & F Vice-President and General Manager conducts briefing for Chinese Textile visitors prior to conducting a tour through the Bleacher.



● *Rotary Screen Print*



● *Paper Print*



● *Transfer Printing*



● *Polyurathane Products*



● *Discussion*

'Looking Up'

By Joseph Anderer,
President And Chief Operating
Officer

M. Lowenstein & Sons has employees all over the Country, and in one way or another we are affected by the problems of our economy. All of us feel the effects of inflation every trip to the supermarket and many of us are affected even more directly through short time or layoffs.

Our industry was one of the first and hardest hit segments of the economy, and we have had to make a number of painful adjustments to meet these conditions. Like everybody else, we are cutting costs, trying to avoid waste and working harder than ever. In addition, we've always considered quality, service and the ability to adapt fast to changes in fashion and technology, to be the basis of our success, and we're all trying to sharpen these skills.

All of you have contributed a great deal to this Lowenstein way of doing business, which we are very proud of. This means ideas, and they come from everywhere, whether it's a new product, a new way to repair a machine, or a better system for handling some of the endless flow of communications that is the life blood of our huge Company.

For instance, we are one of the pioneers in a new, perhaps revolutionary, printing process called "heat transfer-printing", thanks to the foresight of our Research, Manufacturing, and Marketing Organizations. We are now the only company in the country which offers a completely integrated service for engraving, printing on paper and transferring these designs to fabric, with the obvious advantages of quality, service and cost. This process has a number of very significant advantages and its commercial applications are developing rapidly.

We have already converted one screen print machine at Rock Hill and will have two more converted before Summer. Our production will increase severalfold in the months ahead and shows promise of opening

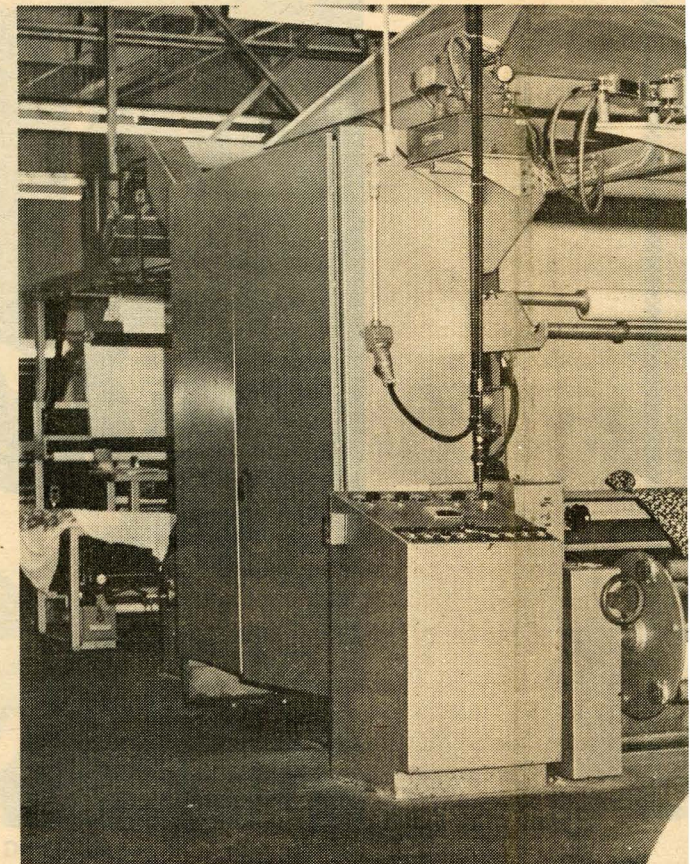
worldwide markets to our designers on a scale that we have never been able to achieve before.

Let's take another one—we introduced a line of urethane coated synthetic leather to the apparel, upholstery and shoe trades over the past several years. The product we've developed looks, feels and breathes just like leather—but is less expensive, has greater flexibility and is waterproof! Genesco Labs just did a study which reports that the supporting material for the urethane, called sub-strate and woven by Wamsutta I, is the strongest in the market, an important quality for such rugged uses as shoes and upholstery. To meet the demand, we've begun to build a new production line at Rock Hill that will more than double our present capacity.

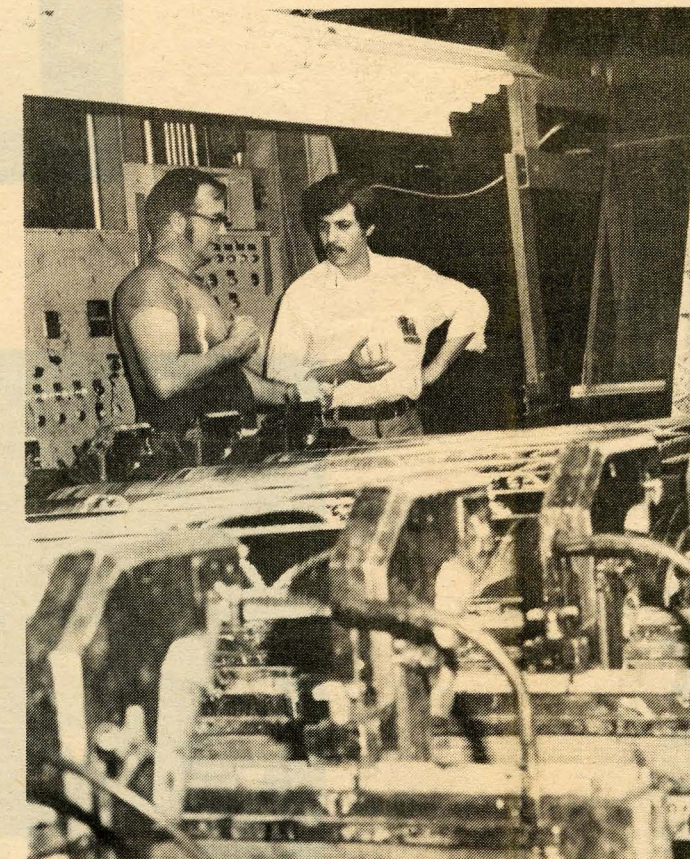
Let's look at a third area—fire retardant fabrics. We have devoted research and development time to this area for a decade and produced many firsts. Interest in these fabrics has mushroomed because of recently enacted legislation. As a result, we are installing new equipment at Rock Hill that will make even better products and expect to reach record levels of production this year.

Why do I mention these three? First, they are typical of the imagination that has built our Company, and secondly, they represent the spirit that is so important today as we struggle with the problems of our industry and our economy. They each involve Rock Hill, the plant that over the past 45 years has been a foundation of the company, but today is feeling competitive pressures more strongly than ever before. Their response has been something new, something better, and with that spirit they and our great company will continue to grow in the years ahead.

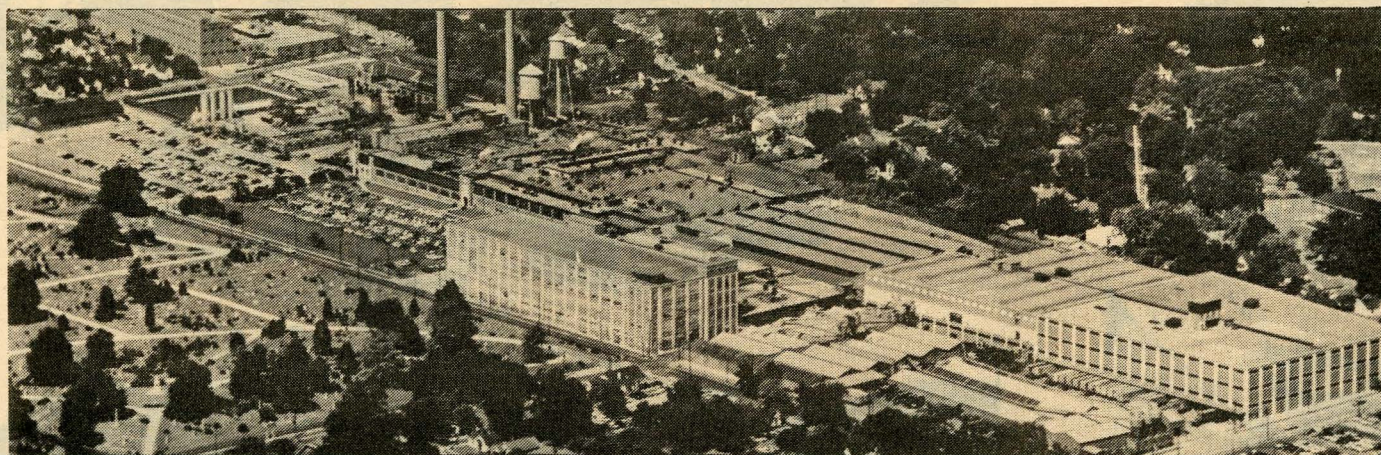
So, as we go into 1975 together, I will tell you that business is not as good as we would like it to be, but our business still pays a premium for innovation and service. All of us who have been thinking creatively and working efficiently to make this company one of the finest in the world, must be that much quicker this year, but the rewards are still there.



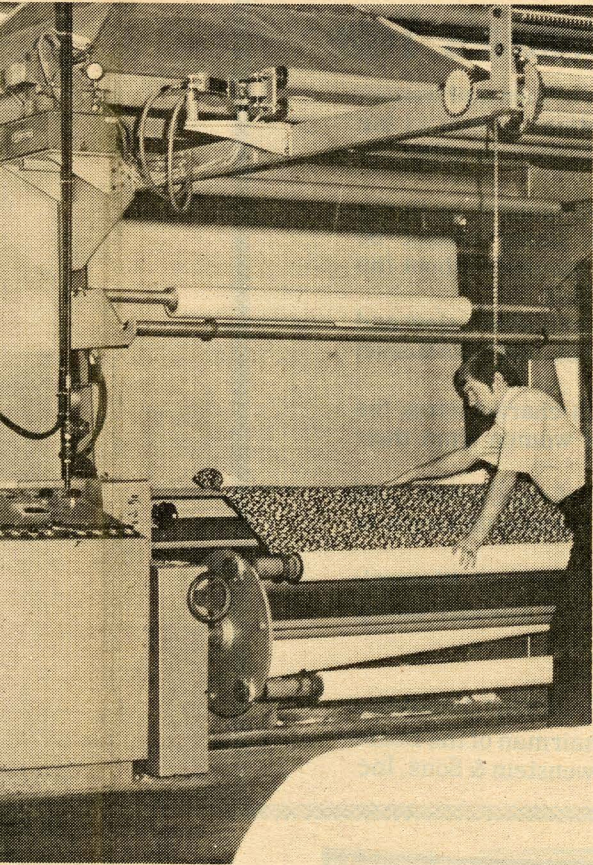
..... "We are one of the pioneers perhaps revolutionary printing process 'heat transfer-printing'... We are the only company in the country which offers a completely integrated service for engraving, printing on paper and transferring these designs to fabric with the obvious advantages of quality, service and cost. This process has a number of very significant advantages and its commercial applications are developing rapidly.



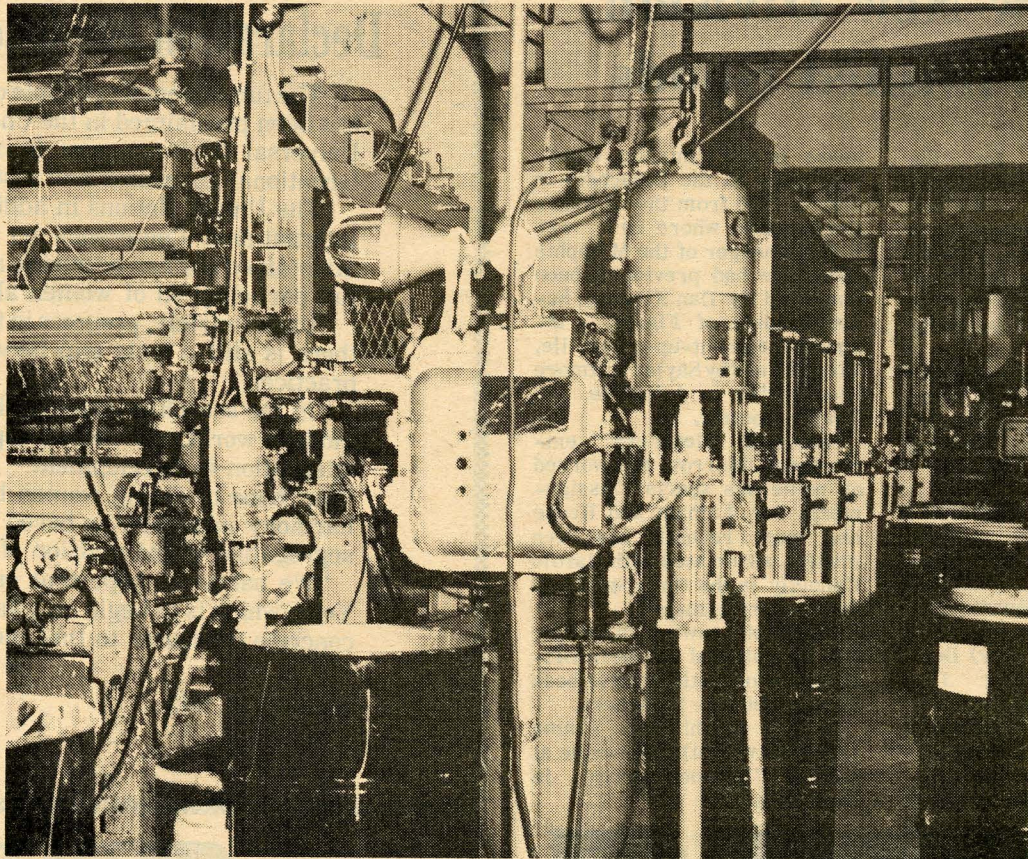
..... "We have already converted one screen print machine at Rock Hill (for heat transfer printing) and will have two more converted before Summer. Our production will increase severalfold in the months ahead and shows promise of opening worldwide markets to our designers on a scale that we have never been able to achieve before....."



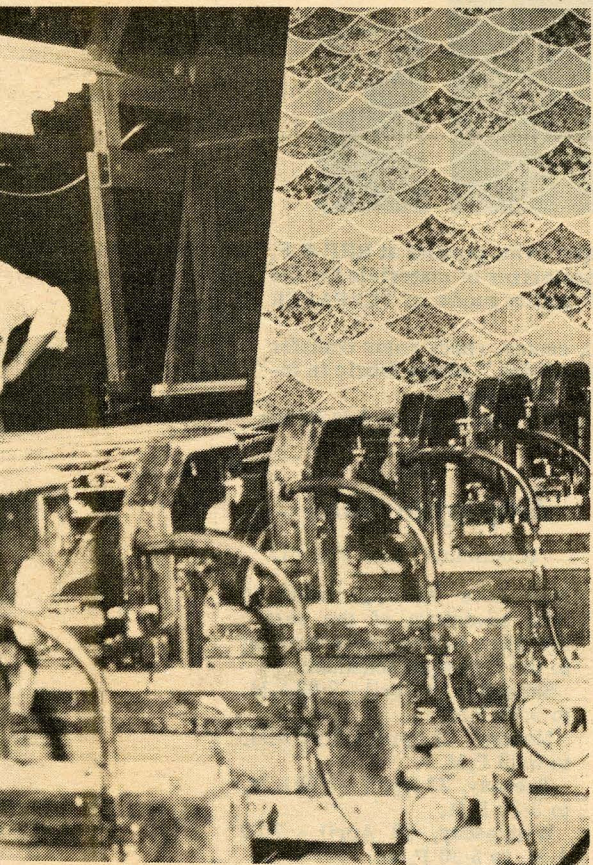
..... "They each involve Rock Hill, the plant that over the past 45 years has been a foundation of the company.....but today is feeling competitive pressures more strongly than ever before. Their response has been something new, something better, and with that spirit they and our great company will continue to grow in the years ahead....."



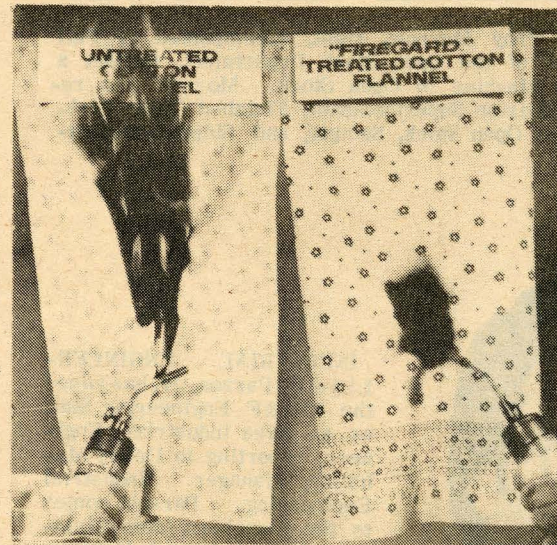
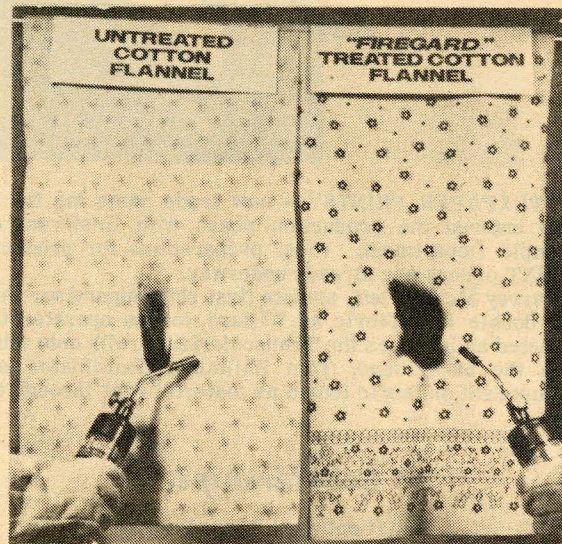
one of the pioneers in a new, primary printing process called 'dye transfer'... We are now the only country which offers a complete service for engraving, printing on fabric, and transferring these designs to fabric, with all the advantages of quality, service and speed. This process has a number of very important advantages and its commercial use is developing rapidly"



. "We introduced a line of urethane coated synthetic leather to the apparel, upholstery and shoe trades... The product we've developed looks, feels and breathes just like leather - - but is less expensive, has greater flexibility and is waterproof! . . . To meet the demand, we've begun to build a new production line at Rock Hill that will more than double our present capacity"



have already converted one machine at Rock Hill (for paper) and have two more converted. Our production will increase in the next few months and shows a bright future in worldwide markets to our customers that we have never been able to reach before"



. "fire retardant fabrics. We have devoted research and development time to this area for a decade and produced many firsts. Interest in these fabrics has mushroomed because of recently enacted legislation. As a result, we are installing new equipment at Rock Hill that will make even better products and expect to reach record levels of production this year"

Morrow New Division Chief Finished Goods

Troy E. Morrow, for the past year Special Assistant to Thomas J. Latham, RHP&F Vice President, Production has been appointed to the position of Division Superintendent, Finished Goods, reporting to C. A. Reese, Superintendent Plant #2.

Announcement of the appointment, effective March 5, was made by William H. Grier, Jr. Vice President and General Manager.

Three major departments within RHP&F comprise the Finished Goods Division—Shipping, Open Stock and Sample. Managers of these departments will now report directly to Morrow; M. B. (Floopy) Dunlap, Manager, Shipping Department; J. E. Sturgis, Manager, Open Stock Department and J. D. Anderson, Manager, Sample Department.

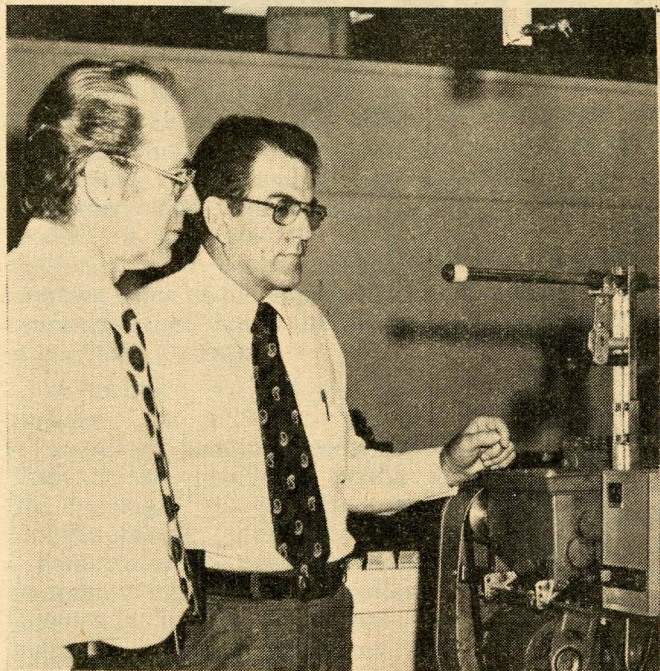
Morrow, a veteran of 30

years in the Finishing Industry, came to the Bleachery in March 1974 from the Whitaker Corporation where he was Plant Manager of the Memphis Plant. He had previously been employed by Dan River as Superintendent of Finish, Inspection and Put-up at Danville, Virginia and by Sayles Biltmore Bleacheries in Asheville in Quality Control.

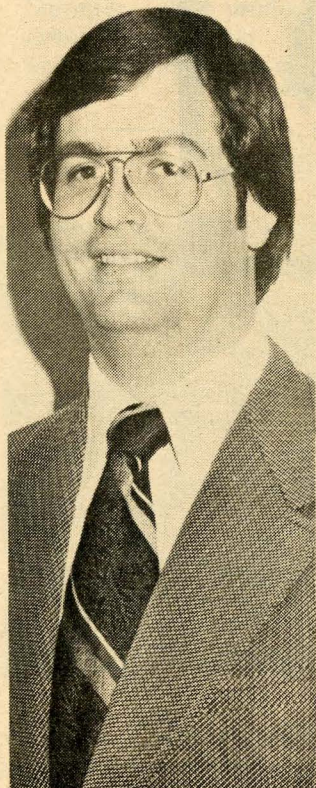
During his Bleachery employment, Morrow has worked on numerous special assignments for Latham and Reese and most recently has been closely associated with Harold Connelly in the Open Stock and Sample Departments.

Under Morrow's direction, the Kandell and Southern Distribution operations have been brought into the Bleachery.

Morrow and his wife Emma Lou and two children reside at 1416-B Flintwood Drive in Rock Hill.



INSPECTION - Troy Morrow, right, accompanied by Phil Moore, Supervisor of the Open Stock Department, inspect a Sample Spreading Machine in Open Stock. Morrow was recently appointed Division Superintendent, Finished Goods Division which includes Open Stock, Sample, and Shipping Departments.



Lloyd K. Parson, Jr.

INDUSTRIAL ENGINEER—Lloyd K. Parson, Jr. has joined the RHP&F Engineering Staff as an Area Industrial Engineer, reporting to Dewey Mahaffey, Manager Industrial Engineering. Parson comes to the Bleachery from Fieldcrest Mills in Eden, N.C. where he was employed as Textile Engineer. Prior to employment at Fieldcrest, he served in the same capacity at the J.P. Stevens Holly Plant at Wallace, N.C. His engineering duties at RHP&F will include cost reduction, production standards, machinery layouts, materials flow and handling. Parson is a graduate of N.C. State and holds a degree in Textile Technology. He and his wife Carrol, of Kings Mountain, N.C., plan to make their home in Rock Hill. Parson is a native of Greensboro, N.C.

Declaration on International Women's Year

"The fundamental principle of the equality of rights of men and women has been proclaimed in the Charter of the United Nations as well as the Universal Declaration of Human Rights, and reaffirmed in other international covenants and instruments.

"The United Nations in addition has repeatedly recognized, as in the International Conference on Human Rights, that peace cannot be maintained nor can economic and social progress be assured without the full participation of women alongside men in all fields.

"Unfortunately, progress in this direction has been extremely slow and there is still a wide gap between accepted principles and established practices.

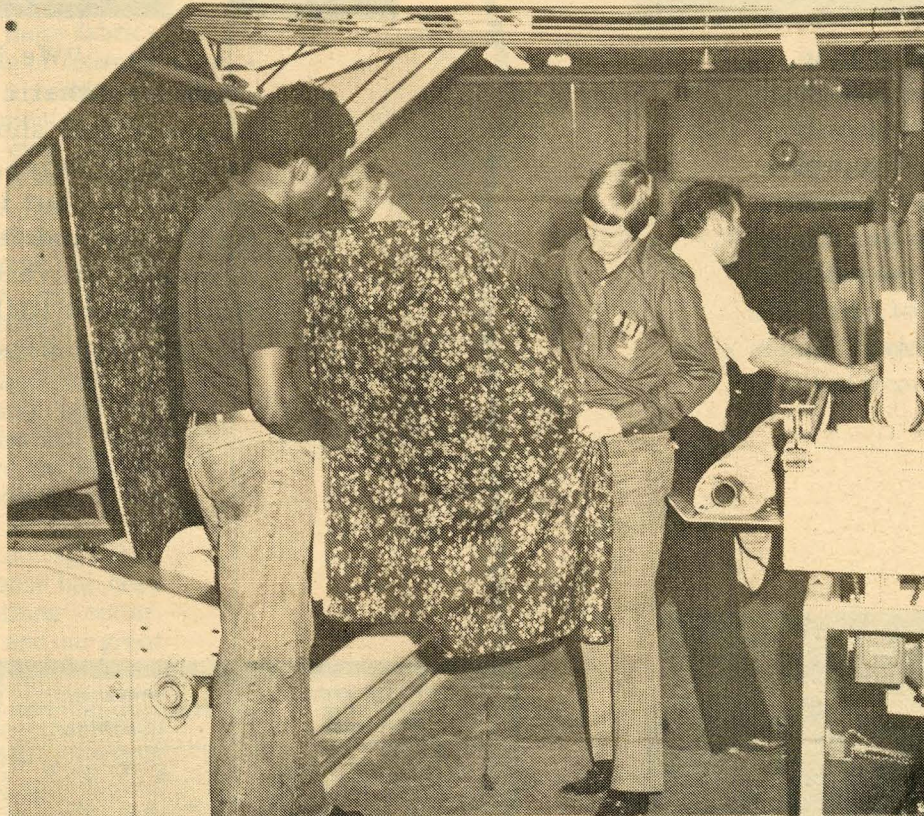
"In the search to improve the quality of life which characterizes the modern world, one cannot separate the progress of women from their integration in development.

"Our hope of seeing women become a new source of equilibrium and harmony in society is based on the elimination of traditional forms of segregation in the division of labor in general.

"We earnestly hope that on the occasion of International Women's Year, which is to begin on 1 January 1975, all States will consider taking concrete measures to this end."

January 15, 1975

Robert Bendheim
Chairman of the Board
M. Lowenstein & Sons, Inc.



"TEXPAPER PRINTS" - new trade name for the latest Transfer Print product at RHP & F, has entered the production phase with first runs on the Transcolorizer of materials for the Sample Department. Final preparations for production runs of quality goods of TEXPAPER PRINT orders are already underway.

Harvey McCoy, left, assists first shift Supervisor Tommy Alford, center, check color transfer on double knit fabric as Willard Jordan operated the "Inspection Point," where fabric is inspected as it leaves the Transcolorizer, rolls onto tubes - ready for shipment.

In the background, Tom Williams, Coordinator for Transfer Print Operations makes minor adjustment on fabric tensio as material runs through the machine.

Scholarships. . .

(Continued From Page 1)

Announcements of selected applicants will be made by about June 1, 1975.

School year 1975-76 will be the 28th year the two scholarships have been awarded. Since its beginning in 1948, fifty-two scholarships have been granted to qualified students.

In awarding the two scholarships, major consideration in the selection process will be based upon the academic record of the student. Generally, it will be required that the student graduate from high school be rated in the upper third of his or her class.

All applicants must take the Standard Scholastic Aptitude Test, either during their Junior or Senior year in high school, and submit a copy of the test

score when filing the completed application form.

The character and reputation of the applicant, along with need for financial assistance, leadership abilities in school activities and the student's intention to major in Textiles or related subjects, will also be weighed in the selection process. It is also expected that all students applying for the scholarships will attend a college approved by the company. Officials of M. Lowenstein and Sons, Inc. note with pride that the majority of recipients of the awards during past years have compiled outstanding records while in college and in their chosen professions. Many have continued their education and obtained graduate degrees.

Employee Sale. . .

(Continued From Page 1)

may have an opportunity to take advantage of the sale, facilities will be open according to the following schedule:

Saturday, 19 April - 9:00 A.M. to 5:00 P.M.

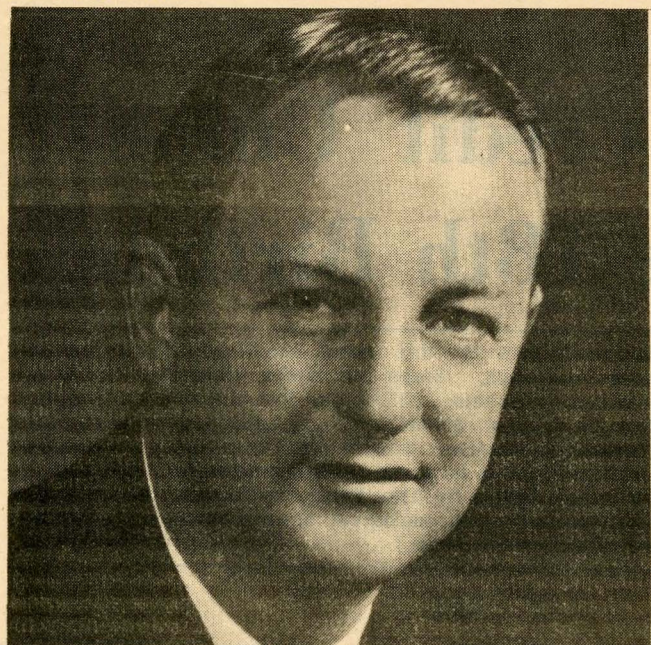
Monday, 21 April - 8:00 A.M. to 5:30 P.M.

Tuesday, 22 April - 7:00 A.M. to 5:30 P.M.

Wednesday, 23 April - 7:00 A.M. to 5:30 P.M.

Purchases will be limited to company employees and may be made either by cash or by roll deduction. Purchasers who elect to buy merchandise by payroll deduction are reminded that they must present a recent payroll check stub for identification at the time of sale.

Information concerning the sale will be posted on all plant bulletin boards.



ROBERT BENDHEIM

Robert Bendheim

Selected Top Textile Executive

Robert Bendheim, Chairman of the Board of M. Lowenstein and Sons, Inc. since January, 1972, has been selected by FINANCIAL WORLD magazine as one of the "Outstanding Corporate Chiefs of 1974."

Announcement of the recognition extended to Bendheim appeared in the March issue of FINANCIAL WORLD.

Bendheim was chosen by a group of 37 analysts from fields of business, industry and finance, each a renowned specialist in his field, for the "Certificate of Distinction Award as a Chief Executive Officer of the Year in the Textile Industry."

The analysts forming the selection group established by FINANCIAL WORLD, "set four criteria in choosing (selectees) from thousands of the nations' Chief Executive Officers, persons at the helm of America's major corporations upon whose talents rest the future of our nation's business." All points of criteria "emphasized both business know-how and the broader influence of top people eligible for the award."

According to FINANCIAL WORLD, "Selecting these outstanding corporate heads was no easy task. Analysts spent several weeks combing financial statistics and operating data in industries they covered. In many cases they consulted with other specialists in their field or colleagues who might have additional insights to shed on the particular problems or personalities that lead to the top rungs of corporate or industry leadership. It is a truism in the financial community that excellence in management can only result in a top notch business effort that will eventually show its head above its competitors."

Second Coating Range...

(Continued From Page 1)

William H. Grier, Jr., RHP & F Vice-President and General Manager stated, "The arrival of the new Coating Range at the Bleachery is part of the initial phase of a four year plan for expanding the Coating Operations. The new Range will increase production by 150% and will enable Rock Hill to produce several products it is now unable to produce."

"In recent months," Grier continued, "our Coating Division has developed a very fine line of marketable high fashion-line of marketable high fashion-polyurathane products. They are being well received in the market place. The product

is a synthetic leather designed and fashioned for apparel, shoes, boots, handbags and upholstery. It is not as expensive as leather but more expensive than vinyl. The product can "breathe;" it sheds water; is highly flexible and can be dry cleaned."

Grier concluded, "I will continue to emphasize, it will be our policy at RHP & F to continue our efforts at diversification; up-date our equipment, procedures and methods, apply new ideas and get the best return possible for our investment. This will give a more stable, and a more profitable operation in the future."

Esther Bailey

Retires After 33 Years At RHP&F

On December 7, 1942 during World War II, on the first anniversary of the bombing of Pearl Harbor, a lady who was destined to become one of the most beloved and delightful members of the "Bleachery Family" finished her first day of employment at RHP&F. Now, 33 years later, she bids farewell to the myriad of friends she leaves behind at the Bleachery and joins the untold number of her friends in retirement and in the community.

Esther Patton Bailey, Payroll Section of the Controller Department retired during March. At a retirement ceremony held at the end of the work day, Esther was paid tribute and presented with gifts by a number of her friends.

Hubert Whitton, RHP&F Controller, said of Esther upon her retirement, "There will never be another Esther Bailey. Her personality, happy, cooperative attitude; her loyalty, efficiency and boundless understanding seemed to radiate throughout the office contributing to a congenial, smooth-working day-every day. In short, Esther brought to this office the dignity and devotion of a most gracious lady. We miss her already."

Whitton said, "I think that she must have 'opened the store' everyday, because she was always here when others reported for work at the normal time."

One lady in Payroll (who wished her name to be withheld) said, "Esther is one of a kind. A lot of people have to cultivate friends, but not Esther. If anyone was in her presence for a second, they became her friend. Not only that, I think she must remember everyone she has ever met."

One of Esther's two daughters, Mrs. Betty Bailey Culp of Fort Mill attended her retirement ceremony. The other daughter, Mrs. Esther Bailey Jeffery lives on Long Island with her family at Fort Washington, N.Y.

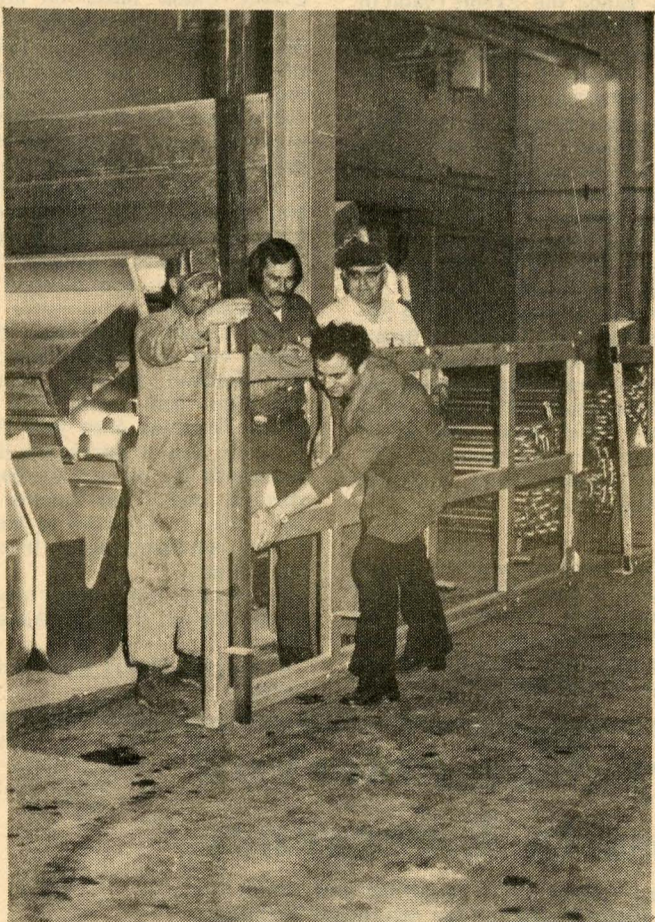
Esther says, "Betty has two daughters and Esther Jeffery has one son and one daughter. That gives me four wonderful grand children. This makes life just four times as sweet."

Another of Esther's friends in Controller Department told the Beacon that "Esther loves to cook and sew and she is an expert at both." But apparently Esther is going to hold both these endeavors to a bare minimum. She said, "My hobby is going to be doing whatever I want to do, whenever I want to do it, how I want to do it. Not

only that, I've been regimented by that clock on my dresser for so long, I think I'll just let it run down."

An appropriate Editorial Comment at this point would be: "Not so Esther, not so. We all know you too well."

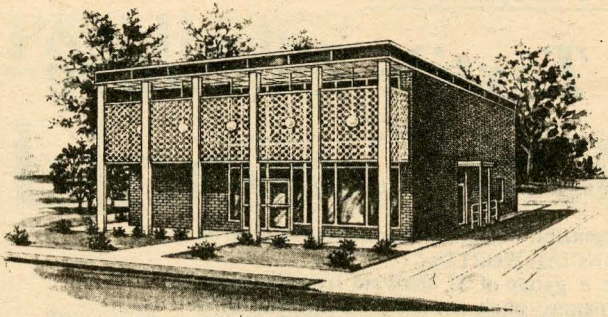
Esther plans to continue residing at 618 Charlotte Avenue in Rock Hill.



FIRST THINGS FIRST - Garth Biggers, Bill Smith and Homer Fennfield, all from Mechanical Department, assist Technician Rovetti Arcangelo, manufacturing representative from Vicenza, Italy in position-balancing a side stanchion of the new Polyurathane Range being installed in the Grier Division.



RETIREMENT - Esther Bailey, completing 33 years of Bleachery employment in the Payroll Section of the Controller Department, was showered with gifts and best wishes at her retirement ceremony during March. Shown holding a silver serving dish, Esther is seated with her daughter, Bette Culp of Fort Mill. Friends peering over Esther's shoulder are left to right: Jane Cabaniss and Carolyn Comer of the Cost Department; Janice Broome, Trucking Division; and Carrie Adams and Virginia Massey also of the Cost Department.



Happy Birthday!

RHP&F Credit Union Celebrates 18th Birthday

(Editor's note: Eighteen years ago this month, the RHP & F Federal Credit Union was born. Seven employees pledged \$5.00 each for membership. Assets: \$35.00 and lots of wide-spread interest. Today's Assets: \$5,886,489.50....4,174 members....a modern building....Director with a staff of 6 full-time employees....and recognition as an outstanding community institution. The following article by Alex Wolfe, Treasurer/Manager, sets for the record a chronological account of the beginnings and growth of the Credit Union.)

BY ALEX WOLFE



BIRTHDAY PHOTO - Alex Wolfe, left, Treasurer, poses with Beverly Crisp, Loan Interviewer and Norma Sargee, Assistant Treasurer at the RHP & F Federal Credit Union on the 18th birthday of the Credit Union. Also on the Credit Union Staff are: Albert Hargrove, Collection Manager; Annie Poag, Secretary; Brenda Pettus, Loan Officer and Cindy Stone, Receptionist.

After a number of months negotiations by several employees of the Rock Hill Printing & Finishing Company, seven employees pledged \$5.00 each and signed an application for a Federal Credit Union Charter on February 12, 1957. The seven charter members were: W. B. Byers, Grady H. Cole, Reid Roach, Ivey Cornwell, Lewis H. Balthis, Alma S. Hughey and Z. T. Sanders. The charter was approved by the Bureau of Federal Credit Unions on February 26, 1957. An organizational meeting was held on April 2, 1957 in the Conference room. (The Conference room, and all of the companies office space, was on the second floor of the building recently constructed at the corner of Laurel and White Streets.) Mr. James Huggins, Examiner for the Bureau of Federal Credit Unions, now the National Credit Union Administration, talked on the benefits and obligations of a Credit Union.

The Charter members voted to extend voting rights to all potential members present. Mr. W. B. Byers was elected Temporary Chairman and Edith Whitener was elected Temporary Clerk. Mr. Byers asked for nominations for the Board of Directors and Grady Cole, Alex Wolfe, Agnes Holler, Joe Steele and W. A. Tipping were nominated and elected. Byers asked for nominations for Credit Committee members and Reid Roach, Alma Hughey and Robert Carter were nominated and elected. Byers asked for nominations for Supervisory Committee members and Fred White, W. L. Reeves and W. B. Byers were nominated and elected. Byers then announced that Mrs. June Hollis had agreed to assist in the Credit Union office and the company would pay her salary and other bene-

fits until the Credit Union was financially able to assume the obligation. He also announced that the company had agreed to supply space and a desk in the office supply room for beginning the credit union operation. After the organizational meeting had adjourned, the Board of Directors met and elected Grady Cole, President, Alex Wolfe, Vice-President, W. A. Tipping, Clerk and Agnes Holler, Treasurer. The Credit Committee met and elected Reid Roach, Chairman and Alma Hughey, Secretary and the Supervisory Committee met and elected Fred White, Chairman, and W. L. Reeves, Secretary. The Directors met with Mrs. Hollis and completed plans to start immediately accepting applications for membership and deposits. They set June 1, 1957 as the date to begin making loans with a loan limit of \$50.00.

Over 1,000 Bleachery employees joined the Credit Union in the first three months of operation. One thousand eight hundred twenty-five had joined by the end of December, 1957. This created a tremendous work load for the one credit union employee and because no one had any experience, problems developed rapidly. A couple of the Directors worked in the Credit Union office two nights each week for several months. No pay was allowed for these Directors. This led to the Board of Directors employing its second Credit Union employee in December, 1957. The company paid this employee's salary for nine months. The third employee was employed in May, 1958.

The company and the Credit Union shared the expense of remodeling a gate house into office space where the Personnel office is now located. The Credit Union moved into

its "new" building in the summer of 1958, but outgrew this space in two years. In 1960, the company purchased the store building on the corner of White and Wilson Street and agreed to remodel this building and rent it to the Credit Union. The Credit Union moved into the building in the fall of 1960. When the Credit Union was organized, the legal name was R. H. P. & F. Company Employees Federal Credit Union. The length of the name was cumbersome and a number of members were concerned about it. Therefore, the Board of Directors voted at a meeting in April, 1961 to request a change of name in our Charter to RHP & F Federal Credit Union. More and more work and responsibility was placed on the Board of Directors as the Credit Union grew. In October, 1961 they employed a manager and placed some of their responsibility and all of their Credit Union labor on him. The Credit Union grew very fast in the sixties. In 1965, the Board of Directors felt that the Credit Union again needed more space and started making plans to construct our present building. The building was completed in the spring of 1967 and in May, 1967 the Credit Union moved in. The Credit Union has already paid for the building and it now belongs to the members. The Credit Union pays the entire cost of its operation; a 6% dividend payable semi-annually; sets aside 10% of gross earnings each year for possible losses; purchases life insurance for savers and borrowers, and if any income is left, this is returned to borrowing members as an interest refund. On this 18th anniversary of our Credit Union, the total Assets are: \$5,886,489.50 and 4,147 members.

RHP&F

Federal Credit Union

Financial Statement

MARCH 31, 1975

Assets

| | |
|--------------------------|-----------------------|
| LOANS (3222)..... | \$4,584,474.64 |
| CASH IN BANK..... | 15,200.00 |
| INVESTMENTS..... | 1,252,868.66 |
| OTHER ASSETS..... | 33,946.20 |
| TOTAL ASSETS..... | \$5,886,489.50 |

Liabilities

| | |
|--|-----------------------|
| SHARES (4147)..... | \$5,295,471.78 |
| ACCOUNTS PAYABLE..... | 54,870.36 |
| RESERVES..... | 431,210.70 |
| OTHER EQUITY..... | 104,936.66 |
| TOTAL LIABILITIES AND EQUITY..... | \$5,886,489.50 |

Bleachery Aids American Red Cross In Emergency

In mid-March, Mary Colvin, local American Red Cross Director, sent a plea to RHP&F officials for emergency assistance for the Red Cross chapter in Rock Hill. Within the hour the Bleachery had answered the call. Due to unusually prolonged rain and cold weather in the area, the Red Cross emergency stockpile of coal, collected for needy families during warmer months, was fast depleting. So were Red Cross funds allocated for the coal purchases, while temperatures remained low in the 30 and 40 degree bracket. Given the "green light," Red McClintock, Supervisor of Yards and Laundry, dispatched a six ton dump truck, driven by T. B. McMullin, to the Power Plant "standby coal pile" where Boyd Roach, Manager of the Power Plant, directed the coal loading. The coal was delivered by McMullin to the point designated by the Red Cross where needy families, equipped with certificates from the Red Cross, received their bag of coal.



51 Join 20 Year Club

Service Clubs Continue Rapid Growth

Bleachery Service Clubs, registering employees according to longevity of employment at RHP&F, continue to grow with each passing month. During the two month span of March and April, 71 employees were listed as having reached the next plateau in length of employment at the Bleachery, with 51 of this group joining the 20 Year Club. Names, Departments and dates of employment of Service Club members follows:

| 10 YEAR CLUB | | (MARCH)ANNIVERSARY DATE |
|---------------------|-----------------|-------------------------|
| None | | |
| 15 YEAR CLUB | | |
| James R. Roach | Frames | 3/1/60 |
| Fred B. Fling | Calenders | 3/28/60 |
| 20 YEAR CLUB | | |
| Danny Walters | Custodial | 3/1/60 |
| Carolyn W. Comer | Office | 3/8/60 |
| Elfrida A. Wylie | Sample | 3/7/55 |
| Garth N. Biggers | Mechanical | 3/14/55 |
| Julian Chisholm | Custodial | 3/14/55 |
| Lawrence E. Hawkins | Printer | 3/14/55 |
| Manuel Hefner | Print | 3/14/55 |
| Floyd L. Jordan | Print | 3/14/55 |
| James B. McManus | Print | 3/14/55 |
| Thomas E. Pursley | Nappers | 3/14/55 |
| R. L. Settlemeyer | Nappers | 3/15/55 |
| Clarence J. Duncan | Sanforizers | 3/24/55 |
| Raymond N. Eades | Print | 3/28/55 |
| Randall F. Hoover | Mechanical | 3/23/55 |
| William H. Monroe | SC Print | 3/29/55 |
| Donald R. Sweatt | Color | 3/28/55 |
| James R. Williams | Nappers | 3/29/55 |
| Sara F. Dickson | Sample | 3/30/55 |
| Nellie M. Mullinax | Sample | 3/30/55 |
| Thelma A. Cassidy | Office | 3/21/55 |
| Iris O. Ligon | Office | 3/21/55 |
| Barnette Nichols | Mechanical | 3/21/55 |
| Julian R. Pettit | Prt. Swings | 3/22/55 |
| R. C. Rayfield | Quality Control | 3/28/55 |
| 25 YEAR CLUB | | |
| Charlie G. Campbell | White | 3/6/50 |
| Thomas E. Stowe | Prt. Swings | 3/3/50 |
| Bonnie Watts | Printer | 3/6/50 |
| Floyd Childers | Color | 3/29/50 |
| Robert P. Dickson | Packing | 3/24/50 |

| 35 YEAR CLUB | | (APRIL) ANNIVERSARY DATE |
|------------------------|------------|--------------------------|
| None | | |
| 10 YEAR CLUB | | |
| Paul K. Harris | Color | 4/15/65 |
| Barbara B. Matthews | Lab | 4/12/65 |
| James H. Dove, Jr. | Print | 4/19/65 |
| 20 YEAR CLUB | | |
| Ernest Barnette | Stock Room | 4/5/55 |
| Willie Knox, Jr. | Shipping | 4/4/55 |
| Nathaniel Marshall | Mechanical | 4/5/55 |
| Audubon Sanders | Nappers | 4/4/55 |
| Bessie L. Bolin | Packing | 4/18/55 |
| Frank Brazzle | Mechanical | 4/12/55 |
| Barbara W. Cooke | Packing | 4/18/55 |
| Robert F. Hall | Packing | 4/11/55 |
| Emma B. Howell | Packing | 4/18/55 |
| Jerry L. Moss | Color | 4/19/55 |
| Ann P. Sexton | Packing | 4/18/55 |
| Martin L. Smith | Mechanical | 4/11/55 |
| Evelyn Brasington | Packing | 4/21/55 |
| Robert H. Cooke | Packing | 4/27/55 |
| Louise M. Crenshaw | Sample | 4/21/55 |
| Oscar Gill, Jr. | Packing | 4/25/55 |
| Charles H. Harvey, Jr. | Soapers | 4/21/55 |
| Estelle Kennington | Sample | 4/21/55 |
| Frances N. Love | Sample | 4/20/55 |
| Laura K. Phillips | Packing | 4/28/55 |
| Elizabeth C. Strait | Sample | 4/20/55 |
| Mary S. Cornwell | Office | 4/5/55 |
| Mary E. Proctor | Office | 4/5/55 |
| John R. Poore | SC Print | 4/20/55 |
| Annette Marthers | Office | 4/21/55 |
| E. H. Honeycutt | Color | 4/26/55 |
| 25 YEAR CLUB | | |
| Thomas H. Baskin | Rayon Fin. | 4/5/50 |
| William R. Harris | Print | 4/5/50 |
| 35 YEAR CLUB | | |
| Ernest M. Boling | Packing | 4/17/40 |
| Marshall M. Dickson | Color | 4/17/40 |
| Robert J. Brown | White | 4/26/40 |
| Charles H. Belk | Shipping | 4/16/40 |
| James B. Mayo. | Office | 4/29/40 |

J. T. Martin Selected Guardsman of Year



GUARDSMAN OF THE YEAR - James T. Martin, Jr., Engraving, receives congratulations from C. V. "Dodie" Jenkins, Manager of the RHP & F Engraving Department. Martin was awarded a bronze plaque by the Rock Hill Junior Chamber of Commerce honoring him as the "National Guardsman of the Year for 1974." Mary Dawson, left and Marion Sealy right, also of the Engraving Department, take part in congratulations extended to Martin.

James T. Martin, Jr., Bleachery employee since 1966 in the Engraving Department, has been awarded the distinction of "National Guardsman of the Year for 1974" by the Rock Hill Junior Chamber of Commerce.

Martin, a member of the National Guard for 11 years, holds the rank of "Specialist 5" as a Senior Medical Aid Technician in the Headquarters Company, 263rd Armored Battalion of the Brigade in Rock Hill. The 218th Brigade includes guard units based in Rock Hill, Fort Mill, Clover, York and Gaffney.

In making the award to Martin, the "Jaycee" citation read in part, "Chosen for distinguished performance in his field or vocation based on nominations from the community at large, with final selection by a committee of the Junior Chamber of Commerce."

Martin received the award for his "outstanding performance of duties in the National Guard Medical Unit during 1974." He was selected and nominated for the coveted Jaycee award by a committee of the 218th Brigade, composed of Battalion Staff Officers, Company Commanders and Platoon Sergeants. The Bronze Plaques was engraved "National Guardsman of the Year - To SP-5 James T. Martin, Jr. - By Rock Hill Jaycees - 1974."

In 1973 Martin also received the "Army Reserve Components Achievement Award" from the Governor of South Carolina.

Martin came to work at the Bleachery during 1966 shortly after attending York Technical College in Rock Hill.

Martin's wife, Katherine, is a teacher at Bethel School in the Clover District.

THOUGHTS...

RHP & F is the largest Textile Printing Plant in the world. This is a fact. It follows that it would be the largest on this planet. Since little is known about life in outer space at this time, wouldn't it be safe to assume that RHP & F could be the largest Textile Printing Plant in the Universe? (Anyone with universal, first hand, contradicting evidence to the contrary, please come forward.)

SAFETY STANDINGS

LOST TIME ACCIDENT SCOREBOARD MARCH 1975

| Department | Mn/Hrs | L.T. Acc. | L.T. Freq. |
|----------------|------------------|-----------|-------------|
| BLEACH | 10,370 | 0 | 0 |
| COLOR | 42,038 | 0 | 0 |
| DYE | 23,127 | 1 | 43.2 |
| ECONOMY | 3,482 | 0 | 0 |
| ENGRAVING | 16,725 | 0 | 0 |
| FINISH | 71,855 | 3 | 41.7 |
| GREIGE | 22,769 | 0 | 0 |
| LABORATORY | 13,557 | 0 | 0 |
| MECHANICAL | 94,976 | 2 | 21.1 |
| NAPPERS | 17,775 | 0 | 0 |
| OFFICE | 296,085 | 1 | 3.4 |
| OPEN STOCK | 27,652 | 0 | 0 |
| PACKING | 142,753 | 0 | 0 |
| PLISSE | 1,174 | 0 | 0 |
| POWER | 11,024 | 0 | 0 |
| PRINT | 165,779 | 3 | 18.0 |
| RAYON | 19,829 | 0 | 0 |
| SAMPLE | 15,304 | 0 | 0 |
| SCREEN PRINT | 46,619 | 0 | 0 |
| SHIPPING | 29,632 | 0 | 0 |
| SOAPERS | 28,967 | 2 | 69.0 |
| STOCKROOM | 4,411 | 0 | 0 |
| WHITE | 39,335 | 2 | 50.8 |
| YARD & LAUNDRY | 19,332 | 0 | 0 |
| TRUCKING | 23,681 | 0 | 0 |
| SPECIALTY | 12,741 | 2 | 157.0 |
| TOTAL | 1,202,003 | 16 | 13.3 |

The 13.3 lost time frequency compares unfavorable with the 10.7 frequency of the last quarter of last year, and the 10.2 frequency for all of last year.

Of the 16 "lost time" accidents, all but two or three at the most, could have been prevented through the exercise of more careful attention to the work and activity by the injured person.

Fortunately, most of these accidents, although "lost time," were not of the devastatingly serious type.

However, there is a warning there for all to heed, that serious consequences await the careless and inattentive person on the job.

Want Ads

FOR SALE: 1972 Ford Grand Torino. Contact Peggy Roddey, 328-5522 after 5:00 P.M.

FOR SALE: 1968 Oldsmobile '98. Ear. McClain, Phone 366-4893.

FOR SALE: 1972 Dodge Pickup and 1968 Bee-Line Camper. Both for \$1,700.00. Call Grady Mullinax 328-3780.

FOR SALE: 1973 Traveler Travel Trailer. Call Bill Brunton 366-5008.

FOR SALE: 1964 Diesel International Tractor. See at Small Engine Service. Price \$2,000.00.

FOR SALE: 3 Bedroom Brick House on 1.3 acres in Newport Area. \$33,000.00. Call 366-2598 after 5:00 P.M.

FOR SALE: 4.8 Acre Lot. 280 feet on paved road. Call Calvin Hicklin 328-3330.

FOR SALE: Two adjoining lots. Contact the Credit Union Office.

FOUND: Hat and sweater left at "5% Seconds" meeting at Winthrop in March. Call A.M. HAND 373 and identify.

FOR SALE: 1971 Ford, Pickup-Camper Special. \$2,200.00. Telephone: 327-9877.

FOR SALE: 19 Cubic Foot Frost Free Refrigerator. Call 327-4067 after 3:00 P.M.

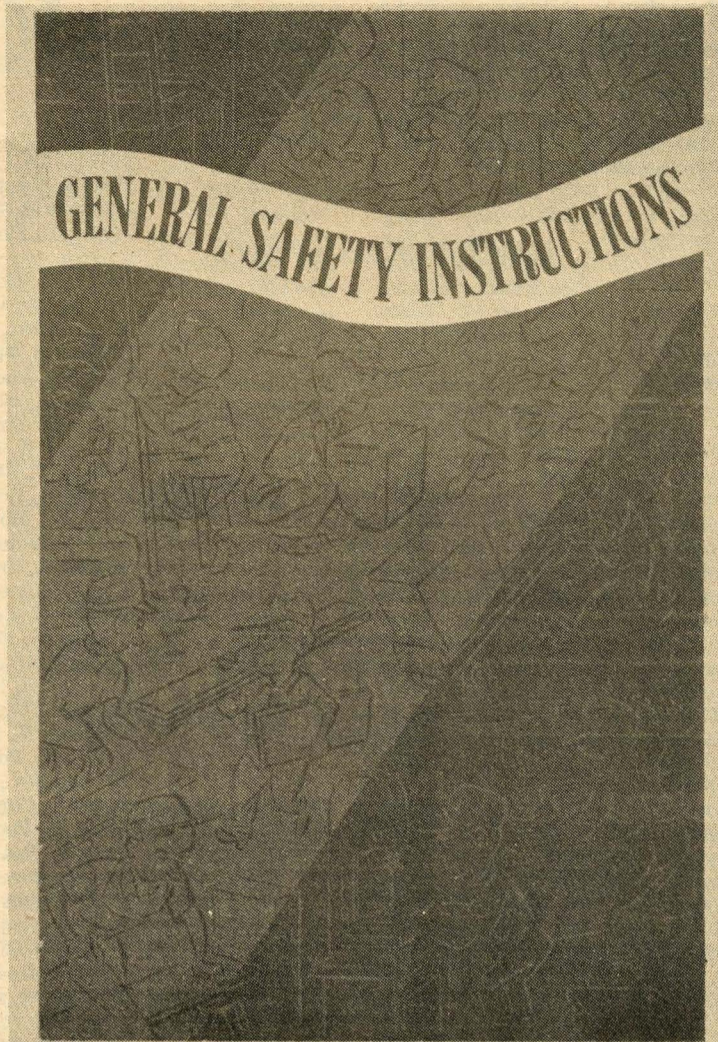
FOR SALE: Home on 1 Acre of land. \$10,000. Call Furman i. passmore. Telephone: 327-9877.

FOR SALE: Three 5,000 BTU Air Conditioners. \$200. Telephone 547-4058.

FOR SALE: 1 Acre Lot in Ebenezer. \$4,000. Call Ernest Hamrick. Telephone 327-1733.

Carelessness Biggest Hazard

Safety Booklet Alerts Employee



SAFETY INSTRUCTIONS - As a service to Bleachery Employees, a copy of the above booklet has been distributed to each employee. The brochure points up "carelessness" as the number one hazard to a worker's Safety.

A copy of a comprehensive, 20 page booklet entitled "General Safety Instructions" was recently distributed to all Bleachery Employees along with each paycheck. The booklet was procured by the RHP & F Safety Office from American Insurance Association as a service to each employee to briefly but effectively point out the folly of "taking safety for granted."

Designed to remind the employee to be conscious of Safety in his work, the booklet points out the many hazards that abound in any ordinary place of work and underscores the biggest safety pitfall, that of being careless.

The booklet points out that there is no such thing as "fate" where accidents are concerned. The idea that accidents are unavoidable and will always happen is wrong. In fact, most accidents can be avoided by use of common sense. For example, an individual who chooses to use a well designed and safe ladder in an unsafe manner is needlessly risking injury to himself and possibly others.

Ladders and scaffolds, machines, electricity, lifting, safety equipment, hand trucks, foolish haste, day-dreaming, etc. are but a few of the items discussed, purely for the safety of the individual, NOT to improve a statistic.

In distributing the booklet, George Brandt, Bleachery Director of Safety, stated that, "Over the past several years, the overall accident record of the Bleachery has improved because the individual employee cares. But improvement is not as great as it should be. There is still quite a way to go before our accident frequency rate will be at an acceptable level. A single accident can be one accident too many. Our out-of-line accident cost is just as much an item of waste as spilled dyestuff or water and heat leaks, but more important accidents involve a human being. Today's economy is unforgiving of waste. Only through the help of the employee can we reduce waste - to himself and to the company."

Bloodpressure Checks Continue For Employees



Wise Bleachery employees continue to respond daily, taking advantage of free Blood Pressure readings at the First Aid Station, availing themselves of this additional medical service extended to all Bleachery employees at no cost. To date, more than 1,000 employees representing every department in the plant have reported for readings.

Blood Pressure checks are still being taken by departments, on each of the three shifts, being scheduled by First Aid personnel. The only requirement on the part of the employee is that he let his supervisor know if he plans to absent himself from the department to take the reading.

The continuing program to survey Blood Pressure of employees at the Bleachery, was launched last September when RHP & F extended its full cooperation to the South Carolina

Heart Association which is conducting an industry-wide survey of employee blood pressure readings.

All readings taken of Bleachery employees are held in strict confidence and the employee's name is in no way associated with data furnished the Heart Association. Records will not be kept at RHP & F nor will any reading results become a part of the employee's personnel record.

Each employee will be advised of his Blood Pressure reading and whether or not he should consult his family physician. At no time will medical treatment be extended to the employee by personnel of the Aid Station.

Although all Bleachery personnel are encouraged to avail themselves of these Blood Pressure readings, participation by the employee is strictly on a voluntary basis.



DON'T ABUSE IT...

... USE IT!