



9-1-1916

## The Chester News September, 1916

W. W. Pegram

Stewart L. Cassels

Follow this and additional works at: <https://digitalcommons.winthrop.edu/chesternews1916>



Part of the [Journalism Studies Commons](#), and the [Social History Commons](#)

---

### Recommended Citation

Pegram, W. W. and Cassels, Stewart L., "The Chester News September, 1916" (1916). *Chester News 1916*. 78.

<https://digitalcommons.winthrop.edu/chesternews1916/78>

This Newspaper is brought to you for free and open access by the The Chester News at Digital Commons @ Winthrop University. It has been accepted for inclusion in Chester News 1916 by an authorized administrator of Digital Commons @ Winthrop University. For more information, please contact [digitalcommons@mailbox.winthrop.edu](mailto:digitalcommons@mailbox.winthrop.edu).

# CHESTER FAIR BOOSTER

VOL. 1. NO. 1.

SEPTEMBER 1916.

SUBSCRIPTION FREE

## THE CHESTER COUNTY FAIR

### WILL BE HELD OCTOBER 17--20

Will Be conducted this year by the Chester Chamber of Commerce

**THE ADMISSION PRICE:**—What is expected to be the largest and best County Fair ever held in Chester County is being planned for Tuesday October 17, Wednesday October 18, Thursday October 19 and Friday October 20. Nothing is being left undone by the Chamber of Commerce to make this Fair a success. Everything possible is being done for the pleasure and comfort of the visitors; there will be ample space for the exhibits of each of the different departments and it is hoped that there will be large exhibits arranged by the farmers of the county. The price of admission to the Fair has been placed at twenty-five cents for adults and fifteen cents for children instead of the usual fifty cent admission. Whether visitor, exhibitor or regardless of your reason for being in the fair grounds, it is our intention to render polite, courteous service to all. We wish to provide every possible means for your comfort and convenience. You will confer a favor on the management by reporting any inattention or lack of service to the President or Secretary.

**FREE ATTRACTIONS:**—In providing free attractions for this year's Fair we endeavored to secure the best attractions that could be booked—attractions that would appeal to all. Two big free acts will take place twice every day in front of the grand stand,—one of them—Sensational Smithson, is perhaps the most spectacular exhibition ever seen in this section. Starting 50 feet high and riding a bicycle on a 2 foot incline 90 feet long, he jumps a gap 34 feet wide to another platform. At night he has a fire display that is very hazardous and very beautiful. This is the original "Sensational Smithson" that has been the wonder of thousands at State Fairs and at fairs in the larger cities for the past several years. He has been secured at a great expense and has been recommended to the management of the fair as the one man who has the biggest and best "thriller" ever presented to an American audience. For the second free act we have secured the Stirwell family, five of the best acrobats performing today. They will present both afternoon and evening over 20 minutes of tumbling, pyramid building, head-on-hand balancing, contortion front and back bending, hand balancing, hand to foot somersaults and other acrobatic and gymnastic stunts, ending with a sensational pyramid revolving act. "Curly Head" and "Felix," two small children of the troupe are the laugh producers. This performance is especially pleasing to the ladies and children.

**MIDWAY:**—Good clean shows, a merry-go-round and ferris wheel have been secured for the Midway. These shows are furnished by the Big Four Amusement Company, one of the best of the attraction companies on the road today. No immoral act or gambling will be permitted on the Midway.

**MERCHANTS AND MANUFACTURERS EXHIBIT:**—Displays by Chester county merchants and manufacturers will form one of the most interesting and profitable of the exhibits of the fair. Many merchants and manufacturers of the city and of the county are already planning their exhibit. A large silver loving cup will be awarded the merchant or manufacturer having the best display in this exhibit. This is a new feature for this year and will prove most interesting to the visitors.

**THE DAILY PROGRAMS:**—The opening day of the fair, Tuesday October 12, has been designated as Educational Day. On this day all the white pupils and teachers will be admitted to the fair free of charge. It is also likely that a program of sports will be arranged for the school children on this day. Wednesday October 18, the second day of the fair, is Agricultural Day. A Farmers Congress is being planned for this day. Hon. Richard I. Manning, Governor of South Carolina and Commissioner E. J. Watson have already been secured as speakers for this occasion. Other speakers will be provided and plans are being made to have the largest gathering of farmers ever held in the county. Thursday October 19, is Merchants and Manufacturers Day. Friday, October 20,—the closing day of the fair, is Everybody's Day. It is impossible at this time to give the complete program of each day but there will be "something doing", every minute, day and night. The complete program of each day will be announced through the Chester newspapers.

BUY IT IN CHESTER

## Band Concerts DAILY

### FIREWORKS

An Added Attraction for  
Thursday Night, October 19.

## THE BATTLE OF THE DARDENELLES

One of the most beautiful and  
spectacular Fireworks  
ever witnessed.

No Extra Charge For This Attraction.

## Band Concerts DAILY

BUY IT IN CHESTER

### HORSE SHOW AND RACES.

The horse show will be held Wednesday, Thursday and Friday;—races will be held Wednesday and Thursday.

### THE EXHIBITS.

To house the exhibits of the Agriculture Department, the Live Stock, the Dairy and Poultry Supplies, the House-Held Fabric, the exhibits of the Canning, Home Demonstration and Bread Clubs, large tents have been secured. One of these tents covers almost one half a city block, being over three hundred feet long. As one object of the Fair is to show the products raised in Chester County it is hoped that the residents of the county will make sufficient entries in the various departments to fill the space.

### PREMIUM LISTS.

Your attention is called to the large premium list of each of the departments. This list is larger than any list that has yet been placed before the people of the county. We have endeavored to make the list of every department complete to suit the needs of the people of the county.

### ENTRIES.

Entries will be accepted at the office of the Chamber of Commerce beginning September 15 and continuing until the Saturday before the Fair. Commencing Saturday before the fair they will be accepted at the Secretary's office at the Fair ground until the close of the entries as specified in the Rules and Regulations and in the headnotes of the various departments.

It is not necessary to bring the article or animal with you in making your entries before the opening of the Fair. Making your entries early will help us in having the judges books ready for judging the exhibits. All persons making entries before the articles are brought in will be given an entry tag to attach to the article. All that is necessary then is to take your article to the Fair Ground before the time expires for the closing of entries of the department in which the article belongs.

### FOUR BIG DAYS

### EVERY DAY A FEATURE DAY

### TUESDAY OCTOBER 17.

### EDUCATIONAL DAY

All white school children and teachers of Chester County admitted FREE on this day. See announcement on page 7.

### WEDNESDAY OCTOBER 18.

### AGRICULTURAL DAY

### FARMER'S INSTITUTE.

Addresses By

### HON. RICHARD I. MANNING.

Governor of South Carolina.

### HON. E. J. WATSON

Commissioner of Agriculture of South Carolina

And Others

### THURSDAY OCTOBER 19

### MERCHANTS AND MANUFACTURERS DAY

### FRIDAY OCTOBER 20

### EVERYBODY'S DAY.

## OCTOBER, 17-18-19-20.

POSITIVELY NO CHANGE IN THESE DATES  
SOMETHING DOIN' EVERY MINUTE—"LETS GO"

## USE Peterson's Best The Quality Flour

Your worries are ended when you use PETERSON'S BEST FLOUR. You are always assured of rich, white flaky bread.

Our thirty years of milling experience is a guarantee of flour excellence. We buy our wheat direct from the farmer through our country elevators, and at all times get the best wheat that is moving.

When you order again do not forget Peterson's Best Flour, sold by

Sims and Carter  
Chester, S. C.  
Michigan Milling Company

## Special Invitation

You are Especially Invited  
To Visit

Our Stores during your stay in the city

We have the complete and up-to-date Stocks to show you of

Clothing and Furnishings. Ladies Ready-to-wear, Ladies', Children's and Men's Shoes.

Special prices in every department during Fair Week. Call and See Us.

The Big Store  
The S. M. Jones Company

## Lathan Grocery Company

Wholesale Grocers

Your orders appreciated  
and given prompt attention

Telephone 212

BUY IT IN CHESTER

## CHESTER COUNTY FAIR RULES AND REGULATIONS

### GENERAL

- 1—Competition is open as specified in the rules of each department.
- 2—The gates will be opened for admission of visitors at 3 a. m., closing at 6 p. m., open at 7 p. m. and closing at 11 p. m.
- 3—Employees of the fair must wear badges and day forces must be at their post at 8 o'clock a. m. each day of the fair and remain on duty until 6 p. m. and be at their post at 7 p. m. and remain until 11 p. m.; night force will be on duty 11 p. m. to 8 a. m.
- 4—Every reasonable effort will be made by the officers of the association and those in charge of the grounds to protect property on exhibition from loss or damage, but the association will not hold itself responsible should loss or damage occur.
- 5—Possession of fire arms or intoxicating liquors will subject person or persons having the same to arrest.
- 6—No peddling, hawking or selling of any kind, or distribution of advertising matter will be allowed except by license from the Secretary.
- 7—No article or animal will be entitled to space until the proper entry has been made. After an article or animal has been entered, it cannot be removed, temporarily or permanently, until the close of the Fair, except livestock, which can be removed after 12 o'clock M., October 20th.
- 8—Each department will be under the special charge and control of its Directors and Superintendents.
- 9—Premiums may be withheld for misrepresentation or failure to comply with rules.
- 10—Exhibitors must provide, at their own cost, all showcases, shelving, counters, fittings, etc., which they may require.
- 11—Exhibitors' business cards, pamphlets, circulars, samples, etc., may be placed and distributed from within the space allotted. Exhibitors may take orders during the Fair but no article on exhibition shall be delivered until after the close of the Fair.

### 12—ADMISSION

- NO COMPLIMENTARY PASSES.
- |  |             |
|--|-------------|
| Single Tickets 12 admissions   | .....\$1.75 |
| Each person in any vehicle   | ......25    |
| Children between 6 and 12 years  | .....15     |
| Badge for two-horse licensed hack admitting hack and driver at all times during the fair | .....\$2.00 |
| For one-horse hack   | .....1.75   |
| Auto Trucks  | .....2.50   |
| Drays  | .....1.00   |
| Public automobiles for week:   |             |
| Four or more passengers  | .....3.00   |
| Two passenger  | .....1.75   |
| Private automobiles, parking   | ......25    |
- 13—No money can be accepted by gate-keeper. Admission is only by ticket or official badge.
  - 14—For entry fees see departments.
  - 15—The entry books will open at the office of the Secretary of the Chamber of Commerce in the City of Chester from September 15th to and including last Friday before fair week, and at the Secretary's office at the fair grounds commencing Saturday before fair week and until 12 p. m. of Tuesday, October 17, 1916, except when otherwise specified in department headlines, when entries are closed.
  - 16—Entries may be made in person or by proxy. In making entries it is necessary to give the name of article, the name of postoffice address of the exhibitor, and the premium number under which the article entered is to compete.
  - 17—All articles which are the product of the soil must be entered in the name of the producer. Those showing handiwork or skill must be entered in the name of the one whose skill they exhibit; must have been made within two years. All other property must be entered in the name of the actual owner.
  - 18—The same article or animal cannot compete for the premium of two or more premium numbers except when otherwise stated in the head-notes of the department in which it is exhibited and shall not be awarded more than one premium under the same number.
  - 19—All entries will be numbered and recorded in the books of the proper department, and corresponding entry tags and property checks will be issued, the tags to be attached to the exhibit before installation.
  - 20—No person will be allowed to see the entries or have access to the entry books until after the awards have been made.
  - 21—With entries of registered cattle, sheep and swine complete bonafide information must be given. Penalty for false statement will be exclusion from competition or forfeiture of premium.
  - 22—Exhibitors must see to the proper delivery of articles and livestock on the grounds, and to the proper care of the latter. No charges for transportation or drayage will be paid by the Association.

### EXHIBITS AND PREMIUMS.

- 23—Exhibits not fully installed by time specified under the department rules will receive no attention from the judges; no obnoxious or repulsive objects will be admitted. Exhibitors will be required to keep the spaces and stalls clean.
- 24—The premiums are designated by ribbons—Blue meaning first; Red second and Yellow, third premium. These ribbons will be attached only by the director of each department after judges have made their awards and the same have been approved by the Superintendents. Premiums are paid only in accordance with the official award books, and are payable within thirty days after the close of the Fair.
- 25—The judges shall be furnished by the Secretary with a list of all entries in their respective departments and books in which their awards are to be recorded.
- 26—Should any of the judges previously selected fail to be present, the directors or Superintendent of each department are authorized to fill the vacancies.
- 27—No one directly or indirectly interested will be allowed to serve as judge, nor shall any official act as judge or umpire.
- 28—Judges are specially instructed not to award premiums to any animal or article because of its presence; it must be individually worthy.
- 29—When two subjects are deemed by the judges of equal merit, and then to either, or slope, the premium would be awarded, in such case the award must be to divide the first premium equally between the two competitors.
- 30—The Superintendent in charge, except in the Poultry Department, shall accompany the judges when making the examination in their respective departments and furnish them with all required information. Premiums will not be paid exhibitors when it is proved that they accompanied the judges when awarding the premiums. The awards, when completed, shall be signed by the judges and attested by the Superintendents, who will take charge of the book and return it to the Secretary. As the awards are made, the Director will attach ribbon indicating the award.
- 31—Decision of judges shall be final, and no appeal will be considered except in cases of protest in writing, with strong evidence of fraud or violation of the rules of the Association which must be filed with the Secretary before the premiums have been paid.
- 32—Directors and judges must not permit consolidation or

Continued on Page 3

## THE FLOUR

THAT MAKES THAT

BEAUTIFUL  
WHITE BREAD

IS THE KIND THAT HAS

D. A. STICKELL & SONS

Branded on the Sack

Be sure to specify STICKELL'S and  
GET IT

LEADING BRANDS

Queen of Maryland  
Magnolia

Stickell's Self Rising  
Elegant

LATHAN GROCERY COMPANY  
DISTRIBUTORS  
CHESTER, S. C.

Clark Furniture Company

OUR LINE OF FURNITURE

will suit you. We ask that you give us a call.  
"We Stand Back of What We Sell."

CERTIFIED MEMBER OF



THESE MARKS CERTIFY PURCHASE BY THE HOUSE STORES ASSOCIATION OF SAINT LOUIS-MEMBERS

We carry a full line of Cook Stoves and Ranges and make it to your interest to trade with us.

Everything For The Home

Clark Furniture Company

## Read My EXHIBITS

Stetson Hats, Griffon Clothes  
Nu-Style Clothes, Crossett Shoes  
Crawford Shoes for Men, American Girl's Shoes  
J. & K. Shoes for Ladies, Onyx Hosiery  
Bates Street and Manchester Shirts  
Horn's Neckwear, Triangle Collars  
and many other brands you like.

I HAVE ABSOLUTELY THE BEST  
LINE OF WORK SHOES IN THE CITY

Styles that are good  
Service that is better  
Prices that are the best

ON EXHIBITION AT

SCHLOSBERG'S  
IN THE VALLEY

GIVE ME A LOOK

BUY IT IN CHESTER

Continued from Page 2

change of exhibits after entries have been made.
33—Directors and judges are not authorized to agree to compromise in case of protest by an exhibitor.

CONCESSIONS.

34—One ticket good for one admission each day of the Fair will be given for every ten dollars of concession money paid, and for each additional charge of ten dollars or fraction, not less than five dollars, one extra ticket, and no more.

35—Whips, Slappers and other objectionable articles are prohibited.

36—Any concessionaire directing on any indecent or immoral act, or instituting any form of gambling, at any time during the Fair, will forfeit his license and be promptly expelled the grounds.

37—No superintendent may employ help without written authority of the management. Supplies may be obtained only on order from the Secretary.

38—Employees of departments will be at their posts on the grounds at such hours daily during the fair as may be designated by the Superintendent of the department.

39—They will report erroneous entries to the Secretary's office.

40—Superintendents will point out to the judges the articles or animals to be inspected and cause the same to be displayed in their proper places.

41—They will see that no property is removed before the close of the Fair, except by written permission by the Secretary, and that property checks are detached from entry tags when property is installed.

42—The Association may use either the single or three-judge system, or both.

43—Superintendents shall have complete charge of their respective departments.

NUMBER OF ENTRIES.

Unless three or more entries are made in each class of each department (unless otherwise indicated in department headnotes and rules) first prize will be awarded and second money paid. Where second money is not designated on department premium list, second money shall be one-half of first money.

DEPARTMENT A. AGRICULTURE.

C. C. McALLILEY, H. W. MILLER, J. FRAZIER HARDIN, D. S. HOLLIS, H. O. TENANT, DIRECTORS. J. A. RILEY, SUPERINTENDENT. H. W. MILLER, ASST. SUPT.

NO ENTRY FEE.

All entries must be made and exhibits in place by 12 o'clock noon, Tuesday, October 17, 1916. No exhibits will be taken into the grounds after that time.

All exhibits entered for competition must be grown or produced by the person competing or under his or her direction in Chester County during the year 1916.

A 1—CORN CONTEST

FOR MEN

Best exhibit, any variety, to consist of ten ears, accompanied by three stalks, with ears attached, of the same variety.

First Premium \$3.00
Second Premium 2.00
Third Premium 1.00

FOR BOYS

Best exhibit, any variety, to consist of ten ears, accompanied by three stalks, with ears attached, of the same variety.

First Premium \$3.00
Second Premium 2.00
Third Premium 1.00

EAR CONTEST

Best ten ears (unshucked) of Marboro corn 1.00
Best ten ears (unshucked) of Batts corn 1.00
Best ten ears (unshucked) of Belmont or Gid Morris corn 1.00
Best ten ears (unshucked) of Garrie corn 1.00
Best ten ears (unshucked) of any other white corn 1.00
Best ten ears (unshucked) of any yellow corn 1.00
Best ten ears (unshucked) of any red corn 1.00
Best single ear of one-earred corn .50
Best single ear of prolific corn .50
Best single ear of any variety, emphasis being placed on shape and size of ear and kernels 1.00

A 2—WHEAT CONTEST

Bushel and sheaf of Falcaster Wheat, sheaf to measure fifteen inches around \$0.50 \$0.25
Bushel and sheaf of Golden Chaff Wheat, sheaf to measure fifteen inches around .50 .25
Bushel and sheaf of Leap's Prolific Wheat, sheaf to measure fifteen inches around .50 .25
Bushel and sheaf of Purple Straw Wheat, sheaf to measure fifteen inches around .50 .25
Bushel and sheaf of any variety of bearded wheat sheaf to measure fifteen inches around .50
Bushel and sheaf of any variety of beardless wheat, sheaf to measure fifteen inches around .50
Bushel wheat (smooth) 1.50 .75
Bushel wheat (bearded) 1.50 .75

A 3—OAT CONTEST

Best peck and sheaf of Fulgum Oats \$ .50 .25
Best peck and sheaf of Applier Oats, sheaf to measure fifteen inches around .50 .25
Best peck and sheaf of fall-sown Rust proof Oats, sheaf to measure fifteen inches around .50 .25
Best peck and sheaf of spring sown Red Rust proof Oats, sheaf to measure fifteen inches around .50 .25
Best peck and sheaf of other variety, sheaf to measure fifteen inches around .50 .25

A 4—IRISH POTATOES

Best half bushel Lookout Mountain Irish Potatoes 2.50
Best half bushel any other variety Irish Potatoes 2.50
Premiums for Irish Potatoes will be awarded according to the following score card:

Uniformity 40 points
Smoothness 20 points
Shaleness of eye 10 points
Freedom from blemishes 20 points
Size (marketable size) 10 points
Total 100 points

A 5—SWEET POTATOES

Best half bushel Nancy Hall Sweet Potatoes 2.50
Best half bushel any other variety Sweet Potatoes will be awarded according to the following score card:

Uniformity 40 points
Smoothness 20 points
Transparency by type 20 points
Freedom from blemishes 10 points
Size (marketable size) 10 points
Total 100 points

A 6—HAY

It is not less than 50 pounds in weight.

30—Best bale of Cowpea Hay \$2.00 \$1.00
31—Best bale of Red Clover 2.00 1.00
32—Best bale of Soybean Hay 2.00 1.00
33—Best bale of Alfalfa Hay 2.00 1.00
34—Best bale of Orchard Grass Hay 2.00 1.00
35—Best bale of Mixed Oat and Hairy Vetch Hay 2.00 1.00
36—Best bale of Timothy Hay 2.00 1.00
37—Best bale of Crab Grass Hay 2.00 1.00
38—Best bale of Mixed Hay 2.00 1.00
39—Best bale of other Grasses 2.00 1.00
40—Best bale of Shredded Corn Stover 2.00 1.00

SCORE CARD FOR JUDGING HAY.

MATURITY—Cut at proper stage of maturity 25 points
CONDITION—In good merchantable order, freedom from dust, mold, excessive moisture or damage 25 points
COLOR—Bright or natural color, freedom from sunburn or moisture stains 20 points
AROMA—Characteristic of the hay named, sweet and free from mustiness 20 points
TEXTURE—Not too coarse 10 points

Hay entered for these premiums must be neatly baled, cut at the proper stage to make good hay, well cured, free from mold or mustiness, and containing not exceeding 10 per cent of other grasses or hay than the one under which it is entered, except in "Mixed Grasses." Failure to observe these rules will debit it from a premium.

COWPEA CONTEST.

41—Best peck of Black Cowpeas .50
42—Best peck of Iron Cowpeas .50
43—Best peck of Brabham Cowpeas .50
44—Best peck of California Blackeye Cowpeas .50
45—Best peck any other table peas .50
46—Best peck of any other variety .50
47—Best collection of varieties of peas (not less than 3 varieties) 1.00

SEED CONTEST.

48—Best half bushel Red Clover Seed .50
49—Best half bushel White Clover Seed .50
50—Best half bushel Vetch Seed .50
51—The largest and best displayed variety of garden and field seed grown by any S. C. firm or individual, Diploma
52—Best half bushel Oat Seed .50
53—Best half bushel Abruzzi Rye .50
54—Best half bushel any other variety Rye .50
55—Best half bushel Crimson Clover Seed .50

A 7—MISCELLANEOUS.

56—Best dozen ears popcorn \$0.50 \$0.25
57—Best half bushel soy Beans 1.00 .50
58—Best peck turnip 1.00 .50
59—Best peck table beets 1.00 .50
60—Best peck onions 1.00 .50
61—Best dozen bunches grapes 1.00 .50
62—Best peck apples (Home Grown) 1.00 .50
63—Largest Spanish (Any Variety) 1.00 .50
64—Best peck peaches (Home Grown) 1.00 .50
65—Best peck pears (Home Grown) 1.00 .50
66—Best three heads cabbage 1.00 .50
67—Best dozen tomatoes 1.00 .50
68—Largest Pumpkin 1.00 .50
69—Best dozen stalks sorghum 1.00 .50
70—Best peck paring garden peas .50
71—Best peck Spanish peanuts .50 .25
72—Best half bushel Millet 1.00
73—Best display of stock peas, two or more varieties 1.00 .50
74—Best Watermelon 1.00 .50
75—Best gallon Garden Pea Beans 1.00 .50
76—Best stalk Red Pepper 1.50 .75
77—Best half-bushel Whippoorwill Peas 1.00 .50
78—Best gallon Molasses 1.00 .50
79—Best stalk long staple Cotton 1.00 .50
80—Best stalk short staple cotton 1.00 .50
81—Best bale long staple Cotton 5.00 2.00
82—Best bale short staple Cotton 2.50 1.00
83—Bundle Velvet beans, any variety (10 lbs.) .50
84—Bundle Soy beans, any variety (10 lbs.) 1.50
85—Best display of vegetables, five or more varieties 1.50

DEPARTMENT B. Cattle

R. E. SHANNON, J. WATT WEIR, T. H. WHITE, JR., DIRECTORS. E. W. GIBSON, SUPT. T. M. DARBY, ASST. SUPT.

RULES.

1—All entries must be made and all exhibits in place before 11 o'clock a. m. Tuesday, October 18, 1916, and must remain on the grounds until 5 o'clock p. m. Friday October 20, 1916.

2—Bedding and feed must be provided for each animal by the exhibitor.

3—Unless three or more entries are made in each class, first prize will be awarded and second money paid.

4—The same animal may be entered in several different classes and the entrance fee in all subsequent classes will be but fifty per cent of the first entrance fee, PROVIDED the animal is entered in the class taking the highest fee first. All entries for more than one class must be made at the same time. No entries for additional classes will be accepted after the first entry has been made.

5—All exhibits will be placed at the direction of the Superintendents.

—Entries must be owned by residents of Chester County, owned by residents of Chester County.

JERSEY—REGISTERED.

86—Best Calf, either sex under 1 year, entry 50c \$3.00 2.00
87—Best Bull 1 to 2 years, entry \$1.00 5.00 2.50
88—Best Bull, 2 years and over, entry \$1.00 5.00 2.50
89—Best Cow, 1 to 2 years, entry \$1.00 5.00 2.50
90—Best Cow, 2 years and over, entry \$1.00 5.00 2.50
91—Best Heifer, over 1 year and under 2, entry \$1.00 5.00 2.50
92—Best herd, bull and four or more females on try for herd, \$2.00 10.00

HOLSTEIN—REGISTERED.

93—Best Calf, either sex, under 1 year, entry 50c \$3.00 \$2.00
94—Best Bull, 1 to 2 years, entry \$1.00 5.00 2.50
95—Best Bull, 2 years and over, entry \$1.00 5.00 2.50
96—Best Cow, 1 to 2 years, entry \$1.00 5.00 2.50
97—Best Cow, 2 years and over, entry \$1.00 5.00 2.50
98—Best Heifer, over 1 year and under 2 years, entry \$1.00 5.00 2.50
99—Best herd, bull and four or more females, entry for herd \$2.00 10.00

ABERDEEN ANGLIC—REGISTERED.

100—Best Bull, 3 years and over, entry \$1.00 \$2.50
101—Best Bull, 1 to 3 years, entry \$1.00 5.00 2.50
102—Best Calf, either sex, to 1 year, entry 50c 3.00 2.00
103—Best Cow, 3 years and over, entry \$1.00 5.00 2.50
104—Best Cow, one to 3 years, entry \$1.00 5.00 2.50
105—Best herd, bull and four or more females, entry herd \$2.00 10.00

Continued on Page 5

ONE MINUTE TOO LATE

MAY MEAN YOUR HOME IN ASHES AND NO FUNDS TO REBUILD

It may mean the accident that puts an end to your earning ability for weeks. It may mean the grim hand of death that forever stops your ability to supply your loved dependent ones with even life's necessities.

Our Motto Is: Prompt Service, Reasonable Rates, Absolute Protection If interested in any of the following, we shall be pleased to serve you:

- FIRE INSURANCE. ACCIDENT AND HEALTH INSURANCE. LIFE INSURANCE. STEAM BOILER INSURANCE. PLATE GLASS INSURANCE. EMPLOYER'S LIABILITY AND BURGLARY INSURANCE USE AND OCCUPANCY INSURANCE.

Don't Ask Your Friend to Guarantee You

When Administrators, Trustees, Public Officials Contract and other Bonds cost so little.

C. C. & C. R. EDWARDS

Phone Office No. 89 Phone Residence No. 88

DEPOSIT YOUR MONEY WITH THE

National Exchange Bank

CAPITAL - \$100,000

SURPLUS AND UNDIVIDED

PROFITS - \$55,000

We always strive to take care of all our customers, large and small. We solicit your account. Start one today. The man who saves now is the man who has money to spend later in life. Come in and make our place your headquarters while attending the fair.

J. L. Glenn, Pres. S. M. Jones, V. P. J. R. Dye, Cashier. Wm. McKinnell, Asst. Cash. A. T. Henry, Col. Clerk. S. Fred Murphy Bookkeeper.

LUCILE SHEPHERD CHECKS

LYNNWOOD GINGHAMS

TROSSACHS STAPLE GINGHAMS

MANUFACTURED

BY

THE SPRINGSTEIN MILL

Chester, S. C.

SOLD BY

THE S. M. JONES CO. JOS. WYLIE CO. RODMAN-BROWN CO. A. W. KLUTTZ & SONS J. T. COLLINS.

SEE OUR DISPLAY IN THE MANUFACTURERS' EXHIBIT, BOOTH No. 1.

**THE CHESTER FAIR BOOSTER**

Published in the Interests of the Chester County Fair by the  
**CHESTER CHAMBER OF COMMERCE**

September 1916.

**TO THE PUBLIC**

That no misunderstanding may arise as to the real work of the Chester Chamber of Commerce, we take this opportunity of advising the residents of Chester County that while this organization is supported to a great extent by the business men of the City of Chester, yet at the same time it is at the service of every resident of the county, at all times for the solution of all questions and matters wholly of a public nature. Of course we cannot afford to take part in those matters of a political or personal nature but we stand ready to aid and assist the people of Chester county in every other matter particularly in good roads and in diversifying the agriculture of the county.

One of the most important bureaus of the Chester of Commerce is the Agriculture Bureau which is intended to take charge of and to assist with all matters pertaining to the rural advancement of the County. This bureau can be of much service to you and in many ways help bring about conditions that would otherwise fail.

On the other hand there are many matters that will be inaugurated by this bureau in which the bureau will need the assistance and support of the neighbors of the city and with the cooperation of the residents of the county and the Chester Chamber of Commerce many things can be accomplished for Chester County that would otherwise fail for lack of attention.

A very cordial invitation is extended to you to visit the offices of the Chamber of Commerce and talk over any matters pertaining to the welfare of the county, or offer any suggestions for the betterment of the present conditions of the county, and your co-operation with this organization will be appreciated.

R. B. Caldwell,

President.  
Alfred O. Lloyd,  
Executive Secretary.

THE

STIREWALT

FAMILY.

5

PEOPLE

5

TWO BIG

ACTS

TWICE DAILY

EACH DAY OF

THE

CHESTER

COUNTY

FAIR.

OCT. 17-18-19-20.

**ENTRY BLANK**

FOR ALL DEPARTMENTS EXCEPT POULTRY

It is not too early to make your entries **NOW**, and by making the entries early you will help facilitate the work at the Fair Grounds on the opening day of the fair. To make the entries you do not bring the article you wish to enter to Chester until the opening day, you simply fill your entry blank and in return receive an entry tag to attach to the article entered. Then you bring in the entries on the **FIRST DAY** of the fair, and all that is necessary is that you leave them at the different departments in which each is entered. If you need assistance in selecting your exhibits or advice in filling out entry blank just write or call at the office of the Secretary.

**Sixth Annual Chester County Fair**

UNDER THE MANAGEMENT OF THE CHESTER CHAMBER OF COMMERCE

CHESTER, S. C. OCTOBER 17-18-19-20, 1916

ALFRED O. LOYD, Secretary.

Please accept the following entries subject to regulations governing same, as published in the Chester County Fair Premium List for 1916.

Date \_\_\_\_\_ 1916

Signature \_\_\_\_\_

Post Office Address \_\_\_\_\_

The Required FEE must accompany all entries of poultry and live stock.

No. in Premium List	DESCRIPTION OF EXHIBITS Use exact language of Premium List where premiums are offered	ENTRY FEE

MAKE YOUR ENTRIES EARLY.

It will save confusion at the opening day of the fair. Go over the list of the different departments **NOW**, check off the articles **YOU** and **YOUR FAMILY** expect to enter, fill out the entry blank and sent it in. **DO IT TODAY.**

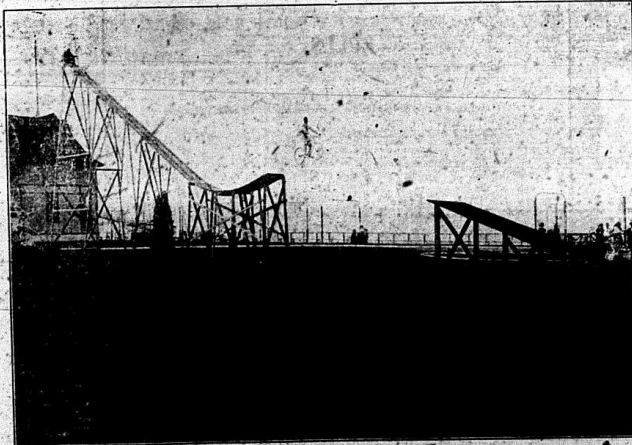
**SENSATIONAL SMITHSON**

**IN A TWIRL OF TERROR**

**CYCLING THE CHASM**

Twice Daily

the most sensational and spectacular act ever seen



Twice Daily

with hazardous and beautiful Fire Display at night

Don't Fail to See This "Thriller" at the  
**Chester County Fair, Oct. 17, 18, 19, 20**

**\$7.00 RING FREE**

See Our Window

—FAIR WEEK—

Full line of well selected gifts always to be shown  
Write for 1916 catalogue.

**H. K. HOUGH**

JEWELER

**WELCOME VISITORS**

Make Our Store headquarters while you are here, leave your packages and wait for your friends.

**WE SELL:**

Ladies' high grade suits, coats, dresses and skirts.

W. L. Douglas shoes for men.

A good line of work shoes.

"Buster Brown" shoes for children.

Ladies' Muslin Underwear.

Ladies' Silk and lingerie shirt waists.

A full line of high class dependable merchandise of all kinds.

You are cordially invited to come in and see us...

**E. E. CLOUD.**

**When You Are In Town**

Attending the County Fair, or at any other time, you are cordially invited to call at our place of business and see for yourself just how well we are equipped to handle your bank business; and, if you are not already a customer of ours, we want you to become one without further delay.

We Are The Leaders.

**THE COMMERCIAL BANK**

CHESTER, S. C.

Capital \$100,000. Surplus \$55,000.

A. G. BRICE, Pres. R. B. CALDWELL, Vice-Pres.

ROBT. GAGE, Cashier.

Established in 1889.

**SHORTHORN—REGISTERED.**

106.—Best Bull, 3 years and over, entry \$1.00	\$5.00	\$2.50
107.—Best Bull, 1 to 3 years, entry \$1.00	5.00	2.50
108.—Best Calf, either sex, to 1 year, entry 50c	3.00	2.00
109.—Best Cow, 3 years and over, entry \$1.00	5.00	2.50
110.—Best Cow, 1 to 3 years, entry \$1.00	5.00	2.50
111.—Best herd, bull and four or more females, entry herd \$2.00	10.00	

**HEREFORDS—REGISTERED.**

112.—Best Bull, 3 years and over, entry \$1.00	\$5.00	\$2.50
113.—Best Bull, 1 to 3 years, entry \$1.00	5.00	2.50
114.—Best Calf, either sex, to 1 year, entry 50c	3.00	2.00
115.—Best Cow, 3 years and over, entry \$1.00	5.00	2.50
116.—Best Cow, 1 to 3 years, entry \$1.00	5.00	2.50
117.—Best herd, bull and four or more females, entry \$2.00	10.00	
118.—Best Bull, 3 years and over, entry \$1.00	\$5.00	\$2.50

**RED POLE—REGISTERED**

119.—Best Bull, 1 to 3 years, entry \$1.00	5.00	2.50
120.—Best Calf, either sex, to 1 year, entry 50c	3.00	2.00
121.—Best Cow, 3 years and over, entry \$1.00	5.00	2.50
122.—Best Cow, 1 to 3 years, entry \$1.00	5.00	2.50
123.—Best herd, bull and four or more females, entry herd \$2.00	10.00	

**DEVONS—REGISTERED**

124.—Best Calf, either sex under 1 year, entry 50c	\$3.00	\$2.00
125.—Best Bull 1 to 3 years, entry \$1.00	5.00	2.50
126.—Best Cow one to two years, entry \$1.00	5.00	2.50
127.—Best Cow two years and over entry \$1.00	5.00	2.50
128.—Best Heifer, over 1 year and under 2, entry \$1.00	5.00	2.50
129.—Best herd, bull and four or more females, entry for herd \$2.00	10.00	

**GRADES.**

130.—Best Bull, 3 years and over, entry 50c	\$2.50	\$1.00
131.—Best Bull, 1 to 3 years, entry 50c	2.50	1.00
132.—Best Calf, either sex, to 1 year, entry 25c	1.25	.50
133.—Best Cow, 3 years and over, entry 50c	2.50	1.00
134.—Best Cow, 1 to 3 years, entry 50c	2.50	1.00
135.—Best herd, bull and four or more females, entry, herd \$1.00	5.00	

**DEPARTMENT C.**

**SWINE**

R. E. SHANNON, T. H. WHITE, DIRECTORS. J. WATT WEIR, J. M. DARBY, ASST. SUPT.

E. W. GIBSON, SUPT. Same rules apply in this department as in Department B.

**BERKSHIRE—REGISTERED.**

136.—Best Boar, 2 years and over, entry \$1.00	\$5.00	\$2.50
137.—Best Boar, 1 year and under 2 years, entry \$1.00	5.00	2.50
138.—Best Sow, under 1 year, entry 50c	2.00	1.00
139.—Best Sow Pig, over 1 year old, entry 50c	3.00	2.00
140.—Best Sow Pig, under 1 year old, entry 50c	2.00	1.00
141.—Best herd, 1 boar and 2 or more sows, entry for herd \$1.00	5.00	
142.—Best Sow, with 5 or more pigs, entry 50c	3.00	

**DURCO—REGISTERED.**

143.—Best Boar, 2 years and over, entry \$1.00	\$5.00	\$2.50
144.—Best Boar, 1 year and under 2 years, entry \$1.00	5.00	2.50
145.—Best Boar, under 1 year, entry 50c	2.00	1.00
146.—Best Sow Pig over 1 year old, entry 50c	3.00	2.00
147.—Best Sow Pig under 1 year, entry 50c	2.00	1.00
148.—Best herd, 1 boar and 2 or more sows, entry for herd \$1.00	5.00	
149.—Best Sow with 5 or more pigs, entry 50c	3.00	

**POLAND CHINA—REGISTERED.**

150.—Best Boar, 2 years and over, entry \$1.00	\$5.00	\$2.50
151.—Best Boar, 1 year and under 2 years, entry \$1.00	5.00	2.50
152.—Best Boar, under 1 year, entry 50c	2.00	1.00
153.—Best Sow Pig, over 1 year old, entry 50c	3.00	2.00
154.—Best Sow Pig, under 1 year, entry 50c	2.00	1.00
155.—Best herd, 1 boar and 2 or more sows, entry for herd \$1.00	5.00	

**CHESTER WHITE—REGISTERED**

156.—Best Sow, with 5 or more pigs, entry 50c	3.00	
157.—Best Boar, 2 years and over, entry \$1.00	\$5.00	\$2.50
158.—Best Boar, 1 year and under 2 years, entry \$1.00	5.00	2.50
159.—Best Boar, under 1 year, entry 50c	2.00	1.00
160.—Best Sow Pig, over 1 year old, entry 50c	3.00	2.00
161.—Best Sow Pig, under 1 year old, entry 50c	2.00	1.00
162.—Best herd, 1 boar and 2 or more sows, entry for herd \$1.00	5.00	
163.—Best Sow, with 5 or more pigs, entry 50c	3.00	

**HAMPSHIRE—REGISTERED.**

164.—Best Boar, 2 years and over, entry \$1.00	\$5.00	\$2.50
165.—Best Boar, 1 year and under 2 years, entry \$1.00	5.00	2.50
166.—Best Boar, under 1 year, entry 50c	2.00	1.00
167.—Best Sow Pig, over 1 year old, entry 50c	3.00	2.00
168.—Best Sow Pig, under 1 year, entry 50c	2.00	1.00
169.—Best herd, 1 boar and 2 or more sows, entry for herd \$1.00	5.00	
170.—Best Sow, with 5 or more pigs, entry 50c	3.00	

**ESSEX—REGISTERED.**

171.—Best Boar, 2 years and over, entry \$1.00	5.00	2.50
172.—Best Boar, 1 year and under 2 years, entry \$1.00	5.00	2.50
173.—Best Boar, under 1 year, entry 50c	2.00	1.00
174.—Best Sow Pig, over 1 year old, entry 50c	3.00	2.00
175.—Best Sow Pig, under 1 year old, entry 50c	2.00	1.00
176.—Best herd, 1 boar and 2 or more sows, entry for herd, \$1.00	5.00	
177.—Best Sow with 5 or more pigs, entry 50c	3.00	

**DEPARTMENT D SHEEP.**

178.—Best Flock, one ram and three ewe, entry 50 cents flock	\$5.00	\$2.50
--	--------	--------

**LADIES**

You are cordially invited to make Ehrlich's 5-10-25-50 and \$100 Store your headquarters during FAIR week or any other time you are in town.

EHRlich's 5-10-25-50 AND \$100 STORE.

**FAIR VISITORS**

Are cordially invited to call and inspect our Fall Millinery.

MISS LETTIE BARBER

Next door to National Exchange Bank.

**MOFFATT GROCERY COMPANY**

**WHOLESALE GROCERS**

CHESTER, SOUTH CAROLINA

**Chester Ice & Fuel Co.**

Wholesalers and Retailers of the following grades of Coal

Mountain Ash Jellico Block Coal.  
Pennsylvania Anthracite, Egg, Stove & Chestnut Pocahontas Steam, Egg and Lump.

Where Quality, Weight and service is considered we are sure that a trial order will convince you that we can please you in same.

**CHESTER ICE & FUEL CO.**

Manufacturers of pure Distilled Water Ice.

Phone No. 35. Chester, S. C. ICE COAL

**THE PEOPLES NATIONAL BANK**

of Chester, S. C.

Capital \$50,000.00 Surplus \$27,500.00

WE ARE A MEMBER OF THE FEDERAL RESERVE BANK OF RICHMOND VA., and are in position to lend you money at all times at reasonable rates of interest. Your business solicited.

**JOS. WYLIE & CO.**

COME TO THE FAIR

And we extend you a cordial invitation to make our store your headquarters—

We have a large rest room for Ladies and children where every one is welcome whether you are our customer or not—come and make yourself at home—

JOS. WYLIE & CO.

CHESTER'S OLDEST AND LARGEST STORE.

# Sims & Carter

## WHOLESALE GROCERS

Flour, Meal, Meats, Lard and Grain.  
Our prices are always lowest.

## Real Estate

List your property with us. We sell it. If you want to buy, see us. We have it.

# Sims & Carter

# Hardware

THE MOST COMPLETE STOCK IN THE STATE

We Make a Specialty of

## FENCING

We carry several Car Loads all the time

In Elmwood, American and Pittsburg

Chester Hardware Co.

## The Rodman-Brown Co.

Offers the public in Chester, Chester county and surrounding counties the Best Merchandise that money can buy, at prices as low as is consistent with quality which we always keep up. Three stores equipped at all times with seasonable goods, the quality and prices of which, combined, make your purchase easy.

"The Home of Gilt Edge Flour"

The RODMAN-BROWN COMPANY

## DEPARTMENT F. HORSES

Entry Fee Each Department 50c.

D. GOBER ANDERSON, SUPT. J. N. WHITESIDE, ASST. SUPT.

### WEDNESDAY, OCTOBER 18TH.

179—Brood mare, with colt at side	5.00	2.50
180—Single harness horse or mare, S. C. raised	5.00	2.50
181—Saddle pony, under 14 hands, ridden by boy or girl	5.00	2.50
182—Colt, under 1 year old, S. C. raised	5.00	2.50
183—Saddle horse or mare, S. C. raised	5.00	2.50
184—Single harness horse, open to the world	5.00	2.50
185—Colt, 2 years old, S. C. raised	5.00	2.50
186—Combination horse or mare, open to the world	5.00	2.50
187—Single harness colt, under 4 years old, S. C. raised	5.00	2.50

### THURSDAY, OCTOBER 19TH.

188—Colt 1 year old, S. C. raised	5.00	2.50
189—Single harness mare, open to the world	5.00	2.50
190—Single harness pony, under 14 hands, driven by boy or girl	5.00	2.50
191—Colt, 3 years old, S. C. raised	5.00	2.50
192—Pair harness horses, mares or one each sex, open to the world	5.00	2.50
193—Saddle horse or mare, open to the world	5.00	2.50
194—Single harness horse or mare, to be driven by lady	5.00	2.50

### FRIDAY, OCTOBER 20TH.

195—Mule colt, under 1 year old, S. C. raised	5.00	\$2.50
196—Single harness mule	5.00	2.50
197—Mule colt, 1 year old, S. C. raised	5.00	2.50
198—Mule colt, 2 years old, S. C. raised	5.00	2.50
199—Pair harness mules	5.00	2.50
200—Mule, shown under halter	5.00	2.50

Note—the right is reserved to postpone or cancel rings on account of not filling satisfactorily, bad weather or unavoidable causes. There must be five or more entries in each class. Entrance fee will be returned in case a ring is cancelled.

## DEPARTMENT G. RACES

J. E. CORNWELL, SUPT. J. B. WESTBROOK, ASST. SUPT.

### RULES GOVERNING ALL RACES.

National Trotting Association Rules to govern all races. All purses divided as follows:—50, 30 and 20 per cent to winner.

Five to enter, four to start.

Entry fee \$5.00 and five per cent of winnings.

The right is reserved to change program; declare off races on account of not filling satisfactorily and bad weather, or any unavoidable causes.

All entries closed 6 P. M. October 17th, 1916.

Address all communications to J. E. Cornwell, Supt. Chester, S. C.

### WEDNESDAY, OCTOBER 18TH.

Trot or pace, 2:20, one mile \$100.00

### THURSDAY, OCTOBER 19TH.

Trot or pace owned in Chester County not less than thirty days \$100.00

## DEPARTMENT H. HOUSEHOLD FABRICS

NO ENTRY FEE.

MISS KATHLEEN WILSON, MRS WALTER SIMPSON, MRS. R. L. CUNNINGHAM, MRS. A. G. THORNTON, MISS JANIE ATKINSON, DIRECTORSESSES.

All articles must be properly labeled. Unless three or more entries are made in each class, first prize will be awarded and second money paid, except in case where only first money is specified—in this case one-half first money will be paid. Ribbons will be awarded for first and second premiums in addition to cash premium. All articles must be placed on exhibit before 12 o'clock, noon, Tuesday, October 18, 1916.

NO.	ARTICLE	First	Second
201.—Best Counterpane	50	25	
202.—Best Calico Quilt	50	25	
203.—Best Patch Work Quilt	50	25	
204.—Best Patch Work Quilt, worsted	50	25	
205.—Silk Quilt, any style	50	25	
206.—Hand-made Rug	50	25	
209.—Best Fine Shirt Waist, hand-made	50	25	
208.—Best Dress made by exhibitor	50	25	
214.—Best Fine Shirt Waist, hand-made	50	25	
210.—Best Child's Dress, hand-made	50	25	
211.—Best Infant's Dress, hand-made	50	25	
212.—Best Infant's Socks	50	25	
213.—Best Infant's Carriage Robe	50	25	
214.—Best Specimen Lace, hand-made	50	25	
215.—Best Specimen Tatting	50	25	
216.—Best Tidy, fancy	50	25	
217.—Best Darning Specimen	50	25	
218.—Best Mending Specimen	50	25	
219.—Best Specimen Plain Sewing	50	25	
220.—Best Embroidered Pillow Cases	50	25	
221.—Best School Bag	50	25	
222.—Best Sofa Pillow	50	25	
223.—Best Set Table Dollies	50	25	
224.—Best Indian Bead Work	50	25	
225.—Best Piano Cover	50	25	
226.—Best Pair Towels	50	25	
227.—Best Ladies Slippers, crocheted	50	25	
228.—Best Ladies Shawl, crocheted	50	25	
229.—Best Tray Cover	50	25	
230.—Best Center Piece	50	25	
231.—Best Ladies Handkerchief	50	25	
232.—Best Carving Cloth	50	25	
233.—Best Tea or Lunch Cloth	50	25	
234.—Best Collar, hand-made	50	25	
235.—Best Pin Cushion, embroidered	50	25	
236.—Best Corset Cover	50	25	
237.—Best Child's Cap, crocheted	50	25	
238.—Best Table Runner, embroidered	50	25	
239.—Best Kimono	50	25	
240.—Best Collection of Growing Plants	1.00	.50	
241.—Best Collection of Flowers	1.00	.50	
242.—Best Crayon Drawing	50	25	
243.—Best Oil Painting	50	25	
244.—Best Water Color Painting	50	25	
245.—Painting on China, single article	50	25	
SPECIAL PREMIUMS FOR LADIES OVER 40.			
246.—Best Hand-made Blanket	\$1.00		
247.—Best Pair Sox, home knit	50	25	
248.—Best Pair Ladies Stockings, knit	50	25	
249.—Best Specimen of Tatting	50	25	
250.—Best Specimen of Knitting	50	25	

Continued on Page 7

## The Chester Machine and Lumber Co.

"The Yard Of Quality"

WHOLESALE AND RETAIL  
LUMBER LATHS SHINGLES  
General Building Material

Auto and Machinery Repairing  
Chester, S. C.

## Leckie & Cox

Ladies and Gents  
Furnishings and Shoes

Chester's Young and  
Progressive Merchants

HIGH GRADE MERCHANDISE  
AT THE RIGHT PRICES

NEXT DOOR TO  
Hamilton's Book Store

## We Know

That everyone will enjoy themselves during the Fair.

After the Fair, make life an enjoyment by installing electrically operated devices in your residence. What is more healthful and gives more enjoyment than a cozy, brightly lighted home?

## BUCKEYE MAZDA LAMPS

Give three times the light for the same cost as carbon lamps. They are cheaper this year than ever before. Why not install them and enjoy the winter?

Southern Public Utilities Co.  
134 Gadsden Street

# THE CHESTER DRUG COMPANY

The Leading Druggists

Headquarters for Farm, Field and Garden Seed, Clover, Rape, Vetch and Alfalfa. All other varieties carried in season.

Let Us Supply your Seed and Drug Wants

THE CHESTER DRUG CO.



Roll Door Hoosier Washer

## HOOSIER KITCHEN CABINETS

save hundreds of steps and lots of worry. Your home furnished from Kitchen to Parlor at prices that will interest you.

Funeral Directors and Licensed Embalmers

## Lowrance Brothers

Phones 282, 136 and 356.

153 Gadsden Street Chester, S. C.

Telephone No. 134

## Coca Cola Bottling Company

Chester, S. C.

Drink



In Bottles

Have a Case in Your home, Your Grocer Will Supply you.

Deep Rock Ginger Ale

Chester Coca Cola Bottling Company

Continued from Page 6

251.—Best Specimen of Embroidery	50
252.—Best Specimen of Drawn Work	50
BY GIRLS 16 YEARS AND UNDER.	
253.—Best Hand-made Shirt Waist	50
254.—Best Hand-Made Dress	50
255.—Best Dressed Doll	50
256.—Best and largest display by one child	50
257.—Best Center Piece	50
258.—Best Ladies' Handkerchief	50
259.—Best Child's Dress	50
260.—Best Collar	50
261.—Best Pin Cushion	50

## DEPARTMENT I. PANTRY AND DAIRY SUPPLIES

NO ENTRY FEE.

All exhibits must be in the hall before 12 o'clock, noon Tuesday, October 18, 1916.

ALL CANNED GOODS MUST BE PROPERLY LABELED. MRS. FRASIER, HARDEN, MISS LOIS, HARDEN, MISS GERTRUDE MCKEOWN, MRS. R. W. ABELL, MISS KATE SIMPSON, DIRECTORESSES.

In addition to the cash prizes, Ribbons will be awarded for First and Second Prizes.

Unless three or more entries are made first prize will be awarded and second money paid in that class.

ARTICLE		First	Second
262.—Best Loaf of Bread	.....	\$1.00	\$.50
263.—Best Rolls	.....	1.00	.50
264.—Best Corn Muffins	.....	1.00	.50
265.—Best Biscuit	.....	1.00	.50
266.—Best Cake, any kind, cied	.....	1.00	.50
267.—Cake, any kind, uniced	.....	1.00	.50
268.—Pickles, four or more varieties	.....	.50	.25
269.—Display Canned Fruits, in glass	.....	1.00	.50
270.—Best and largest display of Preserves, Jams, Jellies, Sauces, Pickles and Catsups	.....	1.00	.50
271.—Best Dried Beef	.....	1.00	.50
272.—Best Hams	.....	1.00	.50
273.—Best Butter, 2 to 4 pounds	.....	1.00	.50
274.—Best Lard, 2 pounds	.....	.50	.25
275.—Best Doughnuts	.....	1.00	.50
276.—Best Honey, in comb	.....	1.00	.50
277.—Best Honey, strained	.....	.50	.25
278.—Best display of dried fruit, not less than five varieties, two to four pounds each	.....	1.00	.50
279.—Taffy, one pound	.....	.50	.25
280.—Fudge, one pound	.....	.50	.25
281.—Peanut Brittle, one pound	.....	.25	.10
282.—Fondant, or French Candy	.....	.50	.25
283.—Seafom, one pound	.....	.50	.25
BY GIRLS UNDER 15 YEARS OF AGE.			
284.—Best Loaf of Bread	.....	\$1.00	\$.50
285.—Best Rolls	.....	1.00	.50
286.—Cake, any kind	.....	1.00	.50
287.—Jellies, any variety	.....	1.00	.50

## SCHOOL CHILDREN'S CONTEST

All exhibits must be the unaided efforts of the pupil. Each article must bear the following information in the upper right hand corner:—Name of pupil, age of pupil, school attended, grade—and must be certified to by the pupil's teacher and the pupil. The following form of certificates may be used:

I certify that this article is the unaided effort of \_\_\_\_\_ Teacher

288.—Best Specimen of Penmanship by boy from Country School Diploma.	Pupil	
289.—Best Specimen of Penmanship by boy from City School Diploma.	Pupil	
290.—Best Specimen of Penmanship by girl of City school—Diploma.	Pupil	
291.—Best Specimen of Penmanship by girl of country school—Diploma.	Pupil	
292.—Sweep-stake—Best specimen of penmanship by boy or girl open only to winners of premium Nos. 288-289-290-291—Fountain Pen.	Pupil	
293.—Best map of Chester County, including County outlines, Township outlines, rivers and creeks, towns, public highways, churches and school houses,—map must be not less than 22x30 inches.	Pupil	
1st. Premium \$1.50	2nd. Premium \$1.00	3rd. Premium Ribbon.

## TUESDAY OCT. 17TH

(OPENING DAY) EDUCATIONAL DAY

All White Children and Teachers of the Chester County Schools will Be

### ADMITTED FREE

Admission may be by the regular school ticket to be secured from the Chairman of the Trustees of your school district or by using the coupon below. No excuse of loss or leaving ticket at home will be accepted and no ticket or coupon will be accepted unless IT IS SIGNED BY THE PUPIL'S TEACHER or TRUSTEE of the school District in WHICH THE pupil resides.

COUPON. ADMIT ONE

PUPIL CHESTER COUNTY SCHOOLS

Chester County Fair 1916

Good Only On Educational Day, Tuesday, Oct. 17, 1916.

This ticket will not be accepted unless it is signed by the pupil's teacher or the trustee of the school district in which the pupil attends.

TRUSTEE TEACHER

See the Premium offered in the School Children Contest.

## CANNING DEPARTMENT

Miss Jo Yarbrough, Supt. Miss Virgie Mayfield, Asst. Supt. GIRLS CANNING CLUB.

Class A.—Two girls having highest scores on total scale of points, given short course by Winthrop College. Class B.—Best single exhibit. First prize—Canning outfit. Second prize—Scales.

Class C.—Best history year's work. First prize—Year's subscription to Country Gentleman. Class D.—Club pin given to every girl handing in report. Class E.—Prettiest single jar of fruit. First prize—Club pennant. Second prize—Box of club stationery. Third prize—Ribbon.

Class F.—Best exhibit of canned goods in tin cans. First prize—100 tin cans. Second prize—Scales. Third prize—Ribbon.

Class G.—Best exhibit of jelly (4 or more jars) First prize—\$1.00. Second prize—.50. Third prize—Ribbon.

Class H.—Best exhibit of preserves (4 or more jars) First prize—\$1.00. Second prize—.50. Third prize—Ribbon.

Class I.—Best exhibit of pickles (4 or more jars) First prize—\$1.00. Second prize—.50. Third prize—Ribbon.

## HOME DEMONSTRATION DEPARTMENT

Best Exhibit: First premium—Handsome framed picture. BREAD CLUB.

Class A.—Best club display First prize—Pennant. Class B.—Best loaf Bread. First prize—\$1.00. Second prize—.50. Third prize—Ribbon.

Class C.—Best Sweet Milk Biscuit. First prize—\$1.00. Second prize—.50. Third prize—Ribbon.

Class D.—Best sour milk Biscuit. First prize—\$1.00. Second prize—.50. Third prize—Ribbon.

Class E.—Best receipt book. First prize—Year subscription to County paper. Second prize—Ribbon.

## WE PAY POSTAGE

One way on your LAUNDRY amounting to 50c and up. Just figure out the amount and enclose stamps for laundering clothes and we will launder and return POST-PAID IMMEDIATELY.

We mail our packages in nice, stiff paste board boxes, so you will receive your work fresh and in good order. Try this method. No matter where you live you can always have your laundry delivered at your door.

JUST ENCLOSE STAMPS AND ADDRESS.

Farthing Steam Laundry CHESTER, S. C.

## Ground Limestone

Guaranteed 90 per cent. Calcium Carbonate

Car load lots in bulk, \$1.00 per ton. Car load lots in second-hand burlap bags \$2.00 per ton. Car load lots in bags furnished by customer, \$1.25 per ton.

Special low freight rates on car load lots on all leading railroads in Virginia and adjoining states; 100 miles 60c per ton; 200 miles \$1.00 per ton.

Freight rate to Chester, S. C. \$2.25. Write for rates and other information.

W. F. CULBERT MARION, Va.

## For Your Smart Fall & Winter Foot Wear

Go to The Chester Shoe Store where they measure your foot and assure you a perfect fit.

We have them for all of the family. Men Ladies and Children. Give us a call and we are sure of your continued patronage.

Our repair department is fitted up with the latest improved Machinery and skilled workmanship guaranteed; when in need of repairing call 249 and boy will call for shoes

The Chester Shoe Store N. A. PEAY, Prop.

BUY IT IN CHESTER

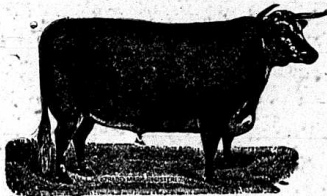


MADE IN CHESTER

IT PAYS TO USE

# Swift Fertilizer

Ask Those who have used it for years.



Manufactured by  
Swift & Company Fertilizer Works,  
Chester, S. C.

SOLD BY  
**The S. M. Jones Company**

CHESTER, S. C.  
PATRONIZE HOME INDUSTRIES

## Catawba Steam Bakery

Wholesale and Retail

F. A. Feuchtenberger, Prop.

Bread, Cakes, Pies and all kinds of Pastry.

The Japanese do many things well, but in a way that is distinctively their own, and this is true of baking as of other things. But the Japanese women could not produce

The bread-making methods of the old Romans may have been satisfactory to the people of their day, but such methods would not suit the fastidious taste of the people of the present time.

### Pies and Cakes

### Our Bread

that would suit the tastes of the people of this community as ours do. They are considered essential features of appetizing lunches or dinners in the majority of homes in this town.

does satisfy the people of this community because it is wholesome, is scientifically made in a sanitary bakery, and is everything that the best bread should be. It has the desired home flavor.

Quality and cleanliness are the twin mottoes of this bakery at all times.

## DREAMLAND THEATRE

CHESTER, S. C.

J. B. PENNINGTON, MANAGER.

### PRESENTING

A daily program of high class motion picture plays.

Pictures furnished by America's largest producers,

such as:

TRIANGLE V. L. S. E. PARAMOUNT  
METRO BLUEBIRD  
FOX

Presenting such well known stars as:

MARY PICKFORD HENRY B. WATHALL  
MARGUERITE CLARK J. WARREN KERRIGAN  
HAROLD LOCKWOOD EDNA MAYO  
FRANCIS X. BUSHMAN MARY FULLER  
WM. S. HART BILLIE BURKE

And Many Others.

We appreciate your patronage.

Always a good show—Often a great show.

Open daily 2 to 11 P. M.

BUY IT IN CHESTER

## DEPARTMENT E.

### POULTRY

W. H. McNairy, Supt. S. E. Colvin, Asst. Supt.  
H. S. Adams, Secretary.

Entry Fee 25 Cents Each Bird. Pans \$1.00.

The Right is Reserved, Through the Directors of This Department, to Accept or Reject Any Exhibit.

READ CAREFULLY EACH RULE TO AVOID MISTAKES.

This exhibition will be held under the rules of the American Poultry Association and the Chester Poultry Association.

1. Shipping tags and leg bands will be sent for each entry. Each tag must have the sender's name and address legibly written thereon and name of express company for the return journey.

2. All birds for exhibition must be received at the Fair grounds not later than midnight, Monday, Oct. 16, 1916. Arrangements for the caring and cooping of birds will be ready Saturday, Oct. 14, 1916. Birds unavoidably delayed in transit may be admitted at the discretion of the superintendent. Judging of the specimens will start promptly at 9 a. m. Wednesday, Oct. 18th and the early cooping of entries will be to their advantage.

3. Birds should be delivered or sent by prepaid express to W. H. McNairy, Supt. Poultry Show, Fair Grounds, Chester, S. C. Exhibits will not be accepted unless charges are prepaid. All birds entered at the risk of the owners, and the Association will not be responsible for loss or damage by fire or otherwise, but will exercise all reasonable vigilance in the care of exhibits.

4. Shipping coops must be marked with tags furnished by the secretary, showing breed, sex and number of birds contained therein, also, address of exhibitor, to insure prompt return at the close of the show.

5. All birds must be banded exclusively by the Association leg bands which are sent the exhibitor with the shipping tags. These bands are furnished without cost to the exhibitor. Any other bands on the specimens when received at the show room will be removed before the birds are put in the exhibition coops.

6. The term cock, hen, cockerel, and pullet are thus defined: cock and hen, birds one year old and over, cockerel and pullet, birds under one year of age.

7. No names or decorations, not provided by the Association, will be allowed on the coops until the premiums have been awarded. Names of the owners may be put on the coops after premiums are awarded.

8. No bird shall be removed from the show until the close of the same without the written consent of the Secretary.

9. Protest can be made in writing up to Thursday noon upon payment of \$5.00, and the money will be returned if protest is allowed.

10. The Association will be pleased to undertake the sale of birds for exhibitors, free of charge. To facilitate and assist the project the selling price must be stated on the entry blank. All sales must be reported to the Secretary's office as soon as made.

### PRIZES AND CLASSIFICATIONS.

#### 1—SINGLE CLASSES

1st.	2nd.	3rd.	4th.
\$1.50	.50	.50	Ribbon
8 or more Entries.			
1st.	2nd.	3rd.	4th.
\$1.00	.50	Ribbon	Ribbon
4 or more Entries.			
1st.	2nd.	3rd.	4th.
\$1.00	.50	Ribbon	Ribbon
2 or more Entries.			

#### 2—PEN CLASSES

1st.	2nd.	3rd.	4th.
\$2.00	\$1.00	\$1.00	Ribbon
8 or more Entries.			
1st.	2nd.	3rd.	4th.
\$2.00	\$1.00	Ribbon	Ribbon
4 or more Entries.			
1st.	2nd.	3rd.	4th.
\$2.00	Ribbon	Ribbon	Ribbon

3. All premiums general and special are open to the competition of the world, except County Specials, as herein stated.

4. Premiums paid as soon as judging is complete providing there be no protest.

## ENTRIES

1. Birds in single classes cannot compete for breeding prizes, nor breeding pens in single classes.

2. An entry fee of twenty-five cents will be charged for each single bird, whether entered for premium or sale; pens, one dollar.

3. No specimens will be received for exhibition except those which have been entered with the Secretary, and on which the entry fee and express charges have been paid.

4. Entries will close Monday, Oct. 16, at midnight, and to compete, your letter must bear the postmark not later than this date and time. To insure accommodations, we would advise you sending in your entries at once.

5. Each specimen competing must be entered in the name of the actual owner.

6. Coops will be furnished for birds entered for display only at fifty cents a specimen.

## AWARDIG PRIZES

1. The premiums shall be designated by handsome satin ribbons printed in gold. First premium, blue; second premium, red; third premium, yellow; fourth premium, white. Ribbons will be delivered to exhibitors, but will not be placed on the coops, except at their request. Premium cards, same color as ribbons, will be placed upon the coops as soon as the awards are made.

2. The Revised American Standard of Perfection will be the guide of the judges in rendering the awards on all standard varieties, and premiums will not be awarded unless specimen is worthy of prize.

3. No judge shall be a competitor in the class where his decision is to be given. The report of the judge shall be in writing with indelible pencil, upon blanks furnished by the Secretary. Immediately after the awards have been made a card will be placed on the winning coop, where it must remain until after the show.

Rules and conditions under which Display Specials offered by this Association will be awarded—

1. To compete for \$5.00 display special an exhibitor must have at least the following entries in one variety. One each in the—cock, hen, cockerel, pullet and pen-classes.

2. There must be at least two displays entered in a variety for awarding of premium offered.

3. In the single classes a first counts 6, second, 4, third 3, fourth 2, and fifth 1; pens count double; these values to be multiplied by the number of entries in each class of the variety, that is with five cocks in a class, the winner of first place is credited with 5 x 6 or 30 points.

### SPECIAL PRIZES.

Silver Loving Cup valued at \$20.00 for the best Rhode Island Red in the show, all varieties competing.

Silver Loving Cup, valued at \$20.00 for the best Rock in the show, all varieties competing.

Silver Loving Cup, valued at \$20.00 for the best Leghorn in show, all varieties competing.

Silver Loving Cup, valued at \$20.00 for the best Wyandotte in the show, all varieties competing.

Silver Loving Cup, valued at \$20.00 for the best Orpington in show, all varieties competing.

## The Hot Hustler Racket

We invite you to make our store your headquarters. Bring your wraps and leave them in our care. It will be a pleasure for us to do anything we can for you. We are always at your service. We will try to make you feel at home.

The Red Front in the Valley

# THE Hot Hustler Racket

D. E. ESTES, Manager.

Keen Kutter Tools Majestic Ranges

## Fair Visitors

Make Our Store Your Headquarters

We want to help make your stay a Pleasant One.

Winchester and U. M. C. Shells, Winchester, Fox etc. Guns, Keen Kutter Tools and Cutlery, Bicycles, Flash lights—Safety Razors—all makes—Thermos Bottles—Automobile tires—Hunting Clothes, Leggings—Lanterns, Yale Locks—Lard Cans, Food Choppers, Milk churns—all kinds—knives and Forks—Spoons—Coal and Wood Heaters, Oil Stoves, Oil Heaters.

Cook Stoves and Ranges—wear-ever Aluminum ware, Enamel ware—Tin ware—Japalac—Auto—Paints, Ocedar mops and Polish—Bronze and Black Grates, Boy Wagons, Velocipedes—all grades—Roofing, Keen Kutter Shovels, Keen Kutter Axes, Picks, Mat-locks—Rubber Hose, Bicycle tires, Floor Oil—Machine Oil, Cartridges—Standard—Masks—

200 Sample Padlocks at Special Prices

100 Sample Carving Knives at Special Prices

COME TO SEE US

## Murphy Hardware Co.

The Pioneers in the Valley

Sporting Goods Household Goods

## New Fall and Winter Goods Are On Display at Kluttz Department Store

FOR LADIES

FOR MEN

### NEW FALL—

High Boots and Shoes  
Wool, Silk and Cotton  
Dress Goods  
Newest Shirtwaists  
Rugs and Carpets  
Blankets  
Coats and Coat Suits  
Sweaters  
"Royal Society" Crochet  
Thread

### NEW FALL—

"Emery" Shirts  
Shoes  
"Dutchess" Trousers  
Hats, Caps  
"Wright's" Underwear  
Trunks  
"Victrolas"  
"Style-Plus" Clothing  
Neckties

For School Boys and Girls

KLUTTZ has New Fall School Shoes, Pants, Clothing, Dresses, Stockings, Etc.

# KLUTTZ Department Store

"ON THE HILL"

BUY IT IN CHESTER