



The Chester Lantern 1901

The Chester Lantern

9-27-1901

The Lantern, Chester S.C.- September 27, 1901

J T. Bigham

Follow this and additional works at: <https://digitalcommons.winthrop.edu/chesterlantern1901>



Part of the [Journalism Studies Commons](#), and the [Social History Commons](#)

Recommended Citation

Bigham, J T., "The Lantern, Chester S.C.- September 27, 1901" (1901). *The Chester Lantern 1901*. 70.
<https://digitalcommons.winthrop.edu/chesterlantern1901/70>

This Newspaper is brought to you for free and open access by the The Chester Lantern at Digital Commons @ Winthrop University. It has been accepted for inclusion in The Chester Lantern 1901 by an authorized administrator of Digital Commons @ Winthrop University. For more information, please contact digitalcommons@mailbox.winthrop.edu.

SUPPLEMENT TO THE LANTERN

CHESTER, FRIDAY, SEPTEMBER 27, 1901

SOUTH CAROLINA'S GREATEST COTTON MILL.

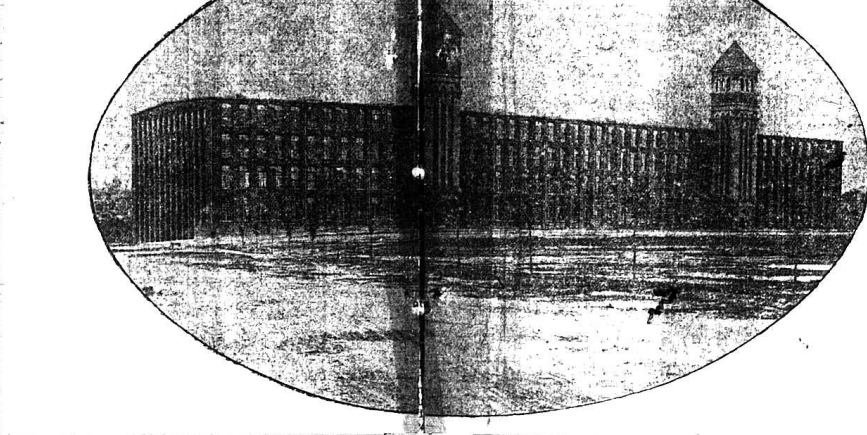
THE OLYMPIA MILL

The Largest Cotton Factory Under One Roof.

More than a Million Dollars Invested in a Great Enterprise—One Plant Operating More than 100,000 Spindles—The Opportunities Offered Unskilled and Untrained Help.

MOST MODERN AND UP-TO-DATE MILL PLANT IN THE COUNTRY.

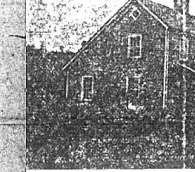
Every Convenience and Comfort Offered Mill Help—A Happy and Contented Family.



The plant is operated throughout with electricity. The expectation is to soon offer electric light to all of the operatives for their homes. The pictures indicate the neat and attractive houses that are provided for the help.

ABOUT THE MILL BUILDING.
Something of the giant mill itself: The mill building of the Olympia Mill is 30 feet 4 inches long and 18 feet 4 inches wide, and contains four floors and a basement, each story being 12 feet high. There are two towers about 24 by 33 feet and 23 feet 6 inches high, containing the staylamps and the tanks for the spritzer system. Adjoining the rear wall of the mill is the middle in a machine shop and in the rear of this is the engine and boiler room. The engine room being 18 by 50 feet, and the boiler house 10 by 40 feet in plan. In the rear of the latter is the building for the mechanical draft plant. The first floor of the building is devoted to opening, baling and weaving; the second floor to weaving, slashing, spooling and warping; the third to carding, drawing and lapsing, and the

mill to employ when its machinery is installed and in operation, more than 1,500 able-bodied operatives.



AN AVENUE OF OPERATIVE HOMES.

It has the most modern and improved machinery and, with the new and up-to-date machinery, operatives can readily earn more than they could in old plants with antiquated equipment. It has the best class and most up-to-date houses for its operatives. It is on the direct line of the Columbia Electric Street Railway, and within a convenient ride of the heart of the city. It is well equipped to give all the advantages and pleasures of the city of Columbia.

It will build a \$20,000 school building for the children of its operatives and support the school of its own account and out of its own funds. It offers the best school and church opportunities to its help. It is a mill operated, owned and managed by South Carolinians, who have the same interests, purposes and feelings as those who do the operating. It has laid money in installing the most thorough sanitary arrangements in the mill and its vicinity. It employs a mill policeman, whose services are at the call of employees without cost. The wages are full and the price work as on other classes, a small bonus being paid when the mill is doing exceptionally well.

The general plant consists of three Mcintosh & Seymour engines, each of normal rating of 1,500-horse-power, capable of developing a maximum of 3,000-horse-power, directly connected to alternators of current generators of 3,000-horse-power. The engines are of the vertical cross-compound condensing type, with cylinders 48 inches in diameter, and a stroke of 48 inches. The cylinders are also jacketed, and a reheating rectifier is placed between them.

FRIDGE OF PURE WATER.
The water supply for the mill comes from a spring-fed reservoir of some 800,000 gallons capacity, which also supplies the mill village with its drinking water. The mill is heated by two 16-foot electrically driven Sturtevant fans, blowing through horizontal ducts along the front and rear walls of the mill, as shown in the plan and section of the mill building.

HOUSE OF LIGHT.
The mill is heated by two 16-foot electrically driven Sturtevant fans, blowing through horizontal ducts along the front and rear walls of the mill, as shown in the plan and section of the mill building.

By open electricity the cost of the mill was reduced by 50 per cent out of account of the absence of heavy transmission lines through the mill, necessary for the haul of the machinery to the mill, with the belt and shafting system, 2000-horse-power of the shafting cost was saved by the use of electric or mill engines. It is by odds the most thorough that has yet been undertaken.

THE OLYMPIA COTTON MILL.
The plant is operated throughout with electricity. The expectation is to soon offer electric light to all of the operatives for their homes. The pictures indicate the neat and attractive houses that are provided for the help.

ABOUT THE MILL BUILDING.
Something of the giant mill itself: The mill building of the Olympia Mill is 30 feet 4 inches long and 18 feet 4 inches wide, and contains four floors and a basement, each story being 12 feet high.

AN AVENUE OF OPERATIVE HOMES.
It has the most modern and improved machinery and, with the new and up-to-date machinery, operatives can readily earn more than they could in old plants with antiquated equipment.

It will build a \$20,000 school building for the children of its operatives and support the school of its own account and out of its own funds. It offers the best school and church opportunities to its help.

The plant is operated throughout with electricity. The expectation is to soon offer electric light to all of the operatives for their homes. The pictures indicate the neat and attractive houses that are provided for the help.

ABOUT THE MILL BUILDING.
Something of the giant mill itself: The mill building of the Olympia Mill is 30 feet 4 inches long and 18 feet 4 inches wide, and contains four floors and a basement, each story being 12 feet high.

AN AVENUE OF OPERATIVE HOMES.
It has the most modern and improved machinery and, with the new and up-to-date machinery, operatives can readily earn more than they could in old plants with antiquated equipment.

It will build a \$20,000 school building for the children of its operatives and support the school of its own account and out of its own funds. It offers the best school and church opportunities to its help.

The plant is operated throughout with electricity. The expectation is to soon offer electric light to all of the operatives for their homes. The pictures indicate the neat and attractive houses that are provided for the help.

ABOUT THE MILL BUILDING.
Something of the giant mill itself: The mill building of the Olympia Mill is 30 feet 4 inches long and 18 feet 4 inches wide, and contains four floors and a basement, each story being 12 feet high.

AN AVENUE OF OPERATIVE HOMES.
It has the most modern and improved machinery and, with the new and up-to-date machinery, operatives can readily earn more than they could in old plants with antiquated equipment.

It will build a \$20,000 school building for the children of its operatives and support the school of its own account and out of its own funds. It offers the best school and church opportunities to its help.

The plant is operated throughout with electricity. The expectation is to soon offer electric light to all of the operatives for their homes. The pictures indicate the neat and attractive houses that are provided for the help.

ABOUT THE MILL BUILDING.
Something of the giant mill itself: The mill building of the Olympia Mill is 30 feet 4 inches long and 18 feet 4 inches wide, and contains four floors and a basement, each story being 12 feet high.

AN AVENUE OF OPERATIVE HOMES.
It has the most modern and improved machinery and, with the new and up-to-date machinery, operatives can readily earn more than they could in old plants with antiquated equipment.

It will build a \$20,000 school building for the children of its operatives and support the school of its own account and out of its own funds. It offers the best school and church opportunities to its help.

The plant is operated throughout with electricity. The expectation is to soon offer electric light to all of the operatives for their homes. The pictures indicate the neat and attractive houses that are provided for the help.

ABOUT THE MILL BUILDING.
Something of the giant mill itself: The mill building of the Olympia Mill is 30 feet 4 inches long and 18 feet 4 inches wide, and contains four floors and a basement, each story being 12 feet high.

AN AVENUE OF OPERATIVE HOMES.
It has the most modern and improved machinery and, with the new and up-to-date machinery, operatives can readily earn more than they could in old plants with antiquated equipment.

It will build a \$20,000 school building for the children of its operatives and support the school of its own account and out of its own funds. It offers the best school and church opportunities to its help.

at auction, in the Cotton hotel, morning.

Columbia Female College.
Speaking of the Columbia Female College, the State of the 22nd says:
There has been some talk lately that an effort might be made to have the college moved from Columbia. It is under the auspices of the South Carolina conference and has had an honored and useful career in Columbia. For several years it has had a steadily growing attendance and the Rev. W. W. Daniel, D. D., the president, declares that the accommodations will be taxed this year.

Dr. Daniel does not think seriously of the talk about removing the institution. He had heard that Chester, Greenwood and Anderson wanted the college, but he thinks Columbia is the place for it. On one point the agitators are party to the contention; he says that there is great need for more dormitory space. As to the campus, it is large enough. One of the finest female colleges in the world—the one at Baltimore—has its buildings right on the street, indeed the dormitories are on one side of the street and the recitation rooms on the other. There is campus enough here, he says. There has been no agitation to have the college moved. It has merely been spoken of by one or two gentlemen interested in the college.

Stop the Leaks.
We recently had a leak in our water works. We were very anxious to have it repaired, because it would likely increase our monthly water bill.

Traveling as we have recently, over two thousand miles, among the farmers of the South, we have been greatly impressed with the leaks in farm methods, and cannot help wondering why our farmers do not stop them. They certainly greatly increase the bill of expenses, or what is much the same, decrease the income.

This seems to be the most general leak upon the farm, scarcely a farmer seems to fully appreciate the value of the hay crops growing up on his farm. Grasses of many kinds are permitted to grow to waste, die and be buried up, as if it had no market value. Many of these very farmers are buying Western hay to feed on. Many of their neighbors are buying western hay to feed their sawmill steers or mules or their lively stock horses upon.

We saw one man who was buying hay at twenty-two dollars per ton, and yet pulling fodder and losing all the hay he might have made from his cornstalks. We found one man who had over six hundred tons of cornstalks, enough to make over six hundred tons of first-class hay, —but this man could not make up his mind to buy a shredder to make them into hay, although he had an engine ready to mill it. Why not stop this \$1,200 leak?

Farmers are paying high prices for bagging and ties, when they do not need either. Why not stop this leak?

Farmers are buying thousands of tons of commercial fertilizers, when good, deep plowing and rapid harrowing would do their lands permanent good and make larger crops than the fertilizers do. Why not stop this leak?

Farmers are cutting rocks and stumps at great expense and loss. They could easily remove both of these. Very many of them are still suffering their lands to wash away. Deep plowing and subsoiling would stop this leak.

Many farmers are still growing scrub cows, when the same grass would grow Shortorns and Herefords that would bring in four times the money. Why not get a Hereford or Shortorn bull to stop this leak?

Many farmers have what they call pastures, but bushes, briars, worthless weeds and rocks occupy nearly all the fields. Real good grass can hardly get hold. Why not clear out everything except the grass and have a pasture? Stop these leaks. —Southern Cultivator.

"I have been suffering from dyspepsia for the past twenty years and have been unable after trying all preparations as physicians advised to get any relief. After taking one bottle of Kodol Dyspepsia Cure I found relief and am now in better health than I have been for twenty years. I can not praise Kodol Dyspepsia Cure too highly." Thus writes Mrs. C. W. Roberts North Creek, Ark. Pryor-McKee Drug Co.

The Matter of Text Books.
Now that the time for buying school books is at hand, several persons have talked to us about the matter, and the heavy expense to which they have been put in consequence of the action of the state board in the many and wholesale changes made. They are told the new books must be put in on the teacher would get no pay from the public funds. This may be law but it is not justice and is therefore wrong. Practically nothing is allowed in exchange for the books formerly in use, and it means an expense of about five dollars to every family in the state having children to educate, and for new books which are not as good as the books formerly in use.

Come Back to States' Rights.
In an address recently delivered in Kansas City President Ingalls, of the Big Four Railroad system, said: "The doctrine of States' rights is not a popular one, but I sincerely believe that we must come back to it, or we would preserve our Government."

For a quarter of a century we have been drifting towards a strong Government at Washington. Our people rush from State Courts to United States Courts. Under one pretext or another the right of the State is broken down, and the cry is always for a strong Government, forgetting that the more you condense and crowd into Washington the more danger of corruption and wrong. Change this and keep as much at home as you can, so you can watch what is done. Then indeed shall we transmit to our children this fair heritage that we received from our fathers.

Chamberlain's Cough Remedy a Great Favorite.

The soothing and healing properties of this remedy, its pleasant taste and prompt and permanent cures have made it a great favorite with people everywhere. It is especially prized by mothers of small children for colds, croup and whooping cough, as it always affords relief, and as it contains no opium or other harmful drugs, it may be given as confidently to a baby as to an adult. For sale by all druggists.

All Five from the South.
The first five cadets in the order of merit in the fourth class at West Point for the year ending in June last, according to the official register just published, were: Chas. R. Peltus, of Mississippi; Robert P. Howell, of North Carolina; Robt. M. Campbell, of Maryland; Henry H. Roberts, of Mississippi; and Robt. F. Richardson, Jr., of South Carolina. The class contains 154 members and the distinction won by the five boys entitles them to be placed on the Army Register. —News and Courier.

Cured of Chronic Diarrhoea After 20 Years of Suffering.
I suffered for 20 years with diarrhoea and thought I was past being cured," says John S. Holloway, of French Camp, Miss. "I had spent so much time and money and suffered so much that I had given up all hopes of recovery. I was so feeble from the effects of diarrhoea that I could do no kind of labor, could not even travel, but by accident I was permitted to find a bottle of Chamberlain's Colic, Cholera and Diarrhoea Remedy, and after taking several bottles I am entirely cured of that trouble. I am so pleased with the result that I am anxious that it be in reach of all who suffer as I have." For sale by all druggists.

When you have a pleasant physic try the new Remedy, Chamberlain's Stomach and Liver Tablets. They are easy to take and pleasant in effect. Price, 25 cents. Samples free at all Druggists.

Cuts and Bruises Quickly Cured
Chamberlain's Pain Balm applied to a cut, bruise, burn, scald or like injury will instantly allay the pain and will heal the parts in less time than any other treatment. Unless the injury is very severe it will not leave a scar. Pain Balm also cures rheumatism, sprains, swellings and lameness. For sale by all druggists.

Have you a sense of fullness in the region of your stomach after eating? If so you will be benefited by using Chamberlain's Stomach and Liver Tablets. They also cure belching and sour stomach. They regulate the bowels too. Price, 25 cents. Sold by all Druggists.

Chamberlain's Cough Remedy a Great Favorite.
The soothing and healing properties of this remedy, its pleasant taste and prompt and permanent cures have made it a great favorite with people everywhere. It is especially prized by mothers of small children for colds, croup and whooping cough, as it always affords relief, and as it contains no opium or other harmful drugs, it may be given as confidently to a baby as to an adult. For sale by all druggists.

All Five from the South.
The first five cadets in the order of merit in the fourth class at West Point for the year ending in June last, according to the official register just published, were: Chas. R. Peltus, of Mississippi; Robert P. Howell, of North Carolina; Robt. M. Campbell, of Maryland; Henry H. Roberts, of Mississippi; and Robt. F. Richardson, Jr., of South Carolina. The class contains 154 members and the distinction won by the five boys entitles them to be placed on the Army Register. —News and Courier.

Cured of Chronic Diarrhoea After 20 Years of Suffering.
I suffered for 20 years with diarrhoea and thought I was past being cured," says John S. Holloway, of French Camp, Miss. "I had spent so much time and money and suffered so much that I had given up all hopes of recovery. I was so feeble from the effects of diarrhoea that I could do no kind of labor, could not even travel, but by accident I was permitted to find a bottle of Chamberlain's Colic, Cholera and Diarrhoea Remedy, and after taking several bottles I am entirely cured of that trouble. I am so pleased with the result that I am anxious that it be in reach of all who suffer as I have." For sale by all druggists.

Building Lots for Sale.
The magnificent property of Judge Brawley, situated between York and Saluda streets, has been surveyed and platted into 22 desirable building lots, which are now for sale.
No Auction! No Chance!
Every lot is a prize. The price is fixed. There is no cutting of prices and each purchaser can select the lot wanted and get value received for every dollar invested.
Those desiring to buy for the purpose of building, can see the plat of the lots by calling upon the undersigned.
CALDWELL & GASTON,
Attorneys.

Erskine College.
The sixty-third year begins September 18th, 1901. A well established reputation for doing thorough work. Classical and Scientific Courses. Large and well-appointed dormitories for both young men and young ladies. Good, Moral and Religious Influences. Expenses as low as they can be made.
Catalogue sent on application.
F. Y. PRESSLY, Pres.,
Due West, S. C.

Farmers' Mutual Fire Ins. Association OF CHESTER COUNTY.
Consult the Agent of the Farmers Mutual Ins. Association before you insure.
Amount Ins. in force \$212,000.00
Amt. paid out during 1900 2,567.04
Which was 1 1/2 per cent.
Amt. paid out during 1899 557.16
Which was 1/2 per cent.
Amt. paid out during 1898 1,015.00
Which was eleven-twentieths of 1 per cent.
Therefore for three years the average per cent. would be 71 1/3 of 1 per cent. or less than 3-4 of 1 per cent.
S. E. WYLIE,
Agent and Treasurer.
W. Y. WHITE, Pres.

W. W. COOGLER & CO.,
LUMBER
Sash, Doors, and Blinds.
ALL KINDS OF...
BUILDING MATERIALS.
Yard Corner Valley and Gadsden Sts.
Come to The Lantern Office for Liens, Mortgages Bills of Sale, Real Estate Deeds, Real Estate Mortgage, and every other kind of blanks.

Kodol
Dyspepsia Cure
Digests what you eat.
It artificially digests the food and aids Nature in strengthening and reconstructing the exhausted digestive organs. It is the latest discovered agent and tonic. No other preparation can approach it in efficiency. It instantly and permanently cures Dyspepsia, Indigestion, Heartburn, Flatulence, Sour Stomach, Nausea, Sick Headache, Gastric Cramps and all other results of imperfect digestion. Brochure and Sample free on application. Write for it. Book all about dyspepsia and its cure free.
Prepared by E. C. DeWITT & CO., Chicago.

VESTIBULE WEST INDIA LIMITED TRAINS DOUBLE DAILY SERVICE
In Effect May 26, 1901.

	Daily	Daily
	May 26	May 27
NORTHBOUND		
Lv Savannah, Ga.	11:45 pm	2:10 pm
Colombia, S. C.	7:45 am	7:15 pm
Camden	5:57 am	9:05 am
Portsmouth, N. H.	7:00 am	10:15 am
Lv Calhoun Falls	1:00 pm	4:11 pm
Greenwood	2:01 pm	5:01 pm
Clinton	2:58 pm	5:58 pm
Carlisle	3:55 pm	6:55 pm
Richmond	4:52 pm	7:52 pm
Hamlet	5:50 pm	8:50 pm
Portsmouth, N. H.	6:47 pm	9:47 pm
Lv Richmond	5:50 pm	9:00 pm
Washington	7:00 pm	10:10 pm
New York	9:50 am	4:00 pm
Portsmouth, N. H.	8:50 pm	7:00 am

Lancaster and Chester Railway.
Time Table in Effect Sept. 16, 1900.

	EX. No. 16	EX. No. 17
	W. Y.	S. C.
WESTWARD		
Lv Lancaster	6:30 am	9:00 pm
Port Law	7:12 am	9:42 pm
Braswell	7:52 am	10:22 pm
Lv Chester	7:52 am	10:22 pm
EASTWARD		
Lv Chester	8:00 am	10:30 pm
Richburg	10:20 am	12:50 pm
Port Law	11:00 am	1:30 pm
Braswell	11:40 am	2:10 pm
Lv Lancaster	11:40 am	2:10 pm

Carolina and North-Western R'y.
Time Card.
Effective September 15, 1901.
DAILY EXCEPT SUNDAY.

	Pass.	Mixed
	No. 16	No. 17
Northward		
Lv Lancaster	6:30 am	9:00 am
Port Law	7:12 am	9:42 am
Braswell	7:52 am	10:22 am
Lv Newton	10:00 am	12:30 pm
Lv Hickory	11:00 am	1:30 pm
Arrive Lenoir	12:00 pm	1:00 pm
Southward		
Lv Lenoir	2:45 pm	9:00 am
Lv Hickory	3:45 pm	10:00 am
Lv Newton	4:45 pm	11:00 am
Lv Braswell	5:45 pm	12:00 pm
Lv Port Law	6:45 pm	1:00 pm
Arrive Lancaster	7:45 pm	2:00 pm

Pryor-McKee Drug Co.
DRUGGISTS.
Prescriptions a Specialty.
W. H. NEWBOLD,
Attorney at Law,
Main St., Opposite Court House,
CHESTER, S. C.

Mr White
has returned from the Northern Markets.
New Goods
ARRIVING DAILY.
Stylish Up-to-Date Prices Right
THE OLD RELIABLE
WYLIE & CO

FRESH, SOUTHERN RAISED Seed Rye AND Barley
LINDSAY & SON,
"IN THE VALLEY."

All Kinds of Job Printing
At the LANTERN OFFICE

F. M. Nail's
VALLEY RACKET STORE
JUST RECEIVED
A handsome line of China and Crockery Ware. Call and inspect our stock before buying elsewhere. The prices will suit you.
F. M. NAIL,
VALLEY RACKET.

S. M. JONES & CO.
NOW IS THE TIME FOR IMPROVING YOUR LAND AND OUR AIM IS TO SELL YOU The Best Article for the Money.
We have just received two hundred LYNCHBURG STEEL BEAM PLOWS which we can show you testimonials proving that this plow is the best. These plows are made of first-class material and the workmanship is unsurpassed. All wearing parts are chilled, special pains are taken with the moleboards and on account of the shape of the moleboards they will scour in sticky soil where many others fail. If the purchaser is not pleased with the glow after TWO DAYS' TRIAL he may return it to us and money will be refunded. We can furnish supplementary moleboard for the Lynchburg plow. The moleboards are bolted or over the other moleboards, thus enabling you to take a small plow and by the use of these moleboards throw up more dirt than you can with large four-horse plows. They are indispensable for ditching and terracing.
8,500 Bushels Home Raised and Texas Red Rust Proof Oats.
100 bushels Choice Rye. 100 bushels Home Raised Barley
We have a special bargain to offer you in Second-Hand PIECED BAGGING. It will pay you to see us before buying.
S. M. JONES & CO.