



1-26-1917

The Chester News January 26, 1917

W. W. Pegram

Stewart L. Cassels

Follow this and additional works at: <https://digitalcommons.winthrop.edu/chesternews1917>



Part of the [Journalism Studies Commons](#), and the [Social History Commons](#)

Recommended Citation

Pegram, W. W. and Cassels, Stewart L., "The Chester News January 26, 1917" (1917). *Chester News 1917*. 8.

<https://digitalcommons.winthrop.edu/chesternews1917/8>

This Newspaper is brought to you for free and open access by the The Chester News at Digital Commons @ Winthrop University. It has been accepted for inclusion in Chester News 1917 by an authorized administrator of Digital Commons @ Winthrop University. For more information, please contact digitalcommons@mailbox.winthrop.edu.

Whatever the reason may have been for the failure of our steel-makers to meet the bids for armor-piercing projectiles presented by an English firm, the fact that under the law the Navy Department was compelled to award the contract to a foreigner is emphatically to the discredit of American industry.

The difference between American and English prices of \$775 and \$1513 for sixteen-inch shells and \$500 and \$356 for fourteen-inch shells cannot be accounted for on any theory of labor cost. When it has suited the purposes of our manufacturers to meet European competition in their own field, the cost has never stood in the way.

If high wages and inefficiency were not expressed in the exorbitant prices quoted to the Government it must be that swollen profits on war orders made the American bidders reluctant to accept new business. For this assumption we find support in the fact that Bethlehem Steel, which sold for 29 1/2 in 1914, before the war, commanded 600 last year and is now quoted above 470 a share.

An institution so busy and so rich as this may be able to excuse itself for lack of intelligent and patriotic interest in the defensive measures adopted at Washington, but it cannot in decency complain when the Government undertakes to supply its needs abroad or by productive operations on its own account. Another outstanding truth of which every citizen must take notice is that those who clamor most for public favor drive the hardest bargains when they come to deal with the people.

DELIVERY COST ARE HIGH.

Big Factor in Prices Paid by the Consumers, Uncle Sam Finds in Preliminary Survey.

Uncle Sam has discovered, through a preliminary survey of the subject of city cartage or local distributive of commodities, that the cost of delivery is a factor of considerable magnitude in the cost of living. The results of the first investigation, which was made in the city of Washington, were such, in the opinion of Secretary of Commerce Redfield, to justify the census bureau in selecting some other representative cities and detailing experts for the purpose of making a more comprehensive study of the subject of delivery cost in relation to the prices of commodities.

For the four selected classes of merchandise covered by the preliminary survey—ice, coal and wood, milk, and department store merchandise—representing total gross sales of about \$6,000,000, the cost of delivery alone amounted to nearly \$500,000, or about 8 per cent according to the figures compiled. It is the secretary's belief that in this single phase of cost great economies are possible; and he also believes that the survey of the selected cities—revealing, as it doubtless will, the very considerable proportion which the cost of cartage contributes to retail prices—will focus the attention of consumers upon the great saving to be effected by eliminating duplication and thus be of distinct aid in reducing the cost of living.

SALESMAN WANTED—To sell lubricating oil, grease, specialties and paint. Part or whole time. Commission basis until ability is established. Permanent position and wide field when qualified if desired. Man with rig preferred. RIVERSIDE REFINING COMPANY, Cleveland, Ohio.

IF YOU are troubled with dandruff, itching scalp, and your hair coming out, we ask you to try

HAIR TONIC on our guarantee that it will give you relief and satisfaction or money refunded. Sold only by us, 50c. and \$1.00

Meritol
ADAP
TRADE MARK
Sheilder Drug Co., Chester, S. C.

LOANS NEGOTIATED ON FARM LANDS.

Wanted you to know that we are Mortgage Company making loans in South Carolina on improved farm lands in amounts of \$500 and over, on 6 year terms.

On loans of less than \$1,000 the interest rate is 7 per cent; and amounts of \$1,000 and over 6 per cent.

We ask no money in advance for anything, and charge no inspector's fees. If you want to get a loan handled quickly, write or see us.

CHESTER REALTY & INVESTMENT CO.
M. C. FUDGE,
Loan Correspondent,
Ft. Hill, S. C.

CASTORIA

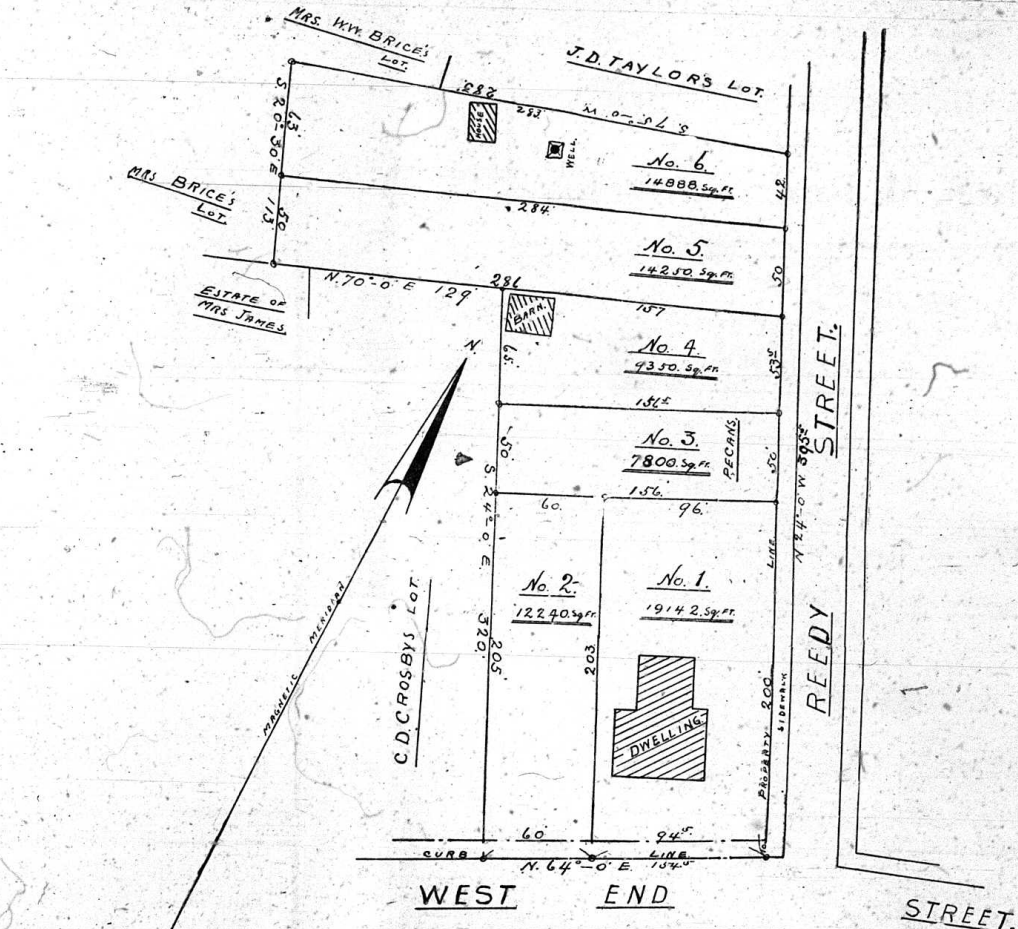
For Infants and Children
In Use For Over 30 Years
Always bears
Signature of Dr. J. C. Ayer

AUCTION SALE

THE A. M. AIKEN PROPERTY ON WEST END

Has been subdivided into six lots, including the dwelling, and will be offered at Public Auction to the highest Bidder.
TUESDAY, FEB. 6, 1917, At 3:30 O'clock P. M.

Sale on the grounds, rain or shine. Remember, this is among the prettiest property in Chester. Lot No. 1, two-story, ten-room dwelling; lot No. 2, fronting West End, fine garden spot on each; lot No. 3, on Reedy street, has pecan grove; \$200 worth of pecans gathered this season, yield will increase annually. Trees have been put in perfect shape by tree doctors. Strawberry bed in rear of pecan trees; lot No. 4, fine barn; lot Nos. 5 and 6, with a depth of 280 feet, one tenant house on No. 6. Alfalfa growing on both Nos. 5 and 6. For fuller information see plat below.



MAP SHOWING THE SUBDIVISION OF
A. M. Aiken's, property.
CITY OF CHESTER
SOUTH CAROLINA
JANUARY 6-1917
SCALE 50ft. = 1 INCH
James M. Cannon, C.E.

A Chance of Your Life To Get a Piece of Nice Property At Your Own Figures.
TERMS: 10 per cent day of sale; 15c per cent when papers are made; balance one, two and three years at seven per cent interest.

Sold By R. R. Hafner and Sims and Carter

Ladies especially invited. Present of \$10 to holder of lucky card, if property is all sold.

The Semi-Weekly News
Published Tuesday and Friday
at Chester, S. C.

Owners and Publishers.
W. W. PEGRAM
STEWART L. CASSELS

Subscription Rates in Advance
One Year \$1.50
Six Months75
Three Months50

Advertising Rates Made Known on
Application.

Entered at the Postoffice at Chester
S. C., as second-class matter.

FRIDAY, JANUARY 26.

We often hear people of this State speak of our "Prohibition Law." To our mind we have no prohibition law. It might be termed a "limited" prohibition law and limited prohibition is a compromise with Satan, a misnomer, a half-way measure that no true dry should consent to since the Webb-Kenyon law has been sustained by the Supreme Court. If we are to have prohibition let's have the "cherry dry" kind and cut out this "limited prohibition."

The erection of an adequate passenger station by the Seaboard Air Line Railway in Chester is something that rests with the people of Chester. If the citizens of this city really desire a new passenger station all they have to do is to go after it collectively.

The Seaboard cannot ignore the demands of the city of Chester. The amount of business done by this railroad in and out of Chester is excellent. However, if Chester is satisfied with the so-called passenger station the Seaboard has no cause to worry.

MORE MONEY THAN ROOM.

The following appeared in a recent issue of the New York Times: "The Federal treasury chests in this city have become so choked with gold that storage space may have to be arranged either in other cities or among the local banks. The vaults of the Sub-Treasury are filled to overflowing with \$519,000,000 in bars and many more millions in coin. The Assay Office has \$100,000,000, and there is a room for only about \$25,000,000 more. As J. P. Morgan & Co. expect at least this much gold to come from Canada before the end of the month, it is plain that either room must soon be found in bank vaults or the gold inflow will have to be diverted from New York."

It has always been stated that it is hard for a fellow to get out of a

"truth." It takes a cyclone to wake people proper. We never realize the benefit of fire insurance until our home or our place of business is visited by a conflagration. We seldom appreciate a loved one until it is too late. We do not appreciate good health until we lose it. And, we do not appreciate good roads until we get a touch of real bad roads. This being a fact, no doubt, the majority of the citizens of Chester county, just at this moment, are realizing the benefits to be derived from good roads; roads that are passable at all times. If the condition of our roads would remain just as at present for the period of one year doubtless the citizens of Chester county would be willing to spend a round million for roads.

The citizens of Chester county are losing money every day our roads stay in the condition they are today. All we will wake up and get out of the "rut."

THE ROCK HILL SEABOARD CONNECTION.

Many rumors regarding the proposed railway from Rock Hill to Catawba Junction to connect with the Seaboard Railway have been going on for the past several months. At times we have heard about what the engineers were doing; about the finances being already arranged, etc. Of course, this was a matter of talk—just plain street talk.

In regard to this proposed railway, President Cobb, of the Rock Hill Chamber of Commerce, has the following to say at the annual meeting of the Chamber a few days ago:

"This is a matter, Gentlemen, that has been discussed by the people of Rock Hill for the past twenty or twenty-five years. It has been brought up and discussed at nearly every meeting of our Directors and at practically every annual meeting since the organization of the Chamber of Commerce. The time has come, my friends, for action. Let's get together and procure this railroad or quit talking about it."

I shall not dwell upon this subject, as it is a topic to be brought up and discussed later in the evening. I do not state, however, that we are nearer to the point of securing this important enterprise than we have ever been before. Your Railroad Committee cannot be too highly commended for the excellent work which has been done in the last few months. This Committee has worked night and day on this important matter. It has come to a point where it cannot go forward without your assistance and co-operation, and it is hoped tonight that you will endorse the recommendations of this Committee, and I trust you will endorse them without a dissenting voice. It is my firm belief that the Seaboard connection will be a reality if you will."

NOTICE OF SHERIFF'S SALE OF PERSONAL PROPERTY.

BY VIRTUE of a Distress Warrant issued to me on January 15, 1917, by The Chester Machine and Lumber Company against the office fixtures and furniture of W. J. Simpson situated in the office on Gadsden Street in Chester, S. C., recently occupied by said W. J. Simpson, said Distress Warrant being for rent in arrears, I will sell for cash at public outcry at the office on Gadsden Street, Chester, S. C., recently occupied by said W. J. Simpson, at 11 o'clock A. M. on Monday, February 5, 1917, all the office furniture and fixtures in said office belonging to said W. J. Simpson, same consisting of, among other things, one flat top desk, one Royal Standard typewriter, one telephone, one filing cabinet, one writing desk, one Wain Adding Machine, one Alpine Safe, three chairs, one settee.

All interested will please appear at said time and place.
D. GOBER ANDERSON,
Sheriff Chester County,
Chester, S. C. January 22, 1917.
-3-.

THAW "STILL CLOUDY"

Not Yet Just Right in His Mind. Philadelphia, Pa., Jan. 25.—Harry K. Thaw—who is slowly recovering from the effects of a bullet wound, was examined today by Dr. John Wannamaker, III, a police surgeon. The examination was made in the presence of Dr. Elwood Kirby, Thaw's private physician, and at its conclusion Dr. Wannamaker stated that he had found the patient's mental condition "still cloudy" and that it was difficult to say when this "haze" would clear up. Dr. Wannamaker said that he agreed with Dr. Kirby that Thaw's loss of blood from his wounds was responsible for his present state of "mental cloudiness." Detectives are awaiting to arrest Thaw on a bench warrant issued in New York after his indictment on charges of kidnaping and assaulting Frederick Gump, Jr., a Kansas City high school boy.

Dreamland Theatre

To-Day
Kathlyn Williams
in
"REDEEMING LOVE"
Paramount Play in 5 acts.
Also
HELEN HOLMES
in
"THE LASS OF THE LUMBERLANDS"
Episode No. 8

Saturday
BESSIE BARRISCALE
in
"THE PAYMENT"
With
FAY TINKER
in
"SKIRTS"
Keystone Comedy in 2 acts.

Monday
LUCILLE LEE STEWART
in
"HIS WIFE'S GOOD NAME"
Greater Vitagraph Play in 5 acts.

NOTICE OF SALE Of Valuable Horses, Mules and Farming Implements.

Having changed my plans I will sell at Public Auction, to the highest bidder for cash, before the Court House Door in Chester, S. C., on Saturday, February 3rd, 1917, next, at 11 o'clock A. M., 6 good mules; 1 good brood mare; 1 good saddle horse; 1 good milk cow, soon to freshen; 3 two-horse wagons; 1 buggy and harness; 1 Wood mower; 1 McCormick Rake; 1 Deering binder; 1 Deere stalk cutter; and sundry other useful farming tools and implements.

Attend this sale if you want anything of this kind at your own price.

W. E. CUNNINGHAM.

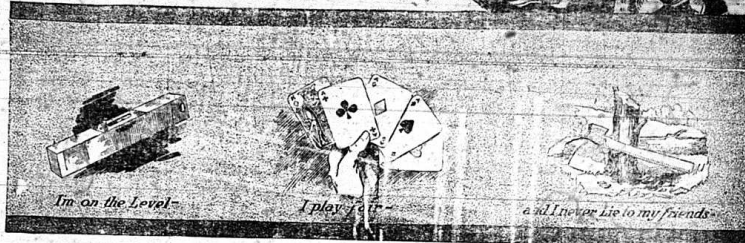
SEE OUR LINE OF BUFFETS

China Closets and Extension Tables. We can save you money if you buy from us. Coupons with all cash purchases.

Lowrance Bros.

153 Gadsden Street.
Phones Store 292 Residence 136 and 356
Undertakers and Licensed Embalmers.

A Southern Gentleman Is Popular Everywhere



I'm on the Level - I played fair - and I never lie to my friends.

Just think this over a minute.—How many friends have you? Not the fellows who borrow from you—I mean the chaps who will fight for you! Fellows who believe in you—who stick by you through thick and thin. You can count them on one hand, can't you? But listen to this.—I have several million down South here. And why? Because I've been on the level. I've played fair. I've never lied to my friends, nor cheated them, nor double-crossed them, nor held out on them. They know me by my right name—SOVEREIGN. A true gentleman of the South, born and bred of the real Southern stock. I mingle the blood of Virginia and Carolina—the best in the world—the choicest, sweetest, ripest, smoothest tobacco you ever smoked.

**You Folks of the South KNOW Good blood!
You Folks of the South KNOW Good tobacco!**

I have friends down South, and I keep them—because quality does tell. And it means a whole lot when I say:

I am guaranteed by *The American Tobacco Co.*—Duy me. If you don't like me return me to your dealer and get your money back. I have said it. A Southern gentleman is known the world over for keeping his word, and I have given you mine.

Sovereign Cigarettes
FOR THE GENTLEMAN OF THE SOUTH
"King of Them All"

Reduced Prices To Commence Saturday, JANUARY, 20th.

A chance to reduce the high cost of living. Being overstocked with a big line of high grade goods I wish to reduce the same.

- Rumford Baking Powder 23c or 2 lbs. for 45c
- Peas, 20c, 3 cans 50c
- Large Can Asparagus 35c, now 25c
- Robin Hood Asparagus Tips 22c
- Royal Scarlet Asparagus Tips 25c
- Corn per can from 10c to 13c
- Wesson Cooking Oil, pints, 27c; quart, 43c
- Large Prunes, 11c and 12 1-2 per lb
- Apricots, per lb 18c
- Raisins, per lb 10c
- Cranberries, per quart 12 1-2c
- Extra Fancy Peaches, per lb 12 1-2c
- Oat Flakes per lb. only 6c. Oat Meal per lb., 6c.
- Whole Grain Rice, 15 lbs. for \$1.00
- 25 lbs. Sugar for \$2.00
- Brown Sugar, per lb. 8c
- Palace Flour, Equal to Pillsbury, nothing better, per 100 lbs. \$4.85
- Pie Peaches, per can 10c
- Syrup Peaches, per can 18c to 25c
- Pink Salmon, per can 10c and 15c
- Robin Hood Salmon, per Can 25c
- Columbia River Salmon, per can 15c

JOSEPH WYLIE & COMPANY

SPECIAL Clean-Up Prices

On the following lines:

- Men's Winter Suits
- Boys' Winter Suits
- Men's and Boy's Overcoats
- Comforts, Furs
- Misses and Children's Coats.

Only a few things left in each of these lines. At the reduced prices they will not stay with us long.

JOSEPH WYLIE & COMPANY

Jos. A. Walker

